

Datasheet for ABIN7152965  
**anti-Flotillin 1 antibody (AA 169-251)**

## 6 Images

[Go to Product page](#)

## Overview

Quantity:	100 µg
Target:	Flotillin 1 (FLOT1)
Binding Specificity:	AA 169-251
Reactivity:	Human
Host:	Rabbit
Clonality:	Polyclonal
Conjugate:	This Flotillin 1 antibody is un-conjugated
Application:	Western Blotting (WB), ELISA, Immunohistochemistry (IHC), Immunofluorescence (IF), Immunoprecipitation (IP)

## Product Details

Immunogen:	Recombinant Human Flotillin-1 protein (169-251AA)
Isotype:	IgG
Cross-Reactivity:	Human, Mouse, Rat
Purification:	>95%, Protein G purified

## Target Details

Target:	Flotillin 1 (FLOT1)
Alternative Name:	FLOT1 ( <a href="#">FLOT1 Products</a> )
Background:	Background: May act as a scaffolding protein within caveolar membranes, functionally

## Target Details

participating in formation of caveolae or caveolae-like vesicles.

Aliases: FLOT 1 antibody, FLOT1 antibody, FLOT1\_HUMAN antibody, Flotillin-1 antibody, Flotillin1 antibody, Integral membrane component of caveolae antibody, Reggie 2 antibody

UniProt: [O75955](#)

## Application Details

Application Notes: Recommended dilution: WB:1:500-1:5000, IHC:1:20-1:200, IF:1:50-1:200, IP:1:200-1:2000,

Restrictions: For Research Use only

## Handling

Format: Liquid

Buffer: Preservative: 0.03 % Proclin 300  
Constituents: 50 % Glycerol, 0.01M PBS, pH 7.4

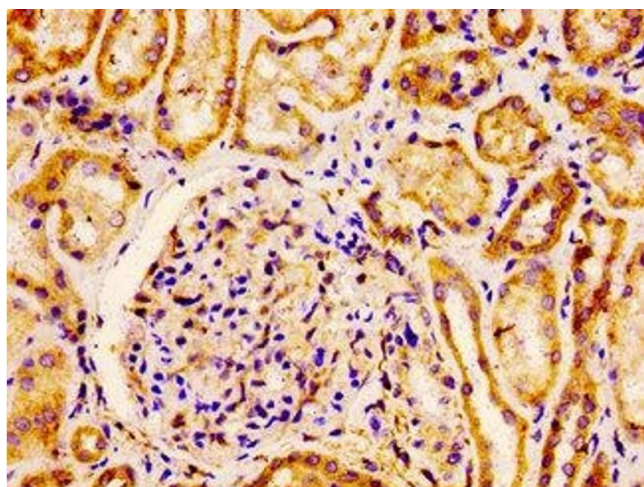
Preservative: ProClin

Precaution of Use: This product contains ProClin: a POISONOUS AND HAZARDOUS SUBSTANCE which should be handled by trained staff only.

Storage: -20 °C,-80 °C

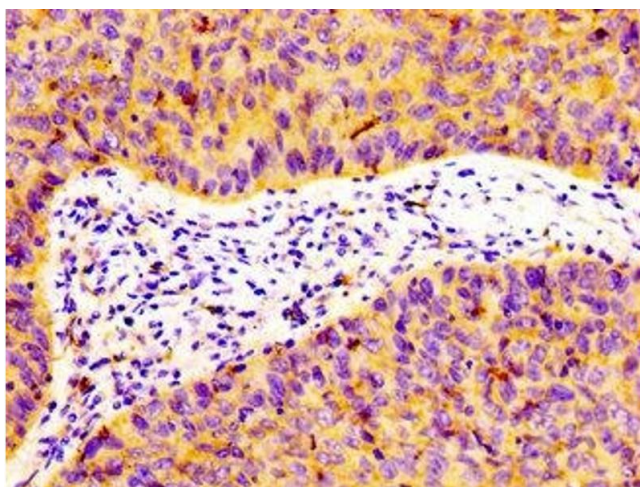
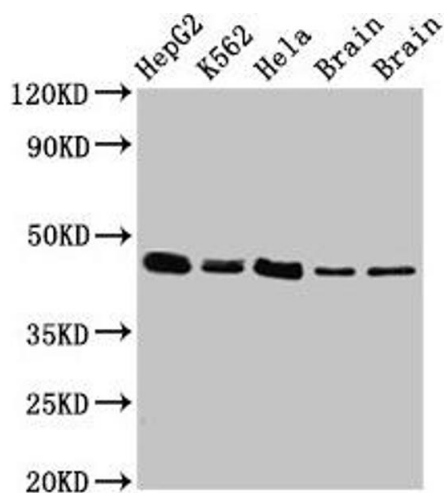
Storage Comment: Upon receipt, store at -20°C or -80°C. Avoid repeated freeze.

## Images



### Immunohistochemistry

**Image 1.** IHC image of ABIN7152965 diluted at 1:100 and staining in paraffin-embedded human kidney tissue performed on a Leica Bond™ system. After dewaxing and hydration, antigen retrieval was mediated by high pressure in a citrate buffer (pH 6.0). Section was blocked with 10% normal goat serum 30min at RT. Then primary antibody (1% BSA) was incubated at 4°C overnight. The primary is detected by a biotinylated secondary antibody and visualized using an HRP conjugated ABC system.



### Western Blotting

**Image 2.** Western Blot Positive WB detected in: HepG2 whole cell lysate, K562 whole cell lysate, HeLa whole cell lysate, Rat brain tissue, Mouse brain tissue All lanes: FLOT1 antibody at 3 µg/mL Secondary Goat polyclonal to rabbit IgG at 1/50000 dilution Predicted band size: 48, 43 kDa Observed band size: 48 kDa

### Immunohistochemistry

**Image 3.** IHC image of ABIN7152965 diluted at 1:100 and staining in paraffin-embedded human cervical cancer performed on a Leica Bond™ system. After dewaxing and hydration, antigen retrieval was mediated by high pressure in a citrate buffer (pH 6.0). Section was blocked with 10% normal goat serum 30min at RT. Then primary antibody (1% BSA) was incubated at 4°C overnight. The primary is detected by a biotinylated secondary antibody and visualized using an HRP conjugated SP system.

Please check the [product details page](#) for more images. Overall 6 images are available for ABIN7152965.