

Datasheet for ABIN7152986  
**anti-FOLR1 antibody (AA 25-234)**[Go to Product page](#)

## 2 Images

## Overview

Quantity:	100 µg
Target:	FOLR1
Binding Specificity:	AA 25-234
Reactivity:	Human
Host:	Rabbit
Clonality:	Polyclonal
Conjugate:	This FOLR1 antibody is un-conjugated
Application:	ELISA, Immunohistochemistry (IHC), Immunofluorescence (IF)

## Product Details

Immunogen:	Recombinant Human Folate receptor alpha protein (25-234AA)
Isotype:	IgG
Cross-Reactivity:	Human
Purification:	>95%, Protein G purified

## Target Details

Target:	FOLR1
Alternative Name:	FOLR1 ( <a href="#">FOLR1 Products</a> )
Background:	Background: Binds to folate and reduced folic acid derivatives and mediates delivery of 5-methyltetrahydrofolate and folate analogs into the interior of cells. Has high affinity for folate

## Target Details

and folic acid analogs at neutral pH . Exposure to slightly acidic pH after receptor endocytosis triggers a conformation change that strongly reduces its affinity for folates and mediates their release. Required for normal embryonic development and normal cell proliferation.

Aliases: adult antibody, Adult folate binding protein antibody, Adult folate-binding protein antibody, FBP antibody, Folate Binding Protein antibody, Folate Receptor 1 Adult antibody, Folate receptor 1 antibody, Folate Receptor 1 Precursor antibody, Folate receptor adult antibody, Folate receptor alpha antibody, Folate receptor antibody, FOLR antibody, FOLR1 antibody, FOLR1\_HUMAN antibody, FR alpha antibody, FR-alpha antibody, FRalpha antibody, KB cells FBP antibody, MOV18 antibody, Ovarian cancer associated antigen antibody, Ovarian tumor associated antigen antibody, Ovarian tumor associated antigen MOV18 antibody, Ovarian tumor-associated antigen MOV18 antibody

UniProt: [P15328](#)

Pathways: [Dicarboxylic Acid Transport](#)

## Application Details

Application Notes: Recommended dilution: IHC:1:500-1:1000, IF:1:200-1:500,

Restrictions: For Research Use only

## Handling

Format: Liquid

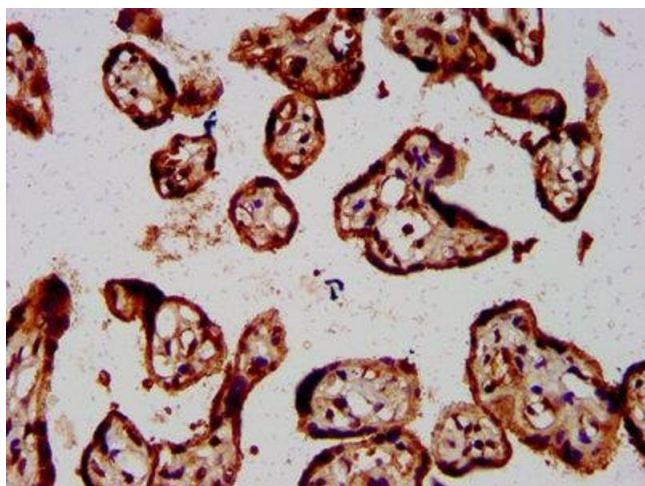
Buffer: Preservative: 0.03 % Proclin 300  
Constituents: 50 % Glycerol, 0.01M PBS, pH 7.4

Preservative: ProClin

Precaution of Use: This product contains ProClin: a POISONOUS AND HAZARDOUS SUBSTANCE which should be handled by trained staff only.

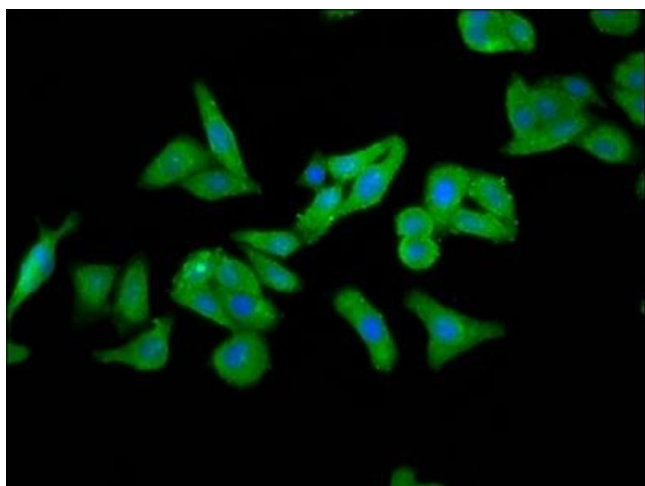
Storage: -20 °C,-80 °C

Storage Comment: Upon receipt, store at -20°C or -80°C. Avoid repeated freeze.



#### Immunohistochemistry

**Image 1.** IHC image of ABIN7152986 diluted at 1:800 and staining in paraffin-embedded human placenta tissue performed on a Leica Bond™ system. After dewaxing and hydration, antigen retrieval was mediated by high pressure in a citrate buffer (pH 6.0). Section was blocked with 10% normal goat serum 30min at RT. Then primary antibody (1% BSA) was incubated at 4°C overnight. The primary is detected by a biotinylated secondary antibody and visualized using an HRP conjugated SP system.



#### Immunofluorescence

**Image 2.** Immunofluorescence staining of HepG2 cells with ABIN7152986 at 1:266, counter-stained with DAPI. The cells were fixed in 4% formaldehyde, permeabilized using 0.2% Triton X-100 and blocked in 10% normal Goat Serum. The cells were then incubated with the antibody overnight at 4°C. The secondary antibody was Alexa Fluor 488-conjugated AffiniPure Goat Anti-Rabbit IgG(H+L).