

Datasheet for ABIN7152998  
**anti-FLCN antibody (AA 291-579)**[Go to Product page](#)

## 2 Images

## Overview

Quantity:	100 µL
Target:	FLCN
Binding Specificity:	AA 291-579
Reactivity:	Human
Host:	Rabbit
Clonality:	Polyclonal
Conjugate:	This FLCN antibody is un-conjugated
Application:	ELISA, Immunohistochemistry (IHC)

## Product Details

Immunogen:	Recombinant Human Folliculin protein (291-579AA )
Isotype:	IgG
Cross-Reactivity:	Human
Purification:	Antigen Affinity Purified

## Target Details

Target:	FLCN
Alternative Name:	FLCN ( <a href="#">FLCN Products</a> )
Target Type:	Amino Acid
Background:	Background: May be a tumor suppressor. May be involved in energy and/or nutrient sensing

## Target Details

through the AMPK and mTOR signaling pathways. May regulate phosphorylation of RPS6KB1.  
Aliases: BHD antibody, BHD skin lesion fibrofolliculoma protein antibody, Birt Hogg Dube syndrome protein antibody, Birt-Hogg-Dube syndrome protein antibody, DKFZp547A118 antibody, FLCL antibody, Flcn antibody, FLCN\_HUMAN antibody, FLJ45004 antibody, FLJ99377 antibody, Folliculin antibody, MGC17998 antibody, MGC23445 antibody

UniProt: [Q8NFG4](#)

Pathways: [Cell-Cell Junction Organization](#)

## Application Details

Application Notes: Recommended dilution: IHC:1:20-1:200,

Restrictions: For Research Use only

## Handling

Format: Liquid

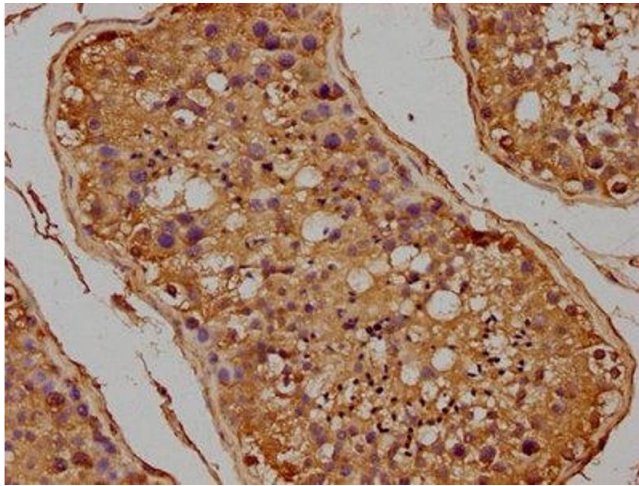
Buffer: Preservative: 0.03 % Proclin 300  
Constituents: 50 % Glycerol, 0.01M PBS, pH 7.4

Preservative: ProClin

Precaution of Use: This product contains ProClin: a POISONOUS AND HAZARDOUS SUBSTANCE which should be handled by trained staff only.

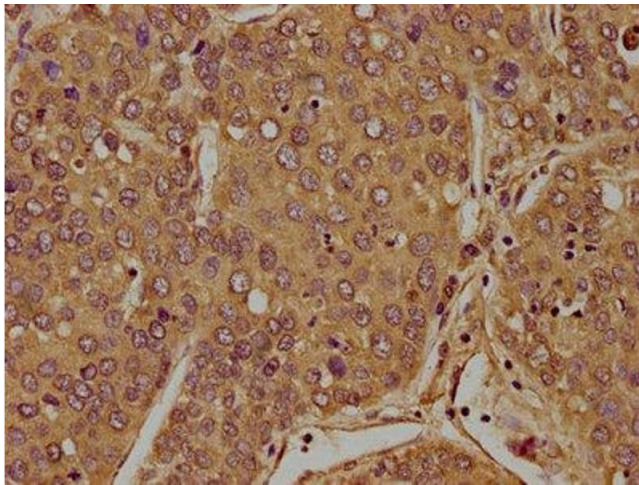
Storage: -20 °C,-80 °C

Storage Comment: Upon receipt, store at -20°C or -80°C. Avoid repeated freeze.



#### Immunohistochemistry

**Image 1.** IHC image of ABIN7152998 diluted at 1:100 and staining in paraffin-embedded human testis tissue performed on a Leica Bond™ system. After dewaxing and hydration, antigen retrieval was mediated by high pressure in a citrate buffer (pH 6.0). Section was blocked with 10% normal goat serum 30min at RT. Then primary antibody (1% BSA) was incubated at 4°C overnight. The primary is detected by a biotinylated secondary antibody and visualized using an HRP conjugated SP system.



#### Immunohistochemistry

**Image 2.** IHC image of ABIN7152998 diluted at 1:100 and staining in paraffin-embedded human liver cancer performed on a Leica Bond™ system. After dewaxing and hydration, antigen retrieval was mediated by high pressure in a citrate buffer (pH 6.0). Section was blocked with 10% normal goat serum 30min at RT. Then primary antibody (1% BSA) was incubated at 4°C overnight. The primary is detected by a biotinylated secondary antibody and visualized using an HRP conjugated SP system.