

Datasheet for ABIN7153034
anti-FOXE1 antibody (AA 184-365)



[Go to Product page](#)

2 Images

Overview

| | |
|----------------------|---|
| Quantity: | 100 µg |
| Target: | FOXE1 |
| Binding Specificity: | AA 184-365 |
| Reactivity: | Human |
| Host: | Rabbit |
| Clonality: | Polyclonal |
| Conjugate: | This FOXE1 antibody is un-conjugated |
| Application: | ELISA, Western Blotting (WB), Immunofluorescence (IF) |

Product Details

| | |
|-------------------|---|
| Immunogen: | Recombinant Human Forkhead box protein E1 protein (184-365AA) |
| Isotype: | IgG |
| Cross-Reactivity: | Human, Mouse |
| Purification: | >95%, Protein G purified |

Target Details

| | |
|-------------------|---|
| Target: | FOXE1 |
| Alternative Name: | FOXE1 (FOXE1 Products) |
| Background: | Background: Transcription factor that binds consensus sites on a variety of gene promoters and activate their transcription. Involved in proper palate formation, most probably through the |

Target Details

expression of MSX1 and TGFB3 genes which are direct targets of this transcription factor. Also implicated in thyroid gland morphogenesis. May indirectly play a role in cell growth and migration through the regulation of WNT5A expression.

Aliases: FKH L15 antibody, FKHL 15 antibody, FKHL15 antibody, Forkhead (Drosophila) like 15 antibody, Forkhead box E1 antibody, Forkhead box E2 antibody, Forkhead box protein E1 antibody, Forkhead box protein E2 antibody, Forkhead drosophila homolog like 15 antibody, Forkhead like 15 antibody, Forkhead related protein FKHL 15 antibody, Forkhead related protein FKHL15 antibody, Forkhead-related protein FKHL15 antibody, FOX E1 antibody, FOX E2 antibody, FOXE 1 antibody, FOXE 2 antibody, FOXE1 antibody, FOXE1_HUMAN antibody, FOXE2 antibody, HFKH 4 antibody, HFKH4 antibody, HFKL 5 antibody, HFKL5 antibody, HNF-3/fork head-like protein 5 antibody, Thyroid transcription factor 2 antibody, TITF 2 antibody, TITF2 antibody, TTF 2 antibody, TTF-2 antibody, TTF2 antibody

UniProt: [O00358](#)

Application Details

Application Notes: Recommended dilution: WB:1:500-1:5000, IF:1:50-1:200,

Restrictions: For Research Use only

Handling

Format: Liquid

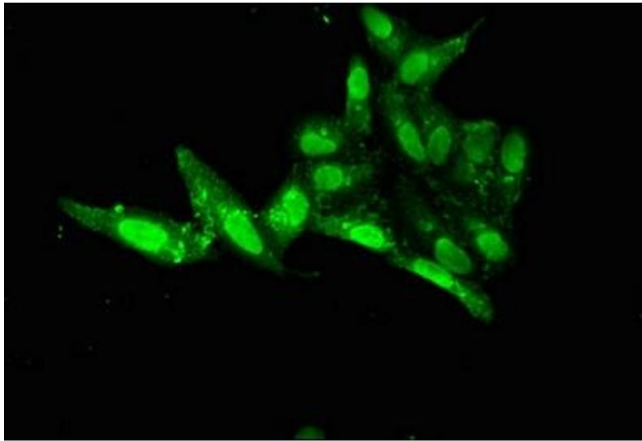
Buffer: Preservative: 0.03 % Proclin 300
Constituents: 50 % Glycerol, 0.01M PBS, pH 7.4

Preservative: ProClin

Precaution of Use: This product contains ProClin: a POISONOUS AND HAZARDOUS SUBSTANCE which should be handled by trained staff only.

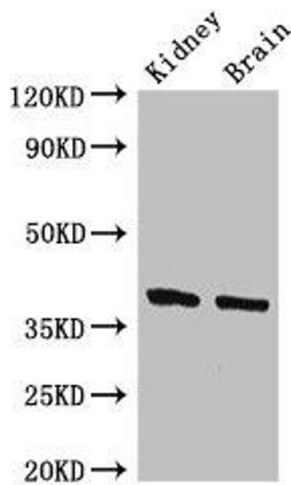
Storage: -20 °C,-80 °C

Storage Comment: Upon receipt, store at -20°C or -80°C. Avoid repeated freeze.



Immunofluorescence

Image 1. Immunofluorescent analysis of HeLa cells using ABIN7153034 at dilution of 1:100 and Alexa Fluor 488-conjugated AffiniPure Goat Anti-Rabbit IgG(H+L)



Western Blotting

Image 2. Western Blot Positive WB detected in: Mouse kidney tissue, Mouse brain tissue All lanes: FOXE1 antibody at 2.4 µg/mL Secondary Goat polyclonal to rabbit IgG at 1/50000 dilution Predicted band size: 39 kDa Observed band size: 39 kDa