



[Go to Product page](#)

Datasheet for ABIN7153129  
**anti-FHL1 antibody (AA 13-240)**

2 Images

Overview

Quantity:	100 µg
Target:	FHL1
Binding Specificity:	AA 13-240
Reactivity:	Human
Host:	Rabbit
Clonality:	Polyclonal
Conjugate:	This FHL1 antibody is un-conjugated
Application:	Western Blotting (WB), ELISA, Immunofluorescence (IF)

Product Details

Immunogen:	Recombinant Human Four and a half LIM domains protein 1 protein (13-240AA)
Isotype:	IgG
Cross-Reactivity:	Human, Mouse, Rat
Purification:	>95%, Protein G purified

Target Details

Target:	FHL1
Alternative Name:	FHL1 ( <a href="#">FHL1 Products</a> )
Background:	Background: May have an involvement in muscle development or hypertrophy. Aliases: bA535K18.1 antibody, FHL 1 antibody, FHL 1B antibody, FHL-1 antibody, FHL1

## Target Details

---

antibody, FHL1 protein antibody, FHL1\_HUMAN antibody, FHL1A antibody, FHL1B antibody, FLH1A antibody, Four and a half LIM domains 1 antibody, Four and a half LIM domains protein 1 antibody, Four and a half Lin11 Isl 1 and Mec 3 domains 1 antibody, four-and-a-half Lin11 antibody, Isl-1 and Mec-3 antibody, KYO T antibody, KYOT, mouse, homolog of antibody, LIM protein SLIMMER antibody, MGC111107 antibody, RAM14-1 antibody, RBMX1A antibody, RBMX1B antibody, RBP associated molecule 14-1 antibody, RP11-535K18.1 antibody, Skeletal muscle LIM protein 1 antibody, Skeletal muscle LIM-protein 1 antibody, SLIM 1 antibody, SLIM antibody, SLIM-1 antibody, SLIM1 antibody, SLIMMER antibody, XMPMA antibody

UniProt: [Q13642](#)

## Application Details

---

Application Notes: Recommended dilution: WB:1:500-1:5000, IF:1:50-1:200,

Restrictions: For Research Use only

## Handling

---

Format: Liquid

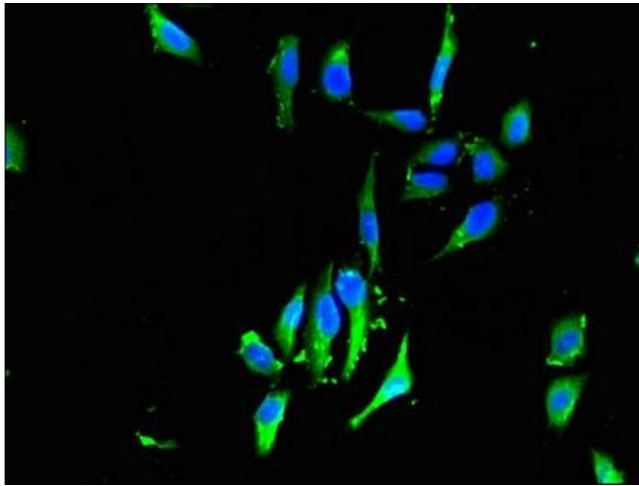
Buffer: Preservative: 0.03 % Proclin 300  
Constituents: 50 % Glycerol, 0.01M PBS, pH 7.4

Preservative: ProClin

Precaution of Use: This product contains ProClin: a POISONOUS AND HAZARDOUS SUBSTANCE which should be handled by trained staff only.

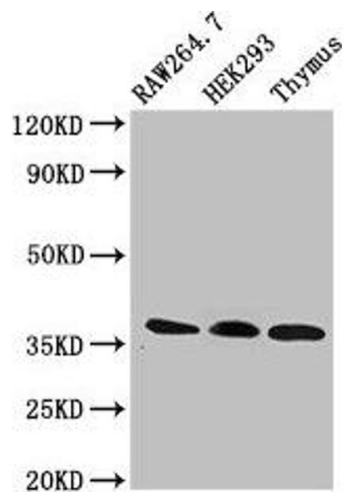
Storage: -20 °C,-80 °C

Storage Comment: Upon receipt, store at -20°C or -80°C. Avoid repeated freeze.



### Immunofluorescence

**Image 1.** Immunofluorescent analysis of HeLa cells using ABIN7153129 at dilution of 1:100 and Alexa Fluor 488-conjugated AffiniPure Goat Anti-Rabbit IgG(H+L)



### Western Blotting

**Image 2.** Western Blot Positive WB detected in: RAW264.7 whole cell lysate, HEK293 whole cell lysate, Rat thymus tissue All lanes: FHL1 antibody at 3  $\mu$ g/mL Secondary Goat polyclonal to rabbit IgG at 1/50000 dilution Predicted band size: 37, 32, 23, 35, 34 kDa Observed band size: 37 kDa