



[Go to Product page](#)

Datasheet for ABIN7153138

## anti-FHL3 antibody (AA 1-280)

### 3 Images

#### Overview

Quantity:	100 µL
Target:	FHL3
Binding Specificity:	AA 1-280
Reactivity:	Human
Host:	Rabbit
Clonality:	Polyclonal
Conjugate:	This FHL3 antibody is un-conjugated
Application:	Western Blotting (WB), ELISA, Immunohistochemistry (IHC)

#### Product Details

Immunogen:	Recombinant Human Four and a half LIM domains protein 3 protein (1-280AA)
Isotype:	IgG
Cross-Reactivity:	Human
Purification:	Antigen Affinity Purified

#### Target Details

Target:	FHL3
Alternative Name:	FHL3 ( <a href="#">FHL3 Products</a> )
Background:	Background: focal adhesion, muscle organ development Aliases: FHL 3 antibody, FHL-3 antibody, Fhl3 antibody, FHL3_HUMAN antibody, Four and a half

## Target Details

LIM domains 3 antibody, Four and a half LIM domains protein 3 antibody, Skeletal muscle LIM protein 2 antibody, Skeletal muscle LIM-protein 2 antibody, SLIM-2 antibody, SLIM2 antibody

UniProt: [Q13643](#)

## Application Details

Application Notes: Recommended dilution: WB:1:1000-1:5000, IHC:1:20-1:200,

Restrictions: For Research Use only

## Handling

Format: Liquid

Buffer: PBS with 0.02 % sodium azide, 50 % glycerol, pH 7.3.

Preservative: Sodium azide

Precaution of Use: This product contains Sodium azide: a POISONOUS AND HAZARDOUS SUBSTANCE which should be handled by trained staff only.

Storage: -20 °C,-80 °C

Storage Comment: Upon receipt, store at -20°C or -80°C. Avoid repeated freeze.

## Images



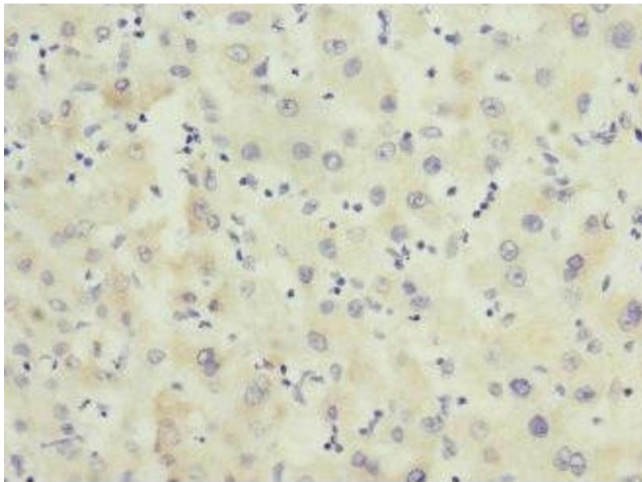
### Immunohistochemistry

**Image 1.** Immunohistochemistry of paraffin-embedded human skeletal muscle tissue using ABIN7153138 at dilution of 1:100



### Western Blotting

**Image 2.** Western blot All lanes: FHL3 antibody at 1.42  $\mu$ g/mL Lane 1: Human placenta tissue Lane 2: K562 whole cell lysate Secondary Goat polyclonal to rabbit IgG at 1/10000 dilution Predicted band size: 31 kDa Observed band size: 31 kDa



### Immunohistochemistry

**Image 3.** Immunohistochemistry of paraffin-embedded human liver tissue using ABIN7153138 at dilution of 1:100