

Datasheet for ABIN7153151
anti-FREM1 antibody (AA 1957-2082)[Go to Product page](#)

1 Image

Overview

Quantity:	100 µg
Target:	FREM1
Binding Specificity:	AA 1957-2082
Reactivity:	Human
Host:	Rabbit
Clonality:	Polyclonal
Conjugate:	This FREM1 antibody is un-conjugated
Application:	ELISA, Immunohistochemistry (IHC)

Product Details

Immunogen:	Recombinant Human FRAS1-related extracellular matrix protein 1 protein (1957-2082AA)
Isotype:	IgG
Cross-Reactivity:	Human
Purification:	>95%, Protein G purified

Target Details

Target:	FREM1
Alternative Name:	FREM1 (FREM1 Products)
Background:	Background: Extracellular matrix protein that plays a role in epidermal differentiation and is required for epidermal adhesion during embryonic development.

Target Details

Aliases: BC037594 antibody, BNAR antibody, C9orf143 antibody, C9orf145 antibody, C9orf154 antibody, D430009N09 antibody, D630008K06 antibody, FLJ25461 antibody, FRAS1-related extracellular matrix protein 1 antibody, FREM 1 antibody, FREM1 antibody, FREM1_HUMAN antibody, Heb antibody, MOTA antibody, Protein QBRICK antibody, QBRICK antibody, RGD1306981 antibody, RP11-265B7.2 antibody, RP23-410K19.1 antibody, TILRR antibody

UniProt: [Q5H8C1](#)

Application Details

Application Notes: Recommended dilution: IHC:1:500-1:1000,

Restrictions: For Research Use only

Handling

Format: Liquid

Buffer: Preservative: 0.03 % Proclin 300
Constituents: 50 % Glycerol, 0.01M PBS, pH 7.4

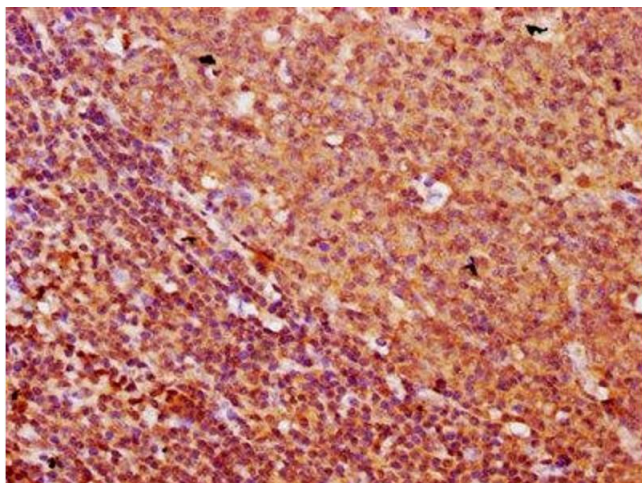
Preservative: ProClin

Precaution of Use: This product contains ProClin: a POISONOUS AND HAZARDOUS SUBSTANCE which should be handled by trained staff only.

Storage: -20 °C,-80 °C

Storage Comment: Upon receipt, store at -20°C or -80°C. Avoid repeated freeze.

Images



Immunohistochemistry

Image 1. IHC image of ABIN7153151 diluted at 1:500 and staining in paraffin-embedded human tonsil tissue performed on a Leica Bond™ system. After dewaxing and hydration, antigen retrieval was mediated by high pressure in a citrate buffer (pH 6.0). Section was blocked with 10% normal goat serum 30min at RT. Then primary antibody (1% BSA) was incubated at 4°C overnight. The primary is detected by a biotinylated secondary antibody and

visualized using an HRP conjugated SP system.