

Datasheet for ABIN7153155
anti-FREM2 antibody (AA 1986-2127)[Go to Product page](#)

2 Images

Overview

Quantity:	100 µg
Target:	FREM2
Binding Specificity:	AA 1986-2127
Reactivity:	Human
Host:	Rabbit
Clonality:	Polyclonal
Conjugate:	This FREM2 antibody is un-conjugated
Application:	ELISA, Immunofluorescence (IF), Immunohistochemistry (IHC)

Product Details

Immunogen:	Recombinant Human FRAS1-related extracellular matrix protein 2 protein (1986-2127AA)
Isotype:	IgG
Cross-Reactivity:	Human
Purification:	>95%, Protein G purified

Target Details

Target:	FREM2
Alternative Name:	FREM2 (FREM2 Products)
Background:	Background: Extracellular matrix protein required for maintenance of the integrity of the skin epithelium and for maintenance of renal epithelia. May be required for epidermal adhesion.

Target Details

Aliases: DKFZp781I048 antibody, ECM3 homolog antibody, FRAS1-related extracellular matrix protein 2 antibody, FREM 2 antibody, Frem2 antibody, FREM2_HUMAN antibody, KIAA1074 antibody

UniProt: [Q5SZK8](#)

Application Details

Application Notes: Recommended dilution: IHC:1:200-1:500, IF:1:50-1:200,

Restrictions: For Research Use only

Handling

Format: Liquid

Buffer: Preservative: 0.03 % Proclin 300
Constituents: 50 % Glycerol, 0.01M PBS, pH 7.4

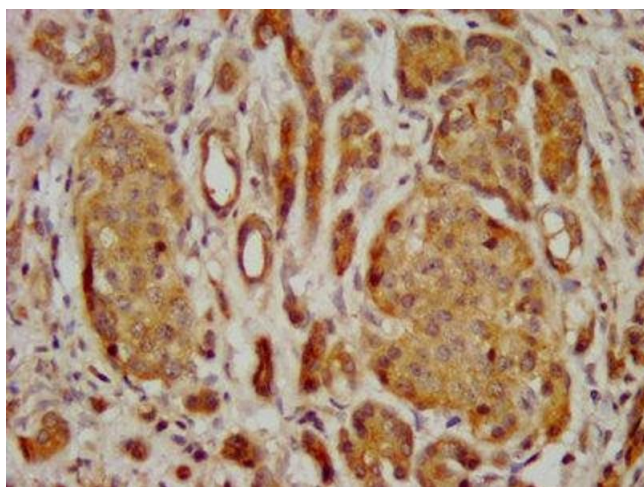
Preservative: ProClin

Precaution of Use: This product contains ProClin: a POISONOUS AND HAZARDOUS SUBSTANCE which should be handled by trained staff only.

Storage: -20 °C,-80 °C

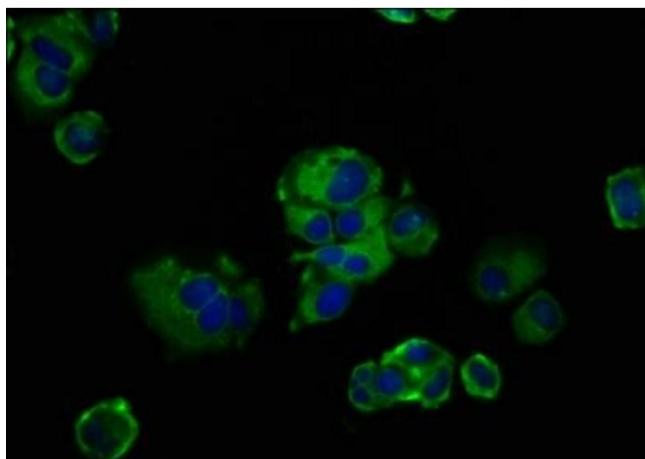
Storage Comment: Upon receipt, store at -20°C or -80°C. Avoid repeated freeze.

Images



Immunohistochemistry

Image 1. IHC image of ABIN7153155 diluted at 1:400 and staining in paraffin-embedded human pancreatic cancer performed on a Leica Bond™ system. After dewaxing and hydration, antigen retrieval was mediated by high pressure in a citrate buffer (pH 6.0). Section was blocked with 10% normal goat serum 30min at RT. Then primary antibody (1% BSA) was incubated at 4°C overnight. The primary is detected by a biotinylated secondary antibody and visualized using an HRP conjugated SP system.



Immunofluorescence

Image 2. Immunofluorescence staining of MCF-7 cells with ABIN7153155 at 1:133, counter-stained with DAPI. The cells were fixed in 4% formaldehyde, permeabilized using 0.2% Triton X-100 and blocked in 10% normal Goat Serum. The cells were then incubated with the antibody overnight at 4°C. The secondary antibody was Alexa Fluor 488-conjugated AffiniPure Goat Anti-Rabbit IgG(H+L).