

Datasheet for ABIN715316  
**anti-RAB8A antibody (AA 101-207)**

## 2 Images

[Go to Product page](#)

## Overview

Quantity:	100 µL
Target:	RAB8A
Binding Specificity:	AA 101-207
Reactivity:	Human, Mouse, Rat
Host:	Rabbit
Clonality:	Polyclonal
Conjugate:	This RAB8A antibody is un-conjugated
Application:	Western Blotting (WB), Immunohistochemistry (Paraffin-embedded Sections) (IHC (p)), Immunohistochemistry (Frozen Sections) (IHC (fro)), Immunofluorescence (Cultured Cells) (IF (cc)), Immunofluorescence (Paraffin-embedded Sections) (IF (p))

## Product Details

Immunogen:	KLH conjugated synthetic peptide derived from human RAB8A
Isotype:	IgG
Cross-Reactivity:	Human, Mouse, Rat
Predicted Reactivity:	Cow, Sheep, Chicken
Purification:	Purified by Protein A.

## Target Details

Target:	RAB8A
---------	-------

## Target Details

Alternative Name: Rab8 ([RAB8A Products](#))

Background: Synonyms: MEL, RAB8, Ras-related protein Rab-8A, Oncogene c-mel, RAB8A  
Background: The small GTPases Rab are key regulators of intracellular membrane trafficking, from the formation of transport vesicles to their fusion with membranes. Rabs cycle between an inactive GDP-bound form and an active GTP-bound form that is able to recruit to membranes different sets of downstream effectors directly responsible for vesicle formation, movement, tethering and fusion. That Rab is involved in polarized vesicular trafficking and neurotransmitter release. Together with RAB11A, RAB3IP, the exocyst complex, PARD3, PRKCI, ANXA2, CDC42 and DNMBP promotes transcytosis of PODXL to the apical membrane initiation sites (AMIS), apical surface formation and lumenogenesis. Together with MYO5B and RAB11A participates in epithelial cell polarization. Plays an important role in ciliogenesis. Together with MICALL2, may also regulate adherens junction assembly. May play a role in insulin-induced transport to the plasma membrane of the glucose transporter GLUT4 and therefore play a role in glucose homeostasis.

Gene ID: 4218

UniProt: [P61006](#)

Pathways: [M Phase](#), [Regulation of long-term Neuronal Synaptic Plasticity](#), [SARS-CoV-2 Protein Interactome](#)

## Application Details

Application Notes: WB 1:300-5000  
IHC-P 1:200-400  
IHC-F 1:100-500  
IF(IHC-P) 1:50-200  
IF(IHC-F) 1:50-200  
IF(ICC) 1:50-200

Restrictions: For Research Use only

## Handling

Format: Liquid

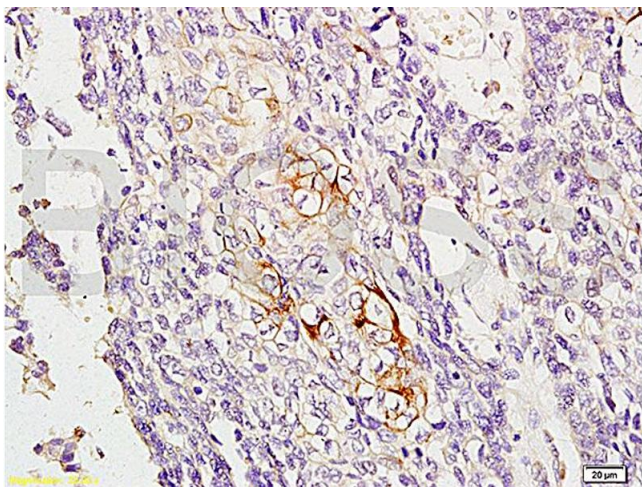
Concentration: 1 µg/µL

Buffer: 0.01M TBS( pH 7.4) with 1 % BSA, 0.02 % Proclin300 and 50 % Glycerol.

# Handling

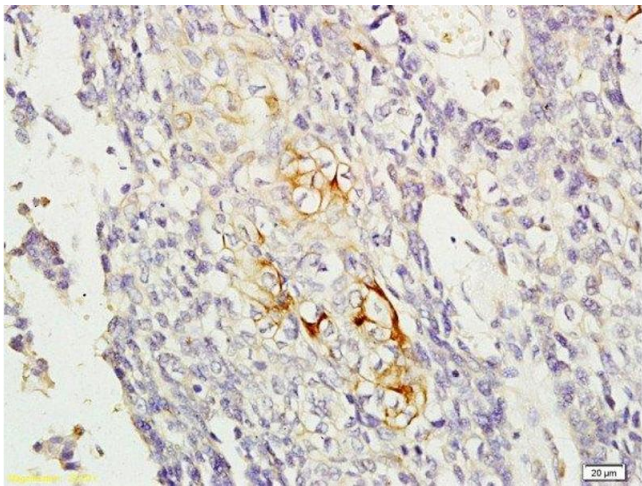
Preservative:	ProClin
Precaution of Use:	This product contains ProClin: a POISONOUS AND HAZARDOUS SUBSTANCE, which should be handled by trained staff only.
Storage:	4 °C,-20 °C
Storage Comment:	Shipped at 4°C. Store at -20°C for one year. Avoid repeated freeze/thaw cycles.
Expiry Date:	12 months

# Images



## Immunohistochemistry

**Image 1.** Formalin-fixed and paraffin embedded human esophageal carcinoma labeled with Anti-RAB8 Polyclonal Antibody, Unconjugated (ABIN715316) at 1:200, followed by conjugation to the secondary antibody and DAB staining



## Immunohistochemistry (Paraffin-embedded Sections)

**Image 2.** Formalin-fixed and paraffin embedded human esophageal carcinoma labeled with Anti-RAB8 Polyclonal Antibody, Unconjugated at 1:200, followed by conjugation to the secondary antibody and DAB staining