

Datasheet for ABIN7153175  
**anti-FZD1 antibody (AA 73-322)**[Go to Product page](#)

## 3 Images

## Overview

Quantity:	100 µg
Target:	FZD1 (Fzd1)
Binding Specificity:	AA 73-322
Reactivity:	Human
Host:	Rabbit
Clonality:	Polyclonal
Conjugate:	This FZD1 antibody is un-conjugated
Application:	ELISA, Immunohistochemistry (IHC), Immunofluorescence (IF)

## Product Details

Immunogen:	Recombinant Human Frizzled-1 protein (73-322AA)
Isotype:	IgG
Cross-Reactivity:	Human
Purification:	>95%, Protein G purified

## Target Details

Target:	FZD1 (Fzd1)
Alternative Name:	FZD1 ( <a href="#">Fzd1 Products</a> )
Background:	Background: Receptor for Wnt proteins. Most of frizzled receptors are coupled to the beta-catenin canonical signaling pathway, which leads to the activation of disheveled proteins,

## Target Details

inhibition of GSK-3 kinase, nuclear accumulation of beta-catenin and activation of Wnt target genes. A second signaling pathway involving PKC and calcium fluxes has been seen for some family members, but it is not yet clear if it represents a distinct pathway or if it can be integrated in the canonical pathway, as PKC seems to be required for Wnt-mediated inactivation of GSK-3 kinase. Both pathways seem to involve interactions with G-proteins. May be involved in transduction and intercellular transmission of polarity information during tissue morphogenesis and/or in differentiated tissues. Activated by Wnt3A, Wnt3, Wnt1 and to a lesser extent Wnt2, but not by Wnt4, Wnt5A, Wnt5B, Wnt6, Wnt7A or Wnt7B.

Aliases: Chfz-1 antibody, Dfrizzled-1 antibody, DKFZp564G072 antibody, FLJ95923 antibody, Frizzled 1 antibody, Frizzled homolog 1 (Drosophila) antibody, Frizzled homolog 1 antibody, Frizzled-1 antibody, Fz receptor 1 antibody, Fz-1 antibody, Fz1 antibody, FZD1 antibody, FZD1\_HUMAN antibody, FzE1 antibody, hFz1 antibody, Rfz1 antibody, Wnt receptor antibody, Xfrizzled-1 antibody

UniProt: [Q9UP38](#)

Pathways: [WNT Signaling](#), [Asymmetric Protein Localization](#)

## Application Details

Application Notes: Recommended dilution: IHC:1:20-1:200, IF:1:50-1:200,

Restrictions: For Research Use only

## Handling

Format: Liquid

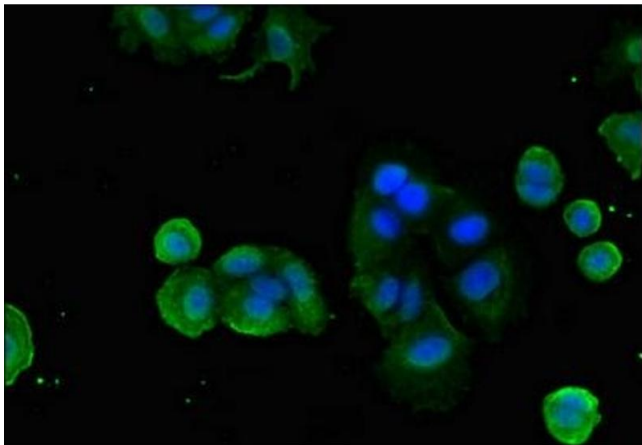
Buffer: Preservative: 0.03 % Proclin 300  
Constituents: 50 % Glycerol, 0.01M PBS, pH 7.4

Preservative: ProClin

Precaution of Use: This product contains ProClin: a POISONOUS AND HAZARDOUS SUBSTANCE which should be handled by trained staff only.

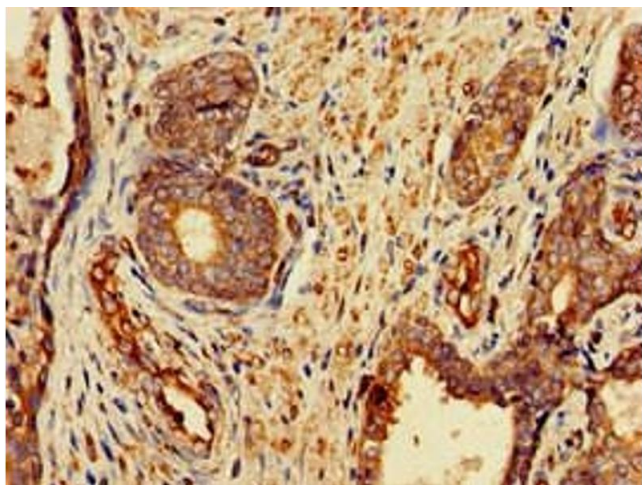
Storage: -20 °C, -80 °C

Storage Comment: Upon receipt, store at -20°C or -80°C. Avoid repeated freeze.



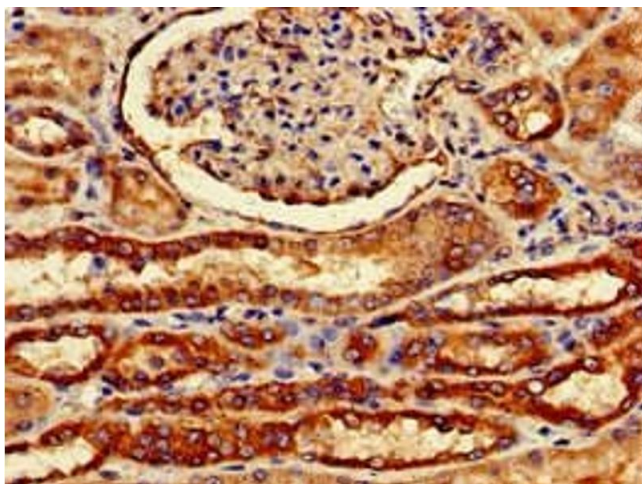
#### Immunofluorescence

**Image 1.** Immunofluorescent analysis of MCF-7 cells using ABIN7153175 at dilution of 1:100 and Alexa Fluor 488-conjugated AffiniPure Goat Anti-Rabbit IgG(H+L)



#### Immunohistochemistry

**Image 2.** Immunohistochemistry of paraffin-embedded human prostate cancer using ABIN7153175 at dilution of 1:100



#### Immunohistochemistry

**Image 3.** Immunohistochemistry of paraffin-embedded human kidney tissue using ABIN7153175 at dilution of 1:100