

Datasheet for ABIN7153202
anti-FBP1 antibody (AA 1-338)[Go to Product page](#)

2 Images

Overview

Quantity:	100 µL
Target:	FBP1
Binding Specificity:	AA 1-338
Reactivity:	Human
Host:	Rabbit
Clonality:	Polyclonal
Conjugate:	This FBP1 antibody is un-conjugated
Application:	Immunohistochemistry (IHC), ELISA

Product Details

Immunogen:	Recombinant Human Fructose-1,6-bisphosphatase 1 protein (1-338AA)
Isotype:	IgG
Cross-Reactivity:	Human
Purification:	Antigen Affinity Purified

Target Details

Target:	FBP1
Alternative Name:	FBP1 (FBP1 Products)
Background:	Background: Catalyzes the hydrolysis of fructose 1,6-bisphosphate to fructose 6-phosphate in the presence of divalent cations, acting as a rate-limiting enzyme in gluconeogenesis. Plays a

Target Details

role in regulating glucose sensing and insulin secretion of pancreatic beta-cells. Appears to modulate glycerol gluconeogenesis in liver. Important regulator of appetite and adiposity, increased expression of the protein in liver after nutrient excess increases circulating satiety hormones and reduces appetite-stimulating neuropeptides and thus seems to provide a feedback mechanism to limit weight gain.

Aliases: 6-bisphosphatase 1 antibody, 6-bisphosphate 1-phosphohydrolase 1 antibody, D fructose 1 6 bisphosphate 1 phosphohydrolase 1 antibody, D-fructose-1 antibody, EC 3.1.3.11 antibody, F16P1_HUMAN antibody, FBP antibody, FBP 1 antibody, FBP1 antibody, FBPase 1 antibody, Fructose 1 6 bisphosphatase 1 antibody, Fructose bisphosphatase 1 antibody, Fructose-1 antibody, Growth inhibiting protein 17 antibody, Liver fructose bisphosphatase antibody

UniProt: [P09467](#)

Pathways: [Cellular Glucan Metabolic Process](#), [Regulation of Carbohydrate Metabolic Process](#), [Dicarboxylic Acid Transport](#)

Application Details

Application Notes: Recommended dilution: IHC:1:20-1:200,

Restrictions: For Research Use only

Handling

Format: Liquid

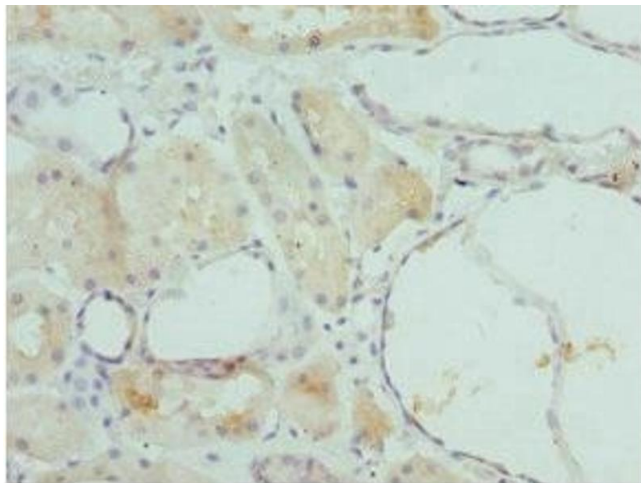
Buffer: PBS with 0.02 % sodium azide, 50 % glycerol, pH 7.3.

Preservative: Sodium azide

Precaution of Use: This product contains Sodium azide: a POISONOUS AND HAZARDOUS SUBSTANCE which should be handled by trained staff only.

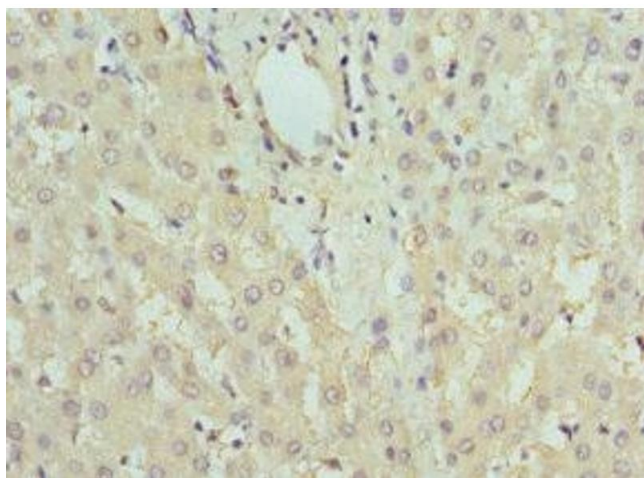
Storage: -20 °C, -80 °C

Storage Comment: Upon receipt, store at -20°C or -80°C. Avoid repeated freeze.



Immunohistochemistry

Image 1. Immunohistochemistry of paraffin-embedded human kidney tissue using ABIN7153202 at dilution of 1:100



Immunohistochemistry

Image 2. Immunohistochemistry of paraffin-embedded human liver tissue using ABIN7153202 at dilution of 1:100