



[Go to Product page](#)

Datasheet for ABIN7153211
anti-ALDOA antibody (AA 2-364)

2 Images

Overview

Quantity:	100 µg
Target:	ALDOA
Binding Specificity:	AA 2-364
Reactivity:	Human
Host:	Rabbit
Clonality:	Polyclonal
Conjugate:	This ALDOA antibody is un-conjugated
Application:	Western Blotting (WB), ELISA, Immunohistochemistry (IHC)

Product Details

Immunogen:	Recombinant Human Fructose-bisphosphate aldolase A protein (2-364AA)
Isotype:	IgG
Cross-Reactivity:	Human, Rat
Purification:	>95%, Protein G purified

Target Details

Target:	ALDOA
Alternative Name:	ALDOA (ALDOA Products)
Background:	Background: Plays a key role in glycolysis and gluconeogenesis. In addition, may also function as scaffolding protein .Defects in ALDOA are the cause of glycogen storage disease type 12

Target Details

(GSD12) [MIM:611881], also known as red cell aldolase deficiency. A metabolic disorder associated with increased hepatic glycogen and hemolytic anemia. It may lead to myopathy with exercise intolerance and rhabdomyolysis. Belongs to the class I fructose-bisphosphate aldolase family.

Aliases: ALDA antibody, Aldo1 antibody, ALDOA antibody, ALDOA_HUMAN antibody, Aldolase 1 antibody, Aldolase A antibody, Aldolase A fructose bisphosphatase antibody, Aldolase A fructose bisphosphate antibody, Aldolase, fructose-bisphosphate A antibody, Epididymis secretory sperm binding protein Li 87p antibody, FRUCTOALDOLASE A antibody, Fructose 1 6 bisphosphate triosephosphate lyase antibody, Fructose bisphosphate aldolase A antibody, Fructose bisphosphate aldolase antibody, FRUCTOSE-1,6-BISPHOSPHATE ALDOLASE A antibody, Fructose-bisphosphate aldolase A antibody, Fructose-bisphosphate aldolase A Muscle-type antibody, GSD12 antibody, HEL S 87p antibody, Lung cancer antigen NY LU 1 antibody, Lung cancer antigen NY-LU-1 antibody, MGC10942 antibody, MGC17716 antibody, MGC17767 antibody, Muscle type aldolase antibody, Muscle-type aldolase antibody, RNALDOG5 antibody

UniProt: [P04075](#)

Pathways: [Ribonucleoside Biosynthetic Process](#)

Application Details

Application Notes: Recommended dilution: WB:1:500-1:5000, IHC:1:20-1:200,

Restrictions: For Research Use only

Handling

Format: Liquid

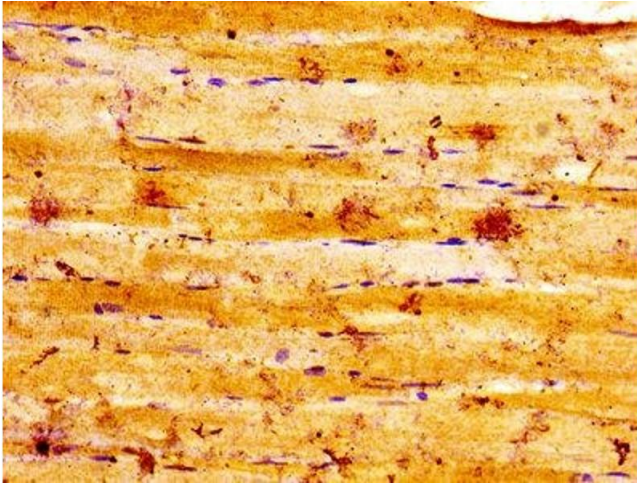
Buffer: Preservative: 0.03 % Proclin 300
Constituents: 50 % Glycerol, 0.01M PBS, PH 7.4

Preservative: ProClin

Precaution of Use: This product contains ProClin: a POISONOUS AND HAZARDOUS SUBSTANCE which should be handled by trained staff only.

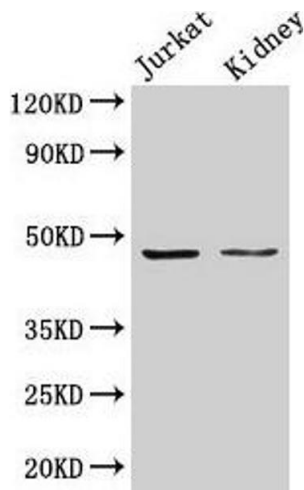
Storage: -20 °C,-80 °C

Storage Comment: Upon receipt, store at -20°C or -80°C. Avoid repeated freeze.



Immunohistochemistry

Image 1. IHC image of ABIN7153211 diluted at 1:100 and staining in paraffin-embedded human skeletal muscle tissue performed on a Leica Bond™ system. After dewaxing and hydration, antigen retrieval was mediated by high pressure in a citrate buffer (pH 6.0). Section was blocked with 10% normal goat serum 30min at RT. Then primary antibody (1% BSA) was incubated at 4°C overnight. The primary is detected by a biotinylated secondary antibody and visualized using an HRP conjugated SP system.



Western Blotting

Image 2. Western Blot Positive WB detected in: Jurkat whole cell lysate, Rat kidney tissue All lanes: ALDOA antibody at 3 µg/mL Secondary Goat polyclonal to rabbit IgG at 1/50000 dilution Predicted band size: 40, 46 kDa Observed band size: 46 kDa