



[Go to Product page](#)

Datasheet for ABIN7153215
anti-ALDOC antibody (AA 190-354)

4 Images

Overview

| | |
|----------------------|---|
| Quantity: | 100 µg |
| Target: | ALDOC |
| Binding Specificity: | AA 190-354 |
| Reactivity: | Human |
| Host: | Rabbit |
| Clonality: | Polyclonal |
| Conjugate: | This ALDOC antibody is un-conjugated |
| Application: | Western Blotting (WB), ELISA, Immunohistochemistry (IHC), Immunofluorescence (IF) |

Product Details

| | |
|-------------------|--|
| Immunogen: | Recombinant Human Fructose-bisphosphate aldolase C protein (190-354AA) |
| Isotype: | IgG |
| Cross-Reactivity: | Human, Mouse |
| Purification: | >95%, Protein G purified |

Target Details

| | |
|-------------------|---|
| Target: | ALDOC |
| Alternative Name: | ALDOC (ALDOC Products) |
| Background: | Background: cytoskeleton, cytosol, extracellular exosome, cytoskeletal protein binding, fructose-bisphosphate aldolase activity, canonical glycolysis, epithelial cell differentiation, |

Target Details

fructose 1,6-bisphosphate metabolic process, fructose metabolic process, gluconeogenesis
Aliases: ALDC antibody, ALDO C antibody, aldolase antibody, ALDOC_HUMAN antibody, Aldolase 3 antibody, Aldolase C Fructose bisphosphate antibody, Brain type aldolase antibody, Brain-type aldolase antibody, Fructoaldolase C antibody, Fructose 1 6 biphosphate triosephosphate lyase antibody, Fructose bisphosphate aldolase C antibody, Fructose-bisphosphate aldolase C antibody

UniProt: [P09972](#)

Application Details

Application Notes: Recommended dilution: WB:1:2000-1:5000, IHC:1:20-1:200, IF:1:50-1:200,

Restrictions: For Research Use only

Handling

Format: Liquid

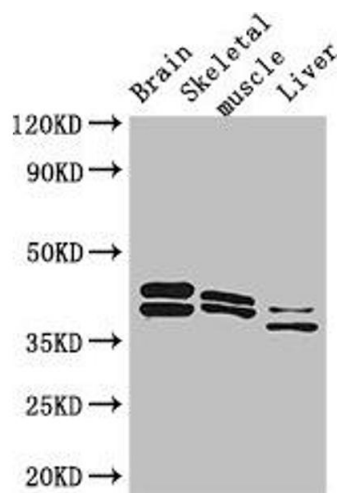
Buffer: Preservative: 0.03 % Proclin 300
Constituents: 50 % Glycerol, 0.01M PBS, PH 7.4

Preservative: ProClin

Precaution of Use: This product contains ProClin: a POISONOUS AND HAZARDOUS SUBSTANCE which should be handled by trained staff only.

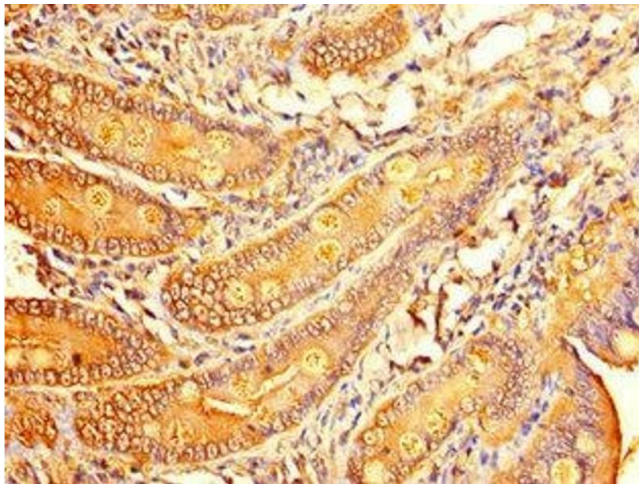
Storage: -20 °C,-80 °C

Storage Comment: Upon receipt, store at -20°C or -80°C. Avoid repeated freeze.



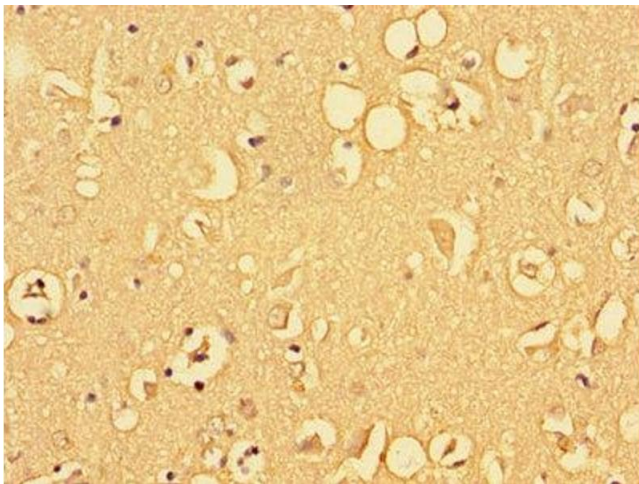
Western Blotting

Image 1. Western Blot Positive WB detected in: Mouse brain tissue, Mouse skeletal muscle tissue, Mouse liver tissue All lanes: ALDOC antibody at 3 µg/mL Secondary Goat polyclonal to rabbit IgG at 1/50000 dilution Predicted band size: 40 kDa Observed band size: 40, 36, 42 kDa



Immunohistochemistry

Image 2. Immunohistochemistry of paraffin-embedded human small intestine tissue using ABIN7153215 at dilution of 1:100



Immunohistochemistry

Image 3. Immunohistochemistry of paraffin-embedded human brain tissue using ABIN7153215 at dilution of 1:100

Please check the [product details page](#) for more images. Overall 4 images are available for ABIN7153215.