



[Go to Product page](#)

Datasheet for ABIN7153223  
**anti-FUOM antibody (AA 1-134)**

3 Images

### Overview

Quantity:	100 µg
Target:	FUOM
Binding Specificity:	AA 1-134
Reactivity:	Human
Host:	Rabbit
Clonality:	Polyclonal
Conjugate:	This FUOM antibody is un-conjugated
Application:	ELISA, Immunohistochemistry (IHC), Immunofluorescence (IF)

### Product Details

Immunogen:	Recombinant Human Fucose mutarotase protein (1-134AA)
Isotype:	IgG
Cross-Reactivity:	Human
Purification:	>95%, Protein G purified

### Target Details

Target:	FUOM
Alternative Name:	FUOM ( <a href="#">FUOM Products</a> )
Background:	Background: Involved in the interconversion between alpha- and beta-L-fucoses. L-Fucose (6-deoxy-L-galactose) exists as alpha-L-fucose (29.5 %) and beta-L-fucose (70.5 %), the beta-form

## Target Details

---

is metabolized through the salvage pathway. GDP-L-fucose formed either by the de novo or salvage pathways is transported into the endoplasmic reticulum, where it serves as a substrate for N- and O-glycosylations by fucosyltransferases. Fucosylated structures expressed on cell surfaces or secreted in biological fluids are believed to play a critical role in cell-cell adhesion and recognition processes.

Aliases: FUOM antibody, C10orf125Fucose mutarotase antibody, EC 5.1.3.29 antibody

---

UniProt: [A2VDF0](#)

## Application Details

---

Application Notes: Recommended dilution: IHC:1:20-1:200, IF:1:50-1:200,

Restrictions: For Research Use only

## Handling

---

Format: Liquid

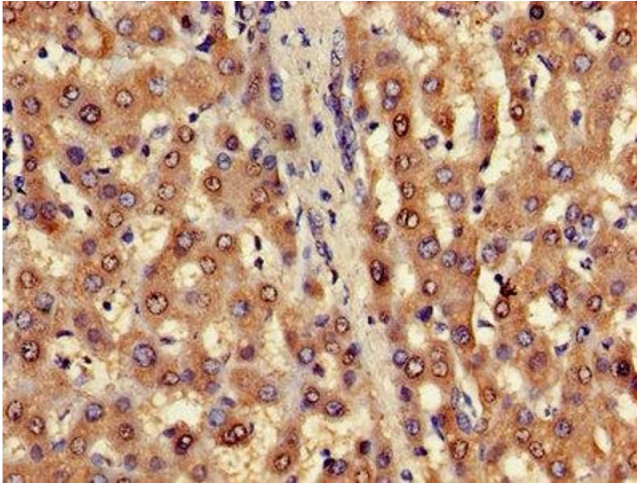
Buffer: Preservative: 0.03 % Proclin 300  
Constituents: 50 % Glycerol, 0.01M PBS, PH 7.4

Preservative: ProClin

Precaution of Use: This product contains ProClin: a POISONOUS AND HAZARDOUS SUBSTANCE which should be handled by trained staff only.

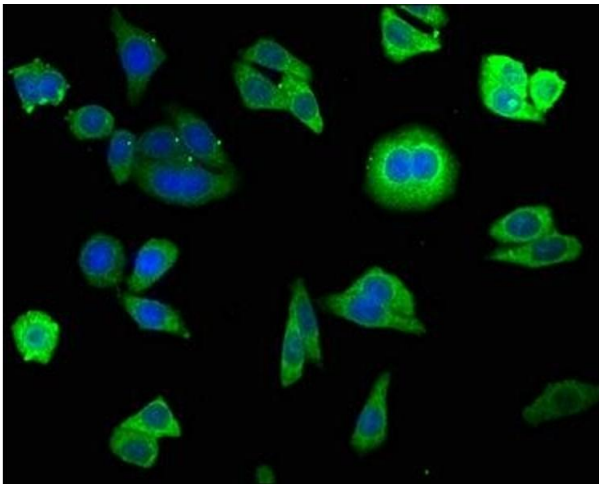
Storage: -20 °C,-80 °C

Storage Comment: Upon receipt, store at -20°C or -80°C. Avoid repeated freeze.



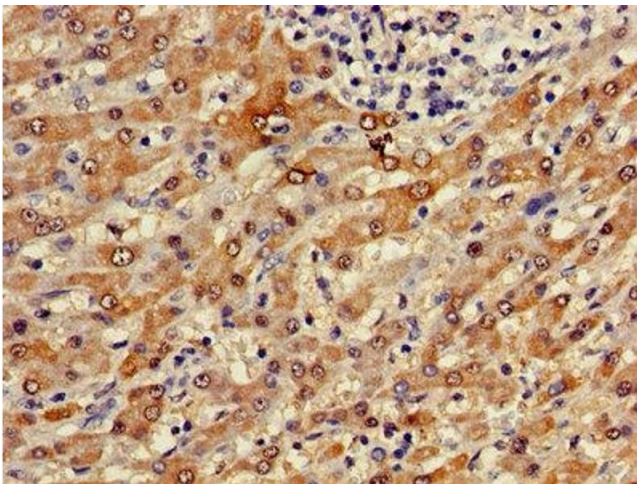
#### Immunohistochemistry

**Image 1.** Immunohistochemistry of paraffin-embedded human liver tissue using ABIN7153223 at dilution of 1:100



#### Immunofluorescence

**Image 2.** Immunofluorescence staining of HepG2 cells with ABIN7153223 at 1:140, counter-stained with DAPI. The cells were fixed in 4% formaldehyde, permeabilized using 0.2% Triton X-100 and blocked in 10% normal Goat Serum. The cells were then incubated with the antibody overnight at 4°C. The secondary antibody was Alexa Fluor 488-conjugated AffiniPure Goat Anti-Rabbit IgG(H+L).



#### Immunohistochemistry

**Image 3.** Immunohistochemistry of paraffin-embedded human liver cancer using ABIN7153223 at dilution of 1:100