

Datasheet for ABIN7153285  
**anti-KCNJ3 antibody (AA 350-487)**[Go to Product page](#)

## 2 Images

## Overview

Quantity:	100 µg
Target:	KCNJ3
Binding Specificity:	AA 350-487
Reactivity:	Human
Host:	Rabbit
Clonality:	Polyclonal
Conjugate:	This KCNJ3 antibody is un-conjugated
Application:	ELISA, Immunofluorescence (IF), Immunohistochemistry (IHC)

## Product Details

Immunogen:	Recombinant Human G protein-activated inward rectifier potassium channel 1 protein (350-487AA)
Isotype:	IgG
Cross-Reactivity:	Human
Purification:	>95%, Protein G purified

## Target Details

Target:	KCNJ3
Alternative Name:	KCNJ3 ( <a href="#">KCNJ3 Products</a> )
Background:	Background: This potassium channel is controlled by G proteins. Inward rectifier potassium

## Target Details

channels are characterized by a greater tendency to allow potassium to flow into the cell rather than out of it. Their voltage dependence is regulated by the concentration of extracellular potassium, as external potassium is raised, the voltage range of the channel opening shifts to more positive voltages. The inward rectification is mainly due to the blockage of outward current by internal magnesium. This receptor plays a crucial role in regulating the heartbeat.

Aliases: G protein activated inward rectifier potassium channel 1 antibody, G protein-activated inward rectifier potassium channel 1 antibody, GIRK-1 antibody, GIRK1 antibody, Inward rectifier K(+) channel Kir3.1 antibody, Inwardly rectifying potassium channel KIR3.1 antibody, inwardly rectifying subfamily J member 3 antibody, IRK3 antibody, IRK3\_HUMAN antibody, Kcnf3 antibody, Kcnj3 antibody, KGA antibody, KGB1 antibody, Kir3.1 antibody, Potassium channel antibody, Potassium channel, inwardly rectifying subfamily J member 3 antibody, Potassium inwardly-rectifying channel, subfamily J, member 3 antibody

UniProt: [P48549](#)

## Application Details

Application Notes: Recommended dilution: IHC:1:20-1:200, IF:1:50-1:200,

Restrictions: For Research Use only

## Handling

Format: Liquid

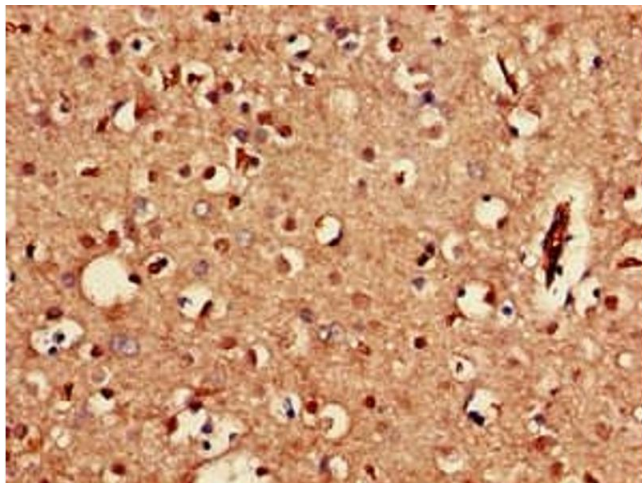
Buffer: Preservative: 0.03 % Proclin 300  
Constituents: 50 % Glycerol, 0.01M PBS, pH 7.4

Preservative: ProClin

Precaution of Use: This product contains ProClin: a POISONOUS AND HAZARDOUS SUBSTANCE which should be handled by trained staff only.

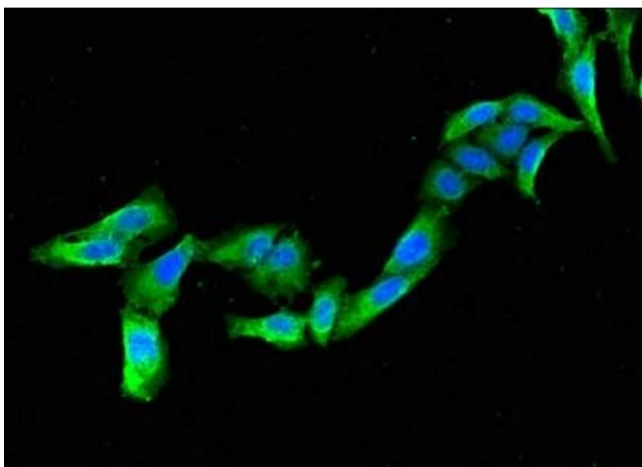
Storage: -20 °C,-80 °C

Storage Comment: Upon receipt, store at -20°C or -80°C. Avoid repeated freeze.



#### Immunohistochemistry

**Image 1.** Immunohistochemistry of paraffin-embedded human brain tissue using ABIN7153285 at dilution of 1:100



#### Immunofluorescence

**Image 2.** Immunofluorescent analysis of HeLa cells using ABIN7153285 at dilution of 1:100 and Alexa Fluor 488-conjugated AffiniPure Goat Anti-Rabbit IgG(H+L)