

Datasheet for ABIN7153302  
**anti-GRK6 antibody (AA 1-170)**[Go to Product page](#)

## 2 Images

## Overview

Quantity:	100 µL
Target:	GRK6
Binding Specificity:	AA 1-170
Reactivity:	Human
Host:	Rabbit
Clonality:	Polyclonal
Conjugate:	This GRK6 antibody is un-conjugated
Application:	Western Blotting (WB), ELISA, Immunohistochemistry (IHC)

## Product Details

Immunogen:	Recombinant Human G protein-coupled receptor kinase 6 protein (1-170AA)
Isotype:	IgG
Cross-Reactivity:	Human, Rat
Purification:	Antigen Affinity Purified

## Target Details

Target:	GRK6
Alternative Name:	GRK6 ( <a href="#">GRK6 Products</a> )
Background:	Background: Specifically phosphorylates the activated forms of G protein-coupled receptors. Such receptor phosphorylation initiates beta-arrestin-mediated receptor desensitization,

## Target Details

internalization, and signaling events leading to their desensitization. Seems to be involved in the desensitization of D2-like dopamine receptors in striatum and chemokine receptor CXCR4 which is critical for CXCL12-induced cell chemotaxis (By similarity). Phosphorylates rhodopsin (RHO) (in vitro) and a non G-protein-coupled receptor: LRP6 during Wnt signaling (in vitro).  
Aliases: FLJ32135 antibody, G protein coupled receptor kinase 6 antibody, G protein coupled receptor kinase GRK6 antibody, G protein-coupled receptor kinase 6 antibody, G protein-coupled receptor kinase GRK6 antibody, Gprk6 antibody, Grk6 antibody, GRK6\_HUMAN antibody

UniProt: [P43250](#)

Pathways: [Myometrial Relaxation and Contraction](#), [Regulation of G-Protein Coupled Receptor Protein Signaling](#), [CXCR4-mediated Signaling Events](#), [Negative Regulation of Transporter Activity](#)

## Application Details

Application Notes: Recommended dilution: WB:1:500-1:2000, IHC:1:20-1:200,

Restrictions: For Research Use only

## Handling

Format: Liquid

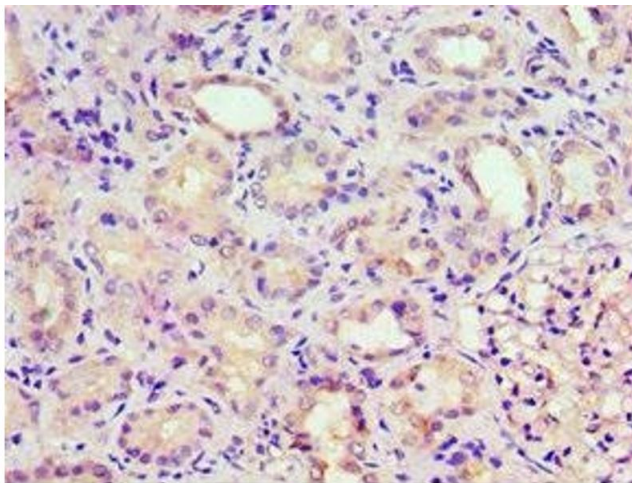
Buffer: PBS with 0.02 % sodium azide, 50 % glycerol, pH 7.3.

Preservative: Sodium azide

Precaution of Use: This product contains Sodium azide: a POISONOUS AND HAZARDOUS SUBSTANCE which should be handled by trained staff only.

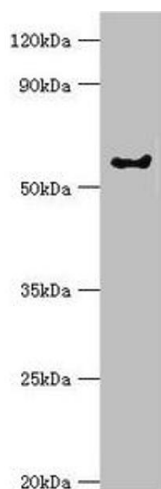
Storage: -20 °C, -80 °C

Storage Comment: Upon receipt, store at -20°C or -80°C. Avoid repeated freeze.



### Immunohistochemistry

**Image 1.** Immunohistochemistry of paraffin-embedded human kidney tissue using ABIN7153302 at dilution of 1:100



### Western Blotting

**Image 2.** Western blot All lanes: G protein-coupled receptor kinase 6 antibody at 6 µg/mL + Rat heart tissue Secondary Goat polyclonal to rabbit IgG at 1/10000 dilution Predicted band size: 66, 68, 65 kDa Observed band size: 66 kDa