

Datasheet for ABIN7153319

**anti-G Protein-Coupled Receptor 12 antibody (AA 1-48)**[Go to Product page](#)**3** Images

## Overview

Quantity:	100 µg
Target:	G Protein-Coupled Receptor 12 (GPR12)
Binding Specificity:	AA 1-48
Reactivity:	Human
Host:	Rabbit
Clonality:	Polyclonal
Conjugate:	This G Protein-Coupled Receptor 12 antibody is un-conjugated
Application:	Western Blotting (WB), ELISA, Immunohistochemistry (IHC), Immunofluorescence (IF)

## Product Details

Immunogen:	Recombinant Human G-protein coupled receptor 12 protein (1-48AA)
Isotype:	IgG
Cross-Reactivity:	Human
Purification:	>95%, Protein G purified

## Target Details

Target:	G Protein-Coupled Receptor 12 (GPR12)
Alternative Name:	GPR12 ( <a href="#">GPR12 Products</a> )
Background:	Background: Promotes neurite outgrowth and blocks myelin inhibition in neurons (By similarity). Receptor with constitutive G(s) signaling activity that stimulates cyclic AMP production.

## Target Details

Aliases: FLJ18149 antibody, FLJ97704 antibody, G protein coupled receptor 12 antibody, G-protein coupled receptor 12 antibody, GPCR12 antibody, GPCR21 antibody, GPR 12 antibody, Gpr12 antibody, GPR12\_HUMAN antibody, MGC138349 antibody, MGC138351 antibody, Probable G protein coupled receptor GPR12 antibody

UniProt: [P47775](#)

## Application Details

Application Notes: Recommended dilution: WB:1:500-1:5000, IHC:1:20-1:200, IF:1:50-1:200,

Restrictions: For Research Use only

## Handling

Format: Liquid

Buffer: Preservative: 0.03 % Proclin 300  
Constituents: 50 % Glycerol, 0.01M PBS, pH 7.4

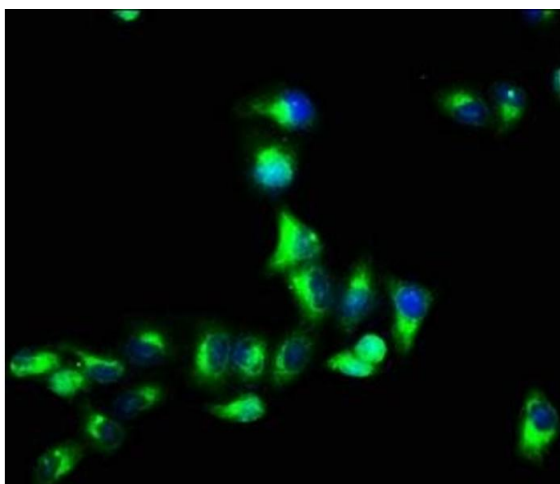
Preservative: ProClin

Precaution of Use: This product contains ProClin: a POISONOUS AND HAZARDOUS SUBSTANCE which should be handled by trained staff only.

Storage: -20 °C,-80 °C

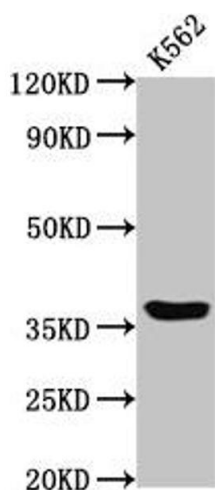
Storage Comment: Upon receipt, store at -20°C or -80°C. Avoid repeated freeze.

## Images



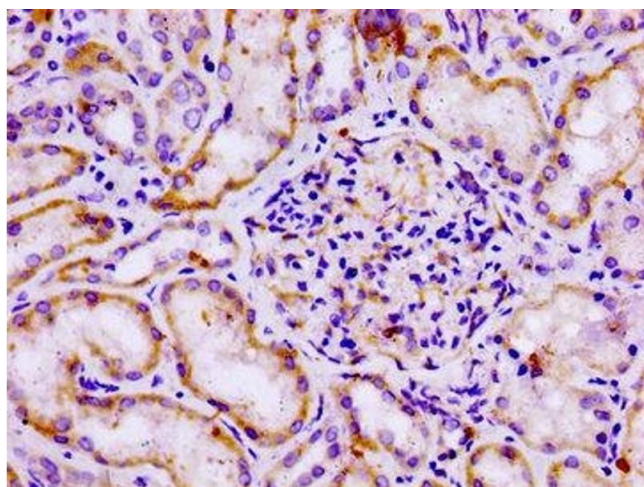
### Immunofluorescence

**Image 1.** Immunofluorescence staining of Hela cells with ABIN7153319 at 1:66, counter-stained with DAPI. The cells were fixed in 4% formaldehyde, permeabilized using 0.2% Triton X-100 and blocked in 10% normal Goat Serum. The cells were then incubated with the antibody overnight at 4°C. The secondary antibody was Alexa Fluor 488-conjugated AffiniPure Goat Anti-Rabbit IgG(H+L).



### Western Blotting

**Image 2.** Western Blot Positive WB detected in: K562 whole cell lysate All lanes: GPR12 antibody at 2 µg/mL Secondary Goat polyclonal to rabbit IgG at 1/50000 dilution Predicted band size: 37 kDa Observed band size: 37 kDa



### Immunohistochemistry

**Image 3.** IHC image of ABIN7153319 diluted at 1:100 and staining in paraffin-embedded human kidney tissue performed on a Leica Bond™ system. After dewaxing and hydration, antigen retrieval was mediated by high pressure in a citrate buffer (pH 6.0). Section was blocked with 10% normal goat serum 30min at RT. Then primary antibody (1% BSA) was incubated at 4°C overnight. The primary is detected by a biotinylated secondary antibody and visualized using an HRP conjugated SP system.