

Datasheet for ABIN7153323  
**anti-GPR143 antibody (AA 314-404)**[Go to Product page](#)

## 1 Image

## Overview

Quantity:	100 µg
Target:	GPR143
Binding Specificity:	AA 314-404
Reactivity:	Human
Host:	Rabbit
Clonality:	Polyclonal
Conjugate:	This GPR143 antibody is un-conjugated
Application:	Western Blotting (WB), ELISA

## Product Details

Immunogen:	Recombinant Human G-protein coupled receptor 143 protein (314-404AA)
Isotype:	IgG
Cross-Reactivity:	Human, Rat
Purification:	>95%, Protein G purified

## Target Details

Target:	GPR143
Alternative Name:	GPR143 ( <a href="#">GPR143 Products</a> )
Background:	Background: Receptor for tyrosine, L-DOPA and dopamine. After binding to L-DOPA, stimulates Ca(2+) influx into the cytoplasm, increases secretion of the neurotrophic factor SERPINF1 and

## Target Details

relocalizes beta arrestin at the plasma membrane, this ligand-dependent signaling occurs through a G(q)-mediated pathway in melanocytic cells. Its activity is mediated by G proteins which activate the phosphoinositide signaling pathway. Plays also a role as an intracellular G protein-coupled receptor involved in melanosome biogenesis, organization and transport. Aliases: ALBINISM OCULAR TYPE I antibody, G protein coupled receptor 143 antibody, G-protein coupled receptor 143 antibody, GP143\_HUMAN antibody, GPR143 antibody, MOA1 antibody, NETTLESHIP FALLS TYPE OCULAR ALBINISM antibody, Ocular albinism type 1 protein antibody, Ocular albinism type 1 protein homolog antibody, Ocular albinism1 Nettleship Falls type antibody

UniProt: [P51810](#)

## Application Details

Application Notes: Recommended dilution: WB:1:500-1:5000,

Restrictions: For Research Use only

## Handling

Format: Liquid

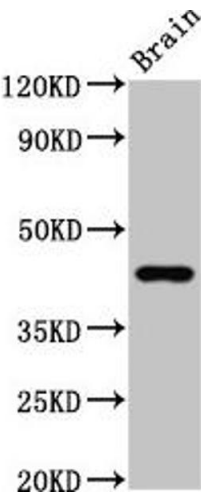
Buffer: Preservative: 0.03 % Proclin 300  
Constituents: 50 % Glycerol, 0.01M PBS, pH 7.4

Preservative: ProClin

Precaution of Use: This product contains ProClin: a POISONOUS AND HAZARDOUS SUBSTANCE which should be handled by trained staff only.

Storage: -20 °C,-80 °C

Storage Comment: Upon receipt, store at -20°C or -80°C. Avoid repeated freeze.



**Western Blotting**

**Image 1.** Western Blot Positive WB detected in: Rat brain tissue All lanes: GPR14 antibody at 3.7 µg/mL Secondary Goat polyclonal to rabbit IgG at 1/50000 dilution Predicted band size: 44 kDa Observed band size: 44 kDa