

Datasheet for ABIN7153327  
**anti-GPR161 antibody (AA 1-28)**[Go to Product page](#)

## 2 Images

## Overview

Quantity:	100 µg
Target:	GPR161
Binding Specificity:	AA 1-28
Reactivity:	Human
Host:	Rabbit
Clonality:	Polyclonal
Conjugate:	This GPR161 antibody is un-conjugated
Application:	ELISA, Western Blotting (WB), Immunofluorescence (IF)

## Product Details

Immunogen:	Recombinant Human G-protein coupled receptor 161 protein (1-28AA)
Isotype:	IgG
Cross-Reactivity:	Human
Purification:	>95%, Protein G purified

## Target Details

Target:	GPR161
Alternative Name:	GPR161 ( <a href="#">GPR161 Products</a> )
Background:	Background: Key negative regulator of Shh signaling, which promotes the processing of GLI3 into GLI3R during neural tube development. Recruited by TULP3 and the IFT-A complex to

## Target Details

primary cilia and acts as a regulator of the PKA-dependent basal repression machinery in Shh signaling by increasing cAMP levels, leading to promote the PKA-dependent processing of GLI3 into GLI3R and repress the Shh signaling. In presence of SHH, it is removed from primary cilia and is internalized into recycling endosomes, preventing its activity and allowing activation of the Shh signaling. Its ligand is unknown (By similarity).

Aliases: GPR161 antibody, G-protein coupled receptor 161 antibody, G-protein coupled receptor RE2 antibody

UniProt: [Q8N6U8](#)

Pathways: [cAMP Metabolic Process](#)

## Application Details

Application Notes: Recommended dilution: WB:1:1000-1:5000, IF:1:50-1:200,

Restrictions: For Research Use only

## Handling

Format: Liquid

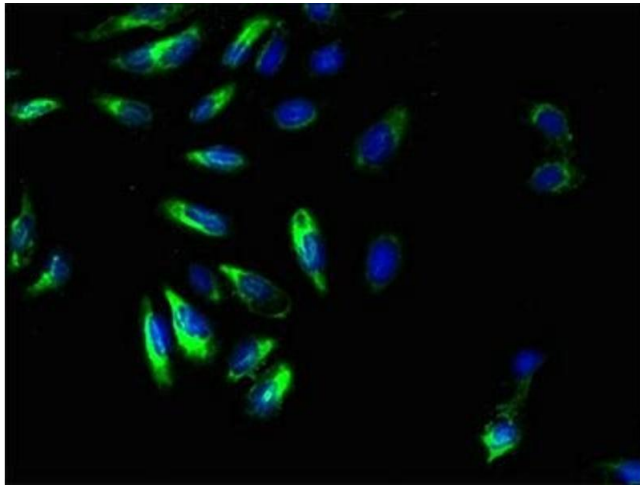
Buffer: Preservative: 0.03 % Proclin 300  
Constituents: 50 % Glycerol, 0.01M PBS, PH 7.4

Preservative: ProClin

Precaution of Use: This product contains ProClin: a POISONOUS AND HAZARDOUS SUBSTANCE which should be handled by trained staff only.

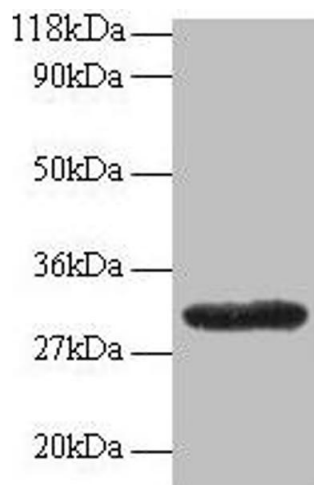
Storage: -20 °C,-80 °C

Storage Comment: Upon receipt, store at -20°C or -80°C. Avoid repeated freeze.



#### Immunofluorescence

**Image 1.** Immunofluorescent analysis of HeLa cells using ABIN7153327 at dilution of 1:100 and Alexa Fluor 488-conjugated AffiniPure Goat Anti-Rabbit IgG(H+L)



#### Western Blotting

**Image 2.** Western blot All lanes: GPR161 antibody at 2  $\mu$ g/mL + EC109 whole cell lysate Secondary Goat polyclonal to rabbit IgG at 1/15000 dilution Predicted band size: 59, 46, 44, 50, 47, 61 kDa Observed band size: 30 kDa