

Datasheet for ABIN7153343  
**anti-GPR39 antibody (AA 345-453)**[Go to Product page](#)

## 2 Images

## Overview

Quantity:	100 µg
Target:	GPR39
Binding Specificity:	AA 345-453
Reactivity:	Human
Host:	Rabbit
Clonality:	Polyclonal
Conjugate:	This GPR39 antibody is un-conjugated
Application:	ELISA, Immunohistochemistry (IHC), Immunofluorescence (IF)

## Product Details

Immunogen:	Recombinant Human G-protein coupled receptor 39 protein (345-453AA)
Isotype:	IgG
Cross-Reactivity:	Human
Purification:	>95%, Protein G purified

## Target Details

Target:	GPR39
Alternative Name:	GPR39 ( <a href="#">GPR39 Products</a> )
Background:	Background: Zn(2+) acts as an agonist. This receptor mediates its action by association with G proteins that activate a phosphatidylinositol-calcium second messenger system. Its effect is

## Target Details

mediated mainly through G(q)-alpha and G(12)/G(13) proteins. Involved in regulation of body weight, gastrointestinal mobility, hormone secretion and cell death (By similarity).

Aliases: G protein coupled receptor GPR39 antibody, G Protein-Coupled Receptor 39 antibody, G-protein coupled receptor 39 antibody, GPR 39 antibody, Gpr39 antibody, GPR39\_HUMAN antibody, MGC149541 antibody

UniProt: [O43194](#)

Pathways: [Positive Regulation of Peptide Hormone Secretion](#), [Carbohydrate Homeostasis](#), [Feeding Behaviour](#)

## Application Details

Application Notes: Recommended dilution: IHC:1:20-1:200, IF:1:200-1:500,

Restrictions: For Research Use only

## Handling

Format: Liquid

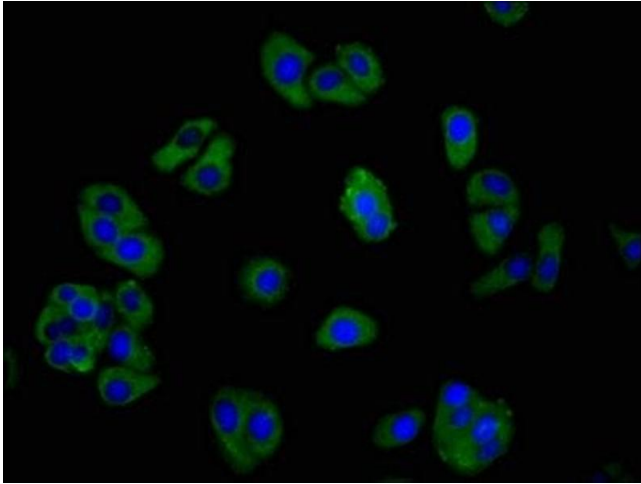
Buffer: Preservative: 0.03 % Proclin 300  
Constituents: 50 % Glycerol, 0.01M PBS, pH 7.4

Preservative: ProClin

Precaution of Use: This product contains ProClin: a POISONOUS AND HAZARDOUS SUBSTANCE which should be handled by trained staff only.

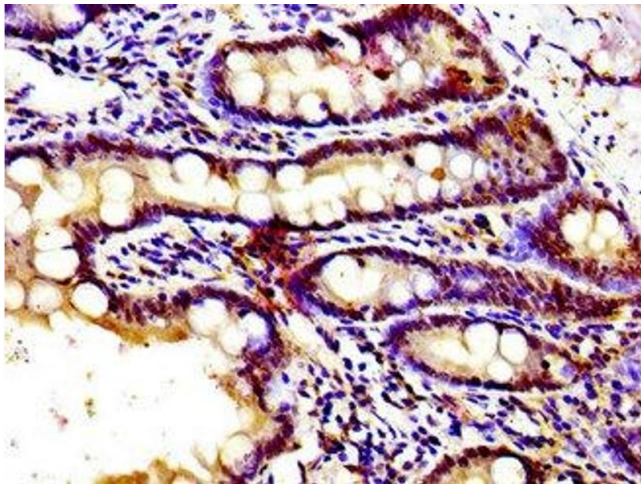
Storage: -20 °C,-80 °C

Storage Comment: Upon receipt, store at -20°C or -80°C. Avoid repeated freeze.



#### Immunofluorescence

**Image 1.** Immunofluorescence staining of HepG2 cells with ABIN7153343 at 1:266, counter-stained with DAPI. The cells were fixed in 4% formaldehyde, permeabilized using 0.2% Triton X-100 and blocked in 10% normal Goat Serum. The cells were then incubated with the antibody overnight at 4°C. The secondary antibody was Alexa Fluor 488-conjugated AffiniPure Goat Anti-Rabbit IgG(H+L).



#### Immunohistochemistry

**Image 2.** Immunohistochemistry of paraffin-embedded human small intestine tissue using ABIN7153343 at dilution of 1:100