

Datasheet for ABIN7153359
anti-Gpr98 antibody (AA 6155-6306)[Go to Product page](#)

1 Image

Overview

Quantity:	100 µg
Target:	Gpr98
Binding Specificity:	AA 6155-6306
Reactivity:	Human
Host:	Rabbit
Clonality:	Polyclonal
Conjugate:	This Gpr98 antibody is un-conjugated
Application:	ELISA, Immunofluorescence (IF)

Product Details

Immunogen:	Recombinant Human G-protein coupled receptor 98 protein (6155-6306AA)
Isotype:	IgG
Cross-Reactivity:	Human
Purification:	>95%, Protein G purified

Target Details

Target:	Gpr98
Alternative Name:	GPR98 (Gpr98 Products)
Background:	Background: Receptor that may have an important role in the development of the central nervous system.

Target Details

Aliases: DKFZp761P0710 antibody, FEB 4 antibody, FEB4 antibody, G protein coupled receptor 98 antibody, G-protein coupled receptor 98 antibody, GPR 98 antibody, GPR98 antibody, GPR98_HUMAN antibody, KIAA0686 antibody, MASS 1 antibody, Monogenic audiogenic seizure susceptibility 1 homolog antibody, Monogenic audiogenic seizure susceptibility protein 1 homolog antibody, USH 2B antibody, USH 2C antibody, USH2B antibody, USH2C antibody, Usher syndrome 2C antibody, Usher syndrome type 2C protein antibody, Usher syndrome type-2C protein antibody, Very large G protein coupled receptor antibody, Very large G protein coupled receptor 1 antibody, Very large G-protein coupled receptor 1 antibody, VLGR 1 antibody, VLGR 1b antibody, VLGR1 antibody, VLGR1b antibody

UniProt: [Q8WVG9](#)

Pathways: [Sensory Perception of Sound](#)

Application Details

Application Notes: Recommended dilution: IF:1:50-1:200,

Restrictions: For Research Use only

Handling

Format: Liquid

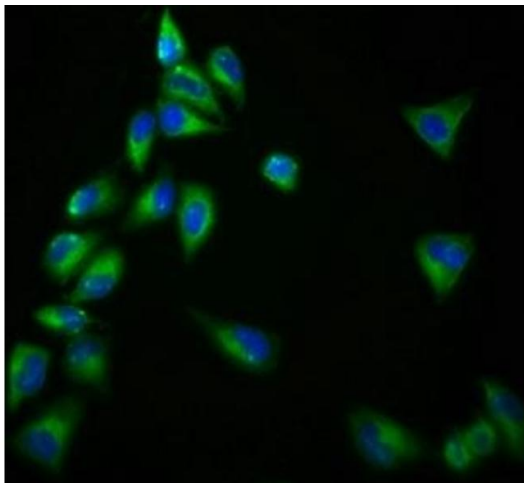
Buffer: Preservative: 0.03 % Proclin 300
Constituents: 50 % Glycerol, 0.01M PBS, pH 7.4

Preservative: ProClin

Precaution of Use: This product contains ProClin: a POISONOUS AND HAZARDOUS SUBSTANCE which should be handled by trained staff only.

Storage: -20 °C,-80 °C

Storage Comment: Upon receipt, store at -20°C or -80°C. Avoid repeated freeze.



Immunofluorescence

Image 1. Immunofluorescence staining of HeLa cells with ABIN7153359 at 1:166, counter-stained with DAPI. The cells were fixed in 4% formaldehyde, permeabilized using 0.2% Triton X-100 and blocked in 10% normal Goat Serum. The cells were then incubated with the antibody overnight at 4°C. The secondary antibody was Alexa Fluor 488-conjugated AffiniPure Goat Anti-Rabbit IgG(H+L).