

Datasheet for ABIN7153367
anti-GPRC6A antibody (AA 403-581)[Go to Product page](#)

4 Images

Overview

Quantity:	100 µg
Target:	GPRC6A
Binding Specificity:	AA 403-581
Reactivity:	Human
Host:	Rabbit
Clonality:	Polyclonal
Conjugate:	This GPRC6A antibody is un-conjugated
Application:	Western Blotting (WB), ELISA, Immunohistochemistry (IHC), Immunofluorescence (IF)

Product Details

Immunogen:	Recombinant Human G-protein coupled receptor family C group 6 member A protein (403-581AA)
Isotype:	IgG
Cross-Reactivity:	Human
Purification:	>95%, Protein G purified

Target Details

Target:	GPRC6A
Alternative Name:	GPRC6A (GPRC6A Products)
Background:	Background: Receptor activated by amino acids with a preference for basic amino acids such

Target Details

as L-Lys, L-Arg and L-ornithine but also by small and polar amino acids. The L-alpha amino acids respond is augmented by divalent cations Ca(2+) and Mg(2+). Activated by extracellular calcium and osteocalcin. Seems to act through a G(q)/G(11) and G(i)-coupled pathway.

Mediates the non-genomic effects of androgens in multiple tissue. May coordinate nutritional and hormonal anabolic signals through the sensing of extracellular amino acids, osteocalcin, divalent ions and its responsiveness to anabolic steroids.

Aliases: bA86F4.3 antibody, G protein coupled receptor 33 antibody, G protein coupled receptor family C group 6 member A antibody, G-protein coupled receptor family C group 6 member A antibody, G-protein coupled receptor GPCR33 antibody, GPC6A_HUMAN antibody, GPCR 33 antibody, GPCR 6A antibody, GPCR antibody, GPCR33 antibody, GPCR6A antibody, GPR C6A antibody, GPRC 6A antibody, gprc6a antibody, hGPCR 33 antibody, hGPCR33 antibody, hGPCR6A antibody, OTTHUMP00000017075 antibody, Predicted with SOSUI analysis antibody, seven transmembrane helix receptor antibody

UniProt: [Q5T6X5](#)

Application Details

Application Notes: Recommended dilution: WB:1:1000-1:5000, IHC:1:200-1:500, IF:1:50-1:200,

Restrictions: For Research Use only

Handling

Format: Liquid

Buffer: Preservative: 0.03 % Proclin 300
Constituents: 50 % Glycerol, 0.01M PBS, pH 7.4

Preservative: ProClin

Precaution of Use: This product contains ProClin: a POISONOUS AND HAZARDOUS SUBSTANCE which should be handled by trained staff only.

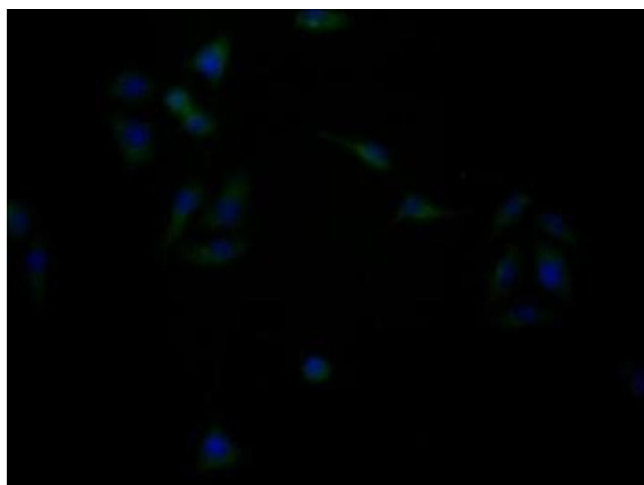
Storage: -20 °C,-80 °C

Storage Comment: Upon receipt, store at -20°C or -80°C. Avoid repeated freeze.



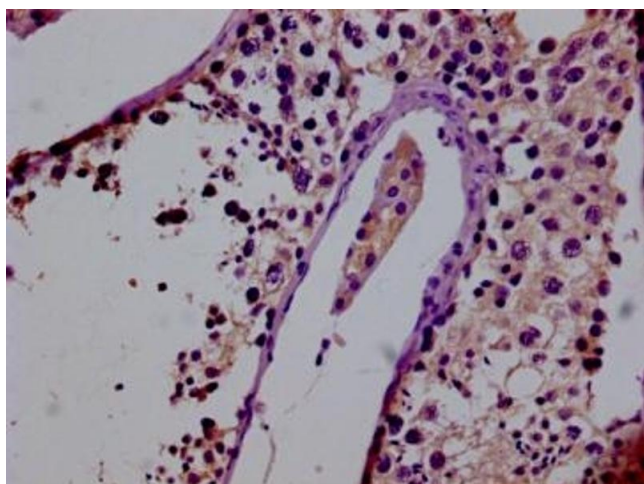
Western Blotting

Image 1. Western Blot Positive WB detected in: HepG2 whole cell lysate, Hela whole cell lysate All lanes: GPRC6A antibody at 4.7 µg/mL Secondary Goat polyclonal to rabbit IgG at 1/50000 dilution Predicted band size: 105, 85, 97 kDa Observed band size: 97 kDa



Immunofluorescence

Image 2. Immunofluorescence staining of HepG2 cells with ABIN7153367 at 1:133, counter-stained with DAPI. The cells were fixed in 4% formaldehyde, permeabilized using 0.2% Triton X-100 and blocked in 10% normal Goat Serum. The cells were then incubated with the antibody overnight at 4°C. The secondary antibody was Alexa Fluor 488-conjugated AffiniPure Goat Anti-Rabbit IgG(H+L).



Immunohistochemistry

Image 3. IHC image of ABIN7153367 diluted at 1:400 and staining in paraffin-embedded human testis tissue performed on a Leica Bond™ system. After dewaxing and hydration, antigen retrieval was mediated by high pressure in a citrate buffer (pH 6.0). Section was blocked with 10% normal goat serum 30min at RT. Then primary antibody (1% BSA) was incubated at 4°C overnight. The primary is detected by a biotinylated secondary antibody and visualized using an HRP conjugated SP system.

Please check the [product details page](#) for more images. Overall 4 images are available for ABIN7153367.