

Datasheet for ABIN7153371
anti-GPSM1 antibody (AA 60-300)[Go to Product page](#)

1 Image

Overview

Quantity:	100 µg
Target:	GPSM1
Binding Specificity:	AA 60-300
Reactivity:	Human
Host:	Rabbit
Clonality:	Polyclonal
Conjugate:	This GPSM1 antibody is un-conjugated
Application:	ELISA, Immunofluorescence (IF)

Product Details

Immunogen:	Recombinant Human G-protein-signaling modulator 1 protein (60-300AA)
Isotype:	IgG
Cross-Reactivity:	Human
Purification:	>95%, Protein G purified

Target Details

Target:	GPSM1
Alternative Name:	GPSM1 (GPSM1 Products)
Background:	Background: Guanine nucleotide dissociation inhibitor (GDI) which functions as a receptor-independent activator of heterotrimeric G-protein signaling. Keeps G(i/o) alpha subunit in its

Target Details

GDP-bound form thus uncoupling heterotrimeric G-proteins signaling from G protein-coupled receptors. Controls spindle orientation and asymmetric cell fate of cerebral cortical progenitors. May also be involved in macroautophagy in intestinal cells. May play a role in drug addiction. Aliases: Activator of G-protein signaling 3 antibody, AGS3 antibody, AGS3 homolog antibody, C10a antibody, G protein signaling modulator 1 (AGS3 like, C. elegans) antibody, G-protein-signaling modulator 1 antibody, GPSM1 antibody, GPSM1_HUMAN antibody

UniProt: [Q86YR5](#)

Pathways: [Regulation of G-Protein Coupled Receptor Protein Signaling](#)

Application Details

Application Notes: Recommended dilution: IF:1:50-1:200,

Restrictions: For Research Use only

Handling

Format: Liquid

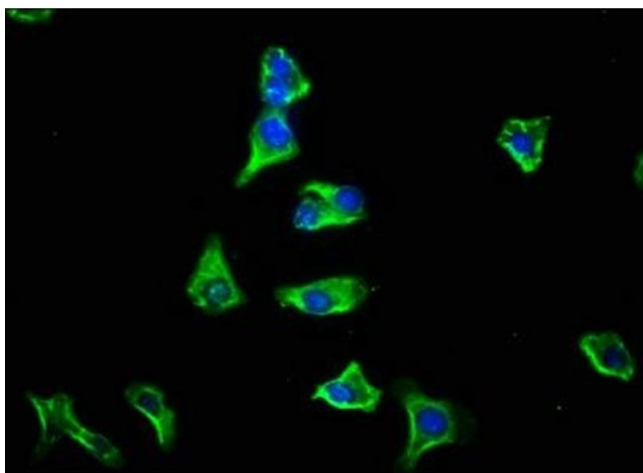
Buffer: Preservative: 0.03 % Proclin 300
Constituents: 50 % Glycerol, 0.01M PBS, PH 7.4

Preservative: ProClin

Precaution of Use: This product contains ProClin: a POISONOUS AND HAZARDOUS SUBSTANCE which should be handled by trained staff only.

Storage: -20 °C,-80 °C

Storage Comment: Upon receipt, store at -20°C or -80°C. Avoid repeated freeze.



Immunofluorescence

Image 1. Immunofluorescence staining of HepG2 cells with ABIN7153371 at 1:133, counter-stained with DAPI. The cells were fixed in 4 % formaldehyde, permeabilized using 0.2 % Triton X-100 and blocked in 10 % normal Goat Serum. The cells were then incubated with the antibody overnight at 4 °C. The secondary antibody was Alexa Fluor 488-conjugated AffiniPure Goat Anti-Rabbit IgG(H+L).