



[Go to Product page](#)

Datasheet for ABIN7153375  
**anti-GPSM3 antibody (AA 1-160)**

1 Image

### Overview

Quantity:	100 µg
Target:	GPSM3
Binding Specificity:	AA 1-160
Reactivity:	Human
Host:	Rabbit
Clonality:	Polyclonal
Conjugate:	This GPSM3 antibody is un-conjugated
Application:	ELISA, Immunohistochemistry (IHC)

### Product Details

Immunogen:	Recombinant Human G-protein-signaling modulator 3 protein (1-160AA)
Isotype:	IgG
Cross-Reactivity:	Human
Purification:	>95%, Protein G purified

### Target Details

Target:	GPSM3
Alternative Name:	GPSM3 ( <a href="#">GPSM3 Products</a> )
Background:	Background: Interacts with subunit of G(i) alpha proteins and regulates the activation of G(i) alpha proteins.

## Target Details

Aliases: Activator of G-protein signaling 4 antibody, AGS4 antibody, C6orf9 antibody, G protein signalling modulator 3 (AGS3 like, C. elegans) antibody, G-protein signaling modulator 3 (AGS3-like, C. elegans) antibody, G-protein-signaling modulator 3 antibody, G18 antibody, G18.1a antibody, G18.1b antibody, G18.2 antibody, Gpsm3 antibody, GPSM3\_HUMAN antibody, NG1 antibody, OTTHUMP00000029351 antibody, Protein G18 antibody

UniProt: [Q9Y4H4](#)

## Application Details

Application Notes: Recommended dilution: IHC:1:20-1:200,

Restrictions: For Research Use only

## Handling

Format: Liquid

Buffer: Preservative: 0.03 % Proclin 300  
Constituents: 50 % Glycerol, 0.01M PBS, PH 7.4

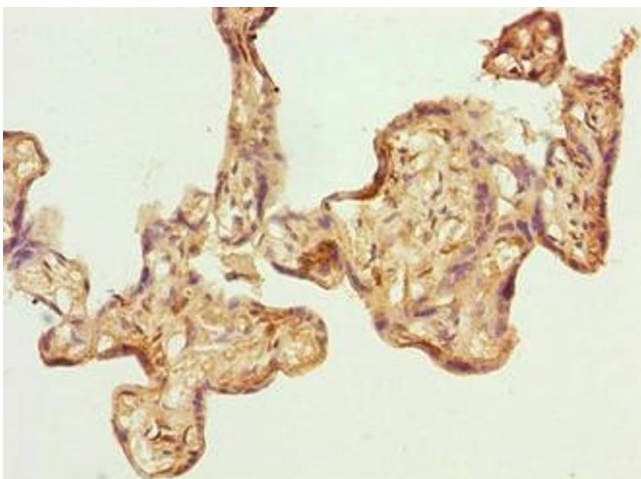
Preservative: ProClin

Precaution of Use: This product contains ProClin: a POISONOUS AND HAZARDOUS SUBSTANCE which should be handled by trained staff only.

Storage: -20 °C,-80 °C

Storage Comment: Upon receipt, store at -20°C or -80°C. Avoid repeated freeze.

## Images



### Immunohistochemistry

**Image 1.** Immunohistochemistry of paraffin-embedded human placenta tissue using ABIN7153375 at dilution of 1:100