

Datasheet for ABIN7153389
anti-Cyclin D2 antibody (AA 1-289)

6 Images

[Go to Product page](#)

Overview

Quantity:	100 µL
Target:	Cyclin D2 (CCND2)
Binding Specificity:	AA 1-289
Reactivity:	Human
Host:	Rabbit
Clonality:	Polyclonal
Conjugate:	This Cyclin D2 antibody is un-conjugated
Application:	Western Blotting (WB), ELISA, Immunohistochemistry (IHC), Immunofluorescence (IF)

Product Details

Immunogen:	Recombinant Human G1/S-specific cyclin-D2 protein (1-289AA)
Isotype:	IgG
Cross-Reactivity:	Human
Purification:	Antigen Affinity purified

Target Details

Target:	Cyclin D2 (CCND2)
Alternative Name:	CCND2 (CCND2 Products)
Background:	Background: Regulatory component of the cyclin D2-CDK4 (DC) complex that phosphorylates and inhibits members of the retinoblastoma (RB) protein family including RB1 and regulates the

Target Details

cell-cycle during G1/S transition. Phosphorylation of RB1 allows dissociation of the transcription factor E2F from the RB/E2F complex and the subsequent transcription of E2F target genes which are responsible for the progression through the G1 phase.

Hypophosphorylates RB1 in early G1 phase. Cyclin D-CDK4 complexes are major integrators of various mitogenic and antimitogenic signals. Also substrate for SMAD3, phosphorylating SMAD3 in a cell-cycle-dependent manner and repressing its transcriptional activity. Component of the ternary complex, cyclin D2/CDK4/CDKN1B, required for nuclear translocation and activity of the cyclin D-CDK4 complex.

Aliases: CCND 2 antibody, ccnd2 antibody, CCND2_HUMAN antibody, CyclinD2 antibody, G1/S specific cyclin D2 antibody, G1/S-specific cyclin-D2 antibody, KIAK0002 antibody, MGC102758 antibody, MPPH3 antibody

UniProt: [P30279](#)

Pathways: [Cell Division Cycle, Mitotic G1-G1/S Phases](#)

Application Details

Application Notes: Recommended dilution: WB:1:500-1:5000, IHC:1:20-1:500, IF:1:50-1:200,

Restrictions: For Research Use only

Handling

Format: Liquid

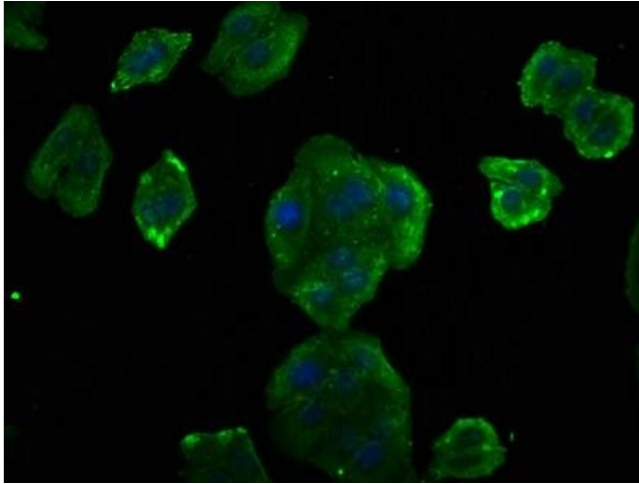
Buffer: PBS with 0.02 % sodium azide, 50 % glycerol, pH 7.3.

Preservative: Sodium azide

Precaution of Use: This product contains Sodium azide: a POISONOUS AND HAZARDOUS SUBSTANCE which should be handled by trained staff only.

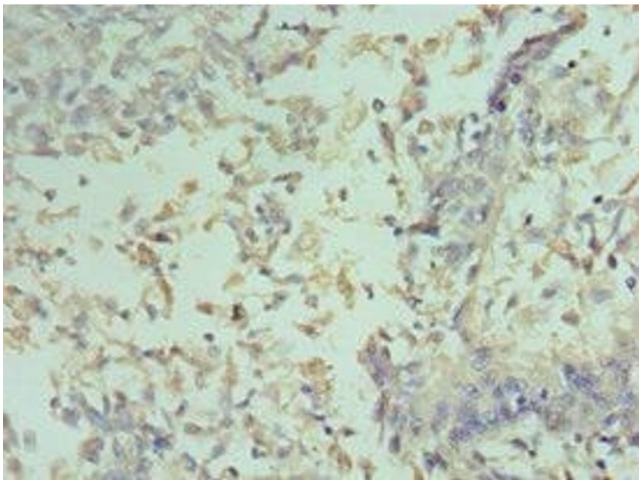
Storage: -20 °C,-80 °C

Storage Comment: Upon receipt, store at -20°C or -80°C. Avoid repeated freeze.



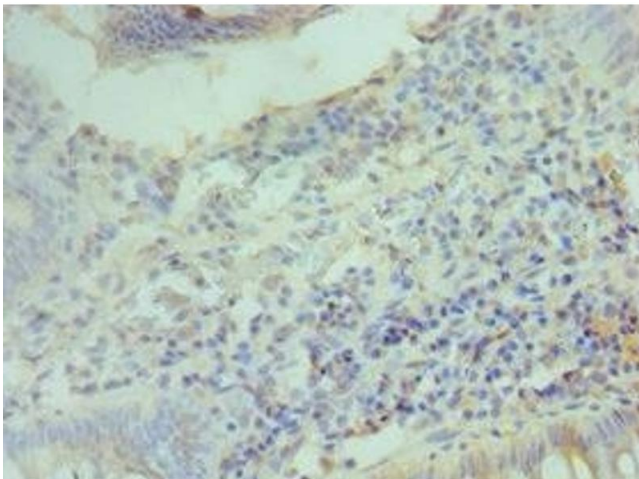
Immunofluorescence

Image 1. Immunofluorescence staining of HepG2 cells with ABIN7153389 at 1:75, counter-stained with DAPI. The cells were fixed in 4 % formaldehyde, permeabilized using 0.2 % Triton X-100 and blocked in 10 % normal Goat Serum. The cells were then incubated with the antibody overnight at 4 °C. The secondary antibody was Alexa Fluor 488-conjugated AffiniPure Goat Anti-Rabbit IgG(H+L).



Immunohistochemistry

Image 2. Immunohistochemistry of paraffin-embedded human cervical cancer using ABIN7153389 at dilution of 1:100



Immunohistochemistry

Image 3. Immunohistochemistry of paraffin-embedded human colon cancer using ABIN7153389 at dilution of 1:100

Please check the [product details page](#) for more images. Overall 6 images are available for ABIN7153389.