



[Go to Product page](#)

Datasheet for ABIN7153399

anti-Cyclin E2 antibody (AA 255-404)

2 Images

Overview

Quantity:	100 µL
Target:	Cyclin E2 (CCNE2)
Binding Specificity:	AA 255-404
Reactivity:	Human
Host:	Rabbit
Clonality:	Polyclonal
Conjugate:	This Cyclin E2 antibody is un-conjugated
Application:	Western Blotting (WB), ELISA, Immunohistochemistry (IHC)

Product Details

Immunogen:	Recombinant Human G1/S-specific cyclin-E2 protein (255-404AA)
Isotype:	IgG
Cross-Reactivity:	Human
Purification:	Antigen Affinity Purified

Target Details

Target:	Cyclin E2 (CCNE2)
Alternative Name:	CCNE2 (CCNE2 Products)
Background:	Background: Essential for the control of the cell cycle at the late G1 and early S phase. Aliases: CCNE2 antibody, G1/S-specific cyclin-E2 antibody

Target Details

UniProt: [O96020](#)

Pathways: [Cell Division Cycle, Mitotic G1-G1/S Phases](#)

Application Details

Application Notes: Recommended dilution: WB:1:1000-1:5000, IHC:1:20-1:200,

Restrictions: For Research Use only

Handling

Format: Liquid

Buffer: PBS with 0.02 % sodium azide, 50 % glycerol, pH 7.3.

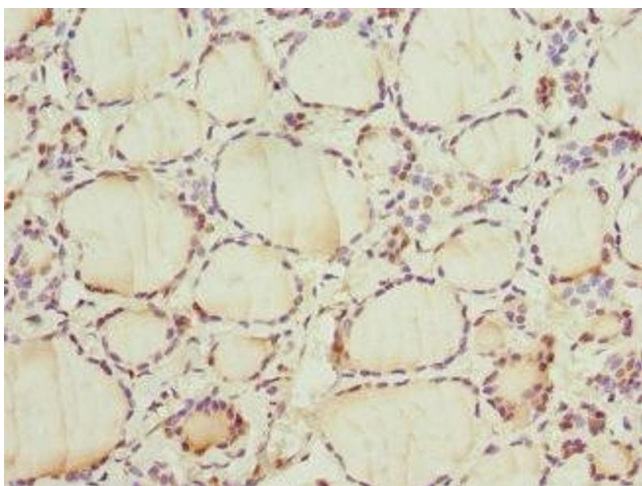
Preservative: Sodium azide

Precaution of Use: This product contains Sodium azide: a POISONOUS AND HAZARDOUS SUBSTANCE which should be handled by trained staff only.

Storage: -20 °C,-80 °C

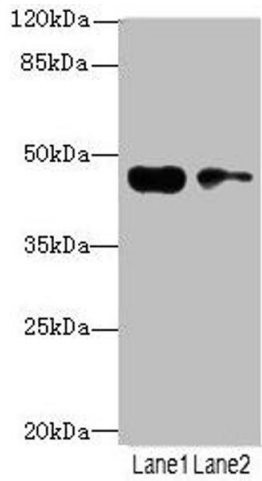
Storage Comment: Upon receipt, store at -20°C or -80°C. Avoid repeated freeze.

Images



Immunohistochemistry

Image 1. Immunohistochemistry of paraffin-embedded human thyroid tissue using ABIN7153399 at dilution of 1:100



Western Blotting

Image 2. Western blot All lanes: CCNE2antibody at 3.25 μ g/mL Lane 1: Jurkat whole cell lysate Lane 2: HeLa whole cell lysate Secondary Goat polyclonal to rabbit IgG at 1/10000 dilution Predicted band size: 47, 42 kDa Observed band size: 47 kDa