

Datasheet for ABIN7153439

anti-Galectin 3 antibody

3 Images



[Go to Product page](#)

Overview

Quantity:	100 µg
Target:	Galectin 3 (LGALS3)
Reactivity:	Human
Host:	Mouse
Clonality:	Monoclonal
Conjugate:	This Galectin 3 antibody is un-conjugated
Application:	Western Blotting (WB), Immunohistochemistry (IHC), ELISA

Product Details

Immunogen:	Recombinant Human Galectin 3(GAL-3)
Clone:	3F2E2
Isotype:	IgG2b
Cross-Reactivity:	Human, Mouse
Purification:	Protein G purified

Target Details

Target:	Galectin 3 (LGALS3)
Alternative Name:	LGALS3 (LGALS3 Products)
Target Type:	Chemical
Background:	Background: Galactose-specific lectin which binds IgE. May mediate with the alpha-3, beta-1

Target Details

integrin the stimulation by CSPG4 of endothelial cells migration. Together with DMBT1, required for terminal differentiation of columnar epithelial cells during early embryogenesis By similarity. In the nucleus: acts as a pre-mRNA splicing factor. Involved in acute inflammatory responses including neutrophil activation and adhesion, chemoattraction of monocytes macrophages, opsonization of apoptotic neutrophils, and activation of mast cells.

Aliases: Lectin, galactoside-binding, soluble, 3, LGALS3, CBP35, GAL3, GALBP, GALIG, LGALS2, MAC2, Galectin 3

UniProt: [P17931](#)

Pathways: [RTK Signaling](#)

Application Details

Application Notes: Recommended dilution: WB:1:500-1:5000, IHC:1:50-1:500,

Restrictions: For Research Use only

Handling

Format: Liquid

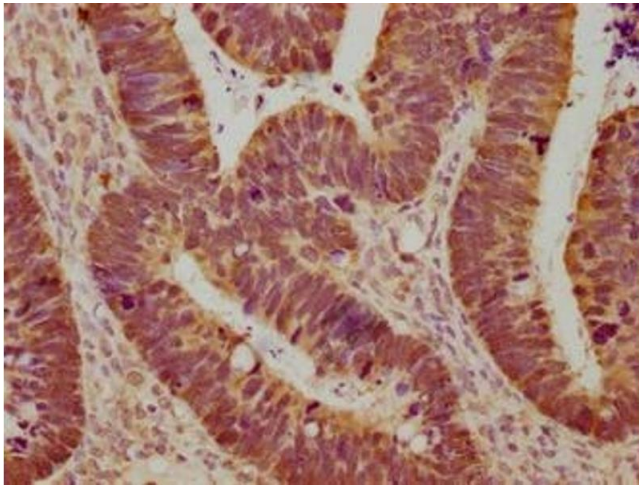
Buffer: Preservative: 0.03 % Proclin 300
Constituents: 50 % Glycerol, 0.01M PBS, PH 7.4

Preservative: ProClin

Precaution of Use: This product contains ProClin: a POISONOUS AND HAZARDOUS SUBSTANCE which should be handled by trained staff only.

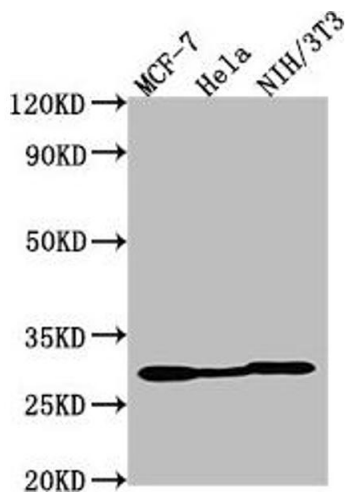
Storage: -20 °C,-80 °C

Storage Comment: Upon receipt, store at -20°C or -80°C. Avoid repeated freeze.



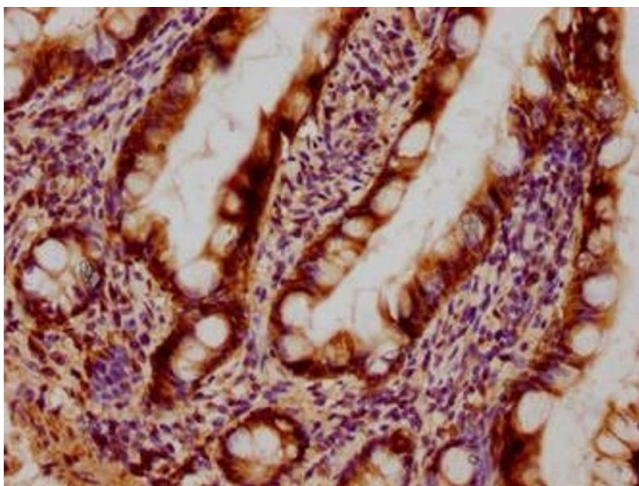
Immunohistochemistry

Image 1. Immunohistochemical of paraffin-embedded human ovarian cancer using ABIN7153439 at dilution of 1:100



Western Blotting

Image 2. Western Blot Positive WB detected in: MCF-7 whole cell lysate, HeLa whole cell lysate, NIH/3T3 whole cell lysate All lanes: LGALS3 antibody at 1:2000 Secondary Goat polyclonal to Mouse IgG at 1/50000 dilution Predicted band size: 27 kDa Observed band size: 27 kDa



Immunohistochemistry

Image 3. Immunohistochemical of paraffin-embedded human small intestinal tissue using ABIN7153439 at dilution of 1:100