

Datasheet for ABIN7153457
anti-GAL4 antibody (AA 1-323)[Go to Product page](#)

2 Images

Overview

Quantity:	100 µL
Target:	GAL4 (LGALS4)
Binding Specificity:	AA 1-323
Reactivity:	Human
Host:	Rabbit
Clonality:	Polyclonal
Conjugate:	This GAL4 antibody is un-conjugated
Application:	Immunohistochemistry (IHC), ELISA, Immunofluorescence (IF)

Product Details

Immunogen:	Recombinant Human Galectin-4 protein (1-323AA)
Isotype:	IgG
Cross-Reactivity:	Human
Purification:	Antigen Affinity Purified

Target Details

Target:	GAL4 (LGALS4)
Alternative Name:	LGALS4 (LGALS4 Products)
Background:	Background: Galectin that binds lactose and a related range of sugars. May be involved in the assembly of adherens junctions.

Target Details

Aliases: Antigen NY CO 27 antibody, Antigen NY-CO-27 antibody, Antigen NYCO27 antibody, GAL 4 antibody, Gal-4 antibody, GAL4 antibody, Galectin 4 antibody, Galectin-4 antibody, Galectin4 antibody, Homo sapiens galectin4 mRNA complete cds antibody, L 36 lactose binding protein antibody, L-36 lactose-binding protein antibody, L36 lactose binding protein antibody, L36LBP antibody, Lactose binding lectin 4 antibody, Lactose-binding lectin 4 antibody, Lectin galactoside binding soluble 4 antibody, LEG4_HUMAN antibody, LGALS4 antibody

UniProt: [P56470](#)

Application Details

Application Notes: Recommended dilution: IHC:1:20-1:200, IF:1:50-1:200,

Restrictions: For Research Use only

Handling

Format: Liquid

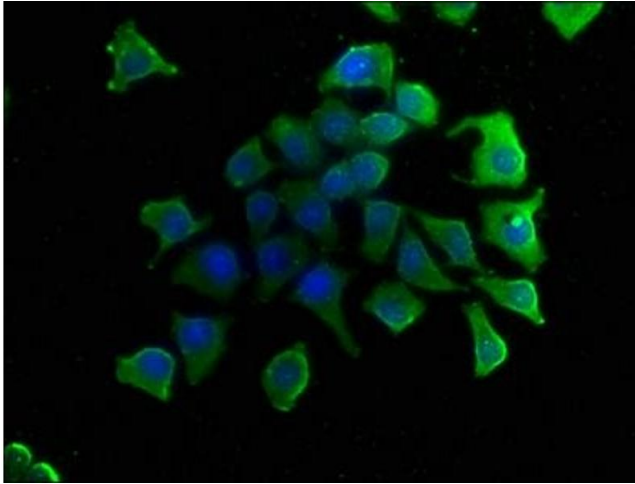
Buffer: Preservative: 0.03 % Proclin 300
Constituents: 50 % Glycerol, 0.01M PBS, pH 7.4

Preservative: ProClin

Precaution of Use: This product contains ProClin: a POISONOUS AND HAZARDOUS SUBSTANCE which should be handled by trained staff only.

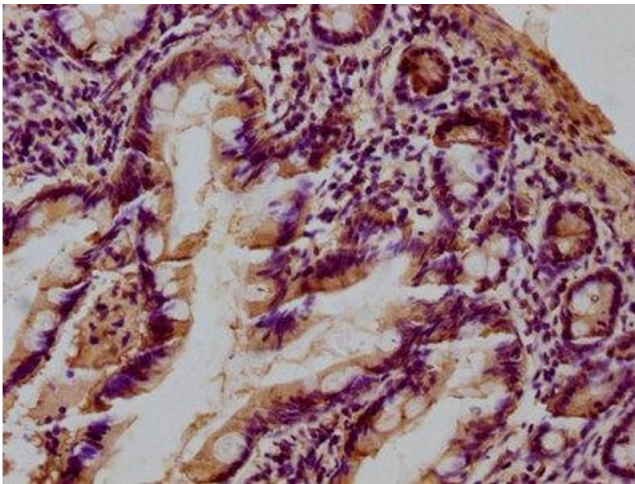
Storage: -20 °C, -80 °C

Storage Comment: Upon receipt, store at -20°C or -80°C. Avoid repeated freeze.



Immunofluorescence

Image 1. Immunofluorescence staining of A549 cells with ABIN7153457 at 1:50, counter-stained with DAPI. The cells were fixed in 4 % formaldehyde, permeabilized using 0.2 % Triton X-100 and blocked in 10 % normal Goat Serum. The cells were then incubated with the antibody overnight at 4 °C. The secondary antibody was Alexa Fluor 488-conjugated AffiniPure Goat Anti-Rabbit IgG(H+L).



Immunohistochemistry

Image 2. IHC image of ABIN7153457 diluted at 1:100 and staining in paraffin-embedded human small intestine tissue performed on a Leica Bond™ system. After dewaxing and hydration, antigen retrieval was mediated by high pressure in a citrate buffer (pH 6.0). Section was blocked with 10 % normal goat serum 30 min at RT. Then primary antibody (1 % BSA) was incubated at 4 °C overnight. The primary is detected by a biotinylated secondary antibody and visualized using an HRP conjugated SP system.