



[Go to Product page](#)

Datasheet for ABIN7153489  
**anti-GABRA6 antibody (AA 20-242)**

1 Image

### Overview

Quantity:	100 µg
Target:	GABRA6
Binding Specificity:	AA 20-242
Reactivity:	Human
Host:	Rabbit
Clonality:	Polyclonal
Conjugate:	This GABRA6 antibody is un-conjugated
Application:	ELISA, Immunohistochemistry (IHC)

### Product Details

Immunogen:	Recombinant Human Gamma-aminobutyric acid receptor subunit alpha-6 protein (20-242AA)
Isotype:	IgG
Cross-Reactivity:	Human
Purification:	>95%, Protein G purified

### Target Details

Target:	GABRA6
Alternative Name:	GABRA6 ( <a href="#">GABRA6 Products</a> )
Background:	Background: GABA, the major inhibitory neurotransmitter in the vertebrate brain, mediates neuronal inhibition by binding to the GABA/benzodiazepine receptor and opening an integral

## Target Details

---

chloride channel.

Aliases: GABA A antibody, GABA A Receptor alpha 6 polypeptide antibody, GABA A receptor alpha 6 antibody, GABA A receptor subunit alpha 6 antibody, GABA subunit A receptor alpha 6 antibody, GABA(A) receptor subunit alpha-6 antibody, GABRA 6 antibody, GABRA6 antibody, Gamma aminobutyric acid A receptor alpha 6 antibody, Gamma aminobutyric acid GABA A receptor alpha 6 antibody, Gamma aminobutyric acid receptor subunit alpha 6 antibody, Gamma-aminobutyric acid receptor subunit alpha-6 antibody, GBRA6\_HUMAN antibody, MGC116903 antibody, MGC116904 antibody

---

UniProt: [Q16445](#)

---

Pathways: [Synaptic Membrane](#)

## Application Details

---

Application Notes: Recommended dilution: IHC:1:20-1:200,

---

Restrictions: For Research Use only

## Handling

---

Format: Liquid

---

Buffer: Preservative: 0.03 % Proclin 300  
Constituents: 50 % Glycerol, 0.01M PBS, PH 7.4

---

Preservative: ProClin

---

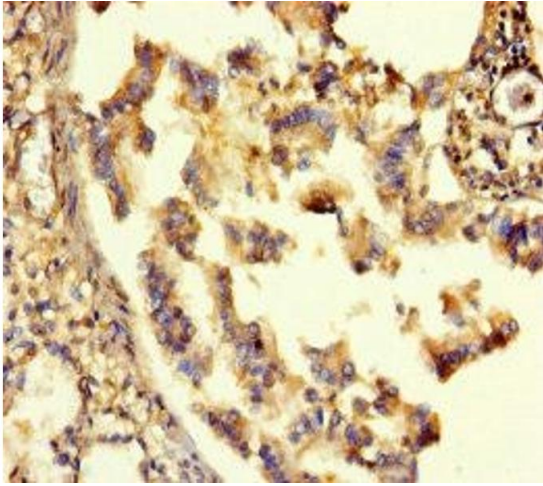
Precaution of Use: This product contains ProClin: a POISONOUS AND HAZARDOUS SUBSTANCE which should be handled by trained staff only.

---

Storage: -20 °C,-80 °C

---

Storage Comment: Upon receipt, store at -20°C or -80°C. Avoid repeated freeze.



### Immunohistochemistry

**Image 1.** Immunohistochemistry of paraffin-embedded human lung tissue using ABIN7153489 at dilution of 1:100