



[Go to Product page](#)

Datasheet for ABIN7153515

anti-GABARAPL1 antibody (AA 1-117)

2 Images

Overview

Quantity:	100 µL
Target:	GABARAPL1
Binding Specificity:	AA 1-117
Reactivity:	Human
Host:	Rabbit
Clonality:	Polyclonal
Conjugate:	This GABARAPL1 antibody is un-conjugated
Application:	ELISA, Immunohistochemistry (IHC)

Product Details

Immunogen:	Recombinant Human Gamma-aminobutyric acid receptor-associated protein-like 1 protein (1-117AA)
Isotype:	IgG
Cross-Reactivity:	Human
Purification:	Antigen Affinity Purified

Target Details

Target:	GABARAPL1
Alternative Name:	GABARAPL1 (GABARAPL1 Products)
Background:	Background: Ubiquitin-like modifier that increases cell-surface expression of kappa-type opioid

Target Details

receptor through facilitating anterograde intracellular trafficking of the receptor. Involved in formation of autophagosomal vacuoles. Whereas LC3s are involved in elongation of the phagophore membrane, the GABARAP/GATE-16 subfamily is essential for a later stage in autophagosome maturation.

Aliases: APG8 like antibody, APG8L antibody, ATG8 antibody, ATG8B antibody, ATG8L antibody, Early estrogen regulated protein antibody, Early estrogen-regulated protein antibody, GABA antibody, GABA(A) receptor associated protein like 1 antibody, GABA(A) receptor-associated protein-like 1 antibody, GABARAPL1 a antibody, GABARAPL1 antibody, Gamma aminobutyric acid receptor associated protein like 1 antibody, Gamma-aminobutyric acid receptor-associated protein-like 1 antibody, GBRL1_HUMAN antibody, GEC 1 antibody, GEC-1 antibody, GEC1 antibody, Glandular epithelial cell protein 1 antibody

UniProt: [Q9H0R8](#)

Pathways: [Autophagy](#)

Application Details

Application Notes: Recommended dilution: IHC:1:20-1:200,

Restrictions: For Research Use only

Handling

Format: Liquid

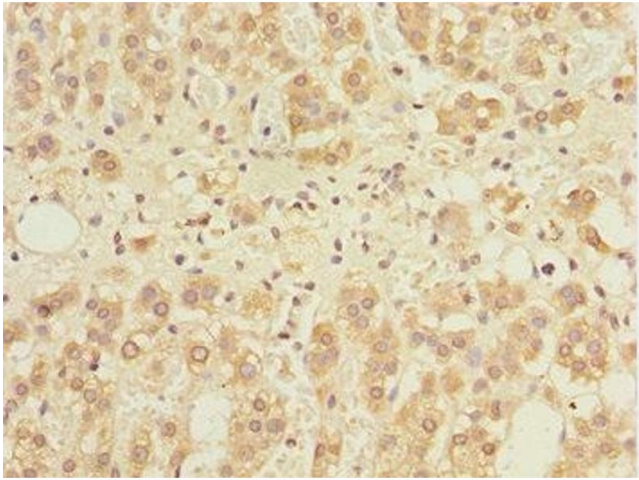
Buffer: PBS with 0.02 % sodium azide, 50 % glycerol, pH 7.3.

Preservative: Sodium azide

Precaution of Use: This product contains Sodium azide: a POISONOUS AND HAZARDOUS SUBSTANCE which should be handled by trained staff only.

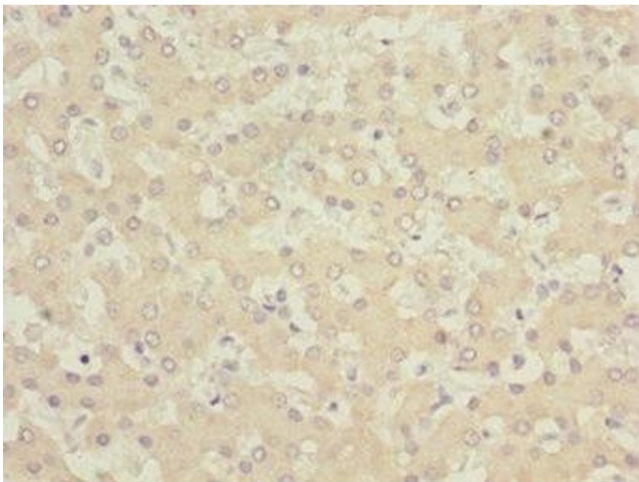
Storage: -20 °C,-80 °C

Storage Comment: Upon receipt, store at -20°C or -80°C. Avoid repeated freeze.



Immunohistochemistry

Image 1. Immunohistochemistry of paraffin-embedded human adrenal gland tissue using ABIN7153515 at dilution of 1:100



Immunohistochemistry

Image 2. Immunohistochemistry of paraffin-embedded human liver tissue using ABIN7153515 at dilution of 1:100