

Datasheet for ABIN7153521
anti-GABARAPL2 antibody (AA 1-117)[Go to Product page](#)

3 Images

Overview

Quantity:	100 µg
Target:	GABARAPL2
Binding Specificity:	AA 1-117
Reactivity:	Human
Host:	Rabbit
Clonality:	Polyclonal
Conjugate:	This GABARAPL2 antibody is un-conjugated
Application:	ELISA, Western Blotting (WB), Immunohistochemistry (IHC)

Product Details

Immunogen:	Recombinant Human Gamma-aminobutyric acid receptor-associated protein-like 2 protein (1-117AA)
Isotype:	IgG
Cross-Reactivity:	Human, Rat
Purification:	>95%, Protein G purified

Target Details

Target:	GABARAPL2
Alternative Name:	GABARAPL2 (GABARAPL2 Products)
Background:	Background: Ubiquitin-like modifier involved in intra-Golgi traffic. Modulates intra-Golgi

Target Details

transport through coupling between NSF activity and SNAREs activation. It first stimulates the ATPase activity of NSF which in turn stimulates the association with GOSR1 (By similarity). Involved in autophagy. Plays a role in mitophagy which contributes to regulate mitochondrial quantity and quality by eliminating the mitochondria to a basal level to fulfill cellular energy requirements and preventing excess ROS production. Whereas LC3s are involved in elongation of the phagophore membrane, the GABARAP/GATE-16 subfamily is essential for a later stage in autophagosome maturation.

Aliases: ATG8 antibody, ATG8C antibody, FLC3A antibody, GABA(A) receptor-associated protein-like 2 antibody, Gabarapl2 antibody, Gamma-aminobutyric acid receptor-associated protein-like 2 antibody, Ganglioside expression factor 2 antibody, GATE-16 antibody, GATE16 antibody, GBRL2_HUMAN antibody, GEF-2 antibody, GEF2 antibody, General protein transport factor p16 antibody, Golgi-associated ATPase enhancer of 16 kDa antibody, MAP1 light chain 3-related protein antibody

UniProt: [P60520](#)

Pathways: [Autophagy](#)

Application Details

Application Notes: Recommended dilution: WB:1:500-1:5000, IHC:1:1000-1:2000,

Restrictions: For Research Use only

Handling

Format: Liquid

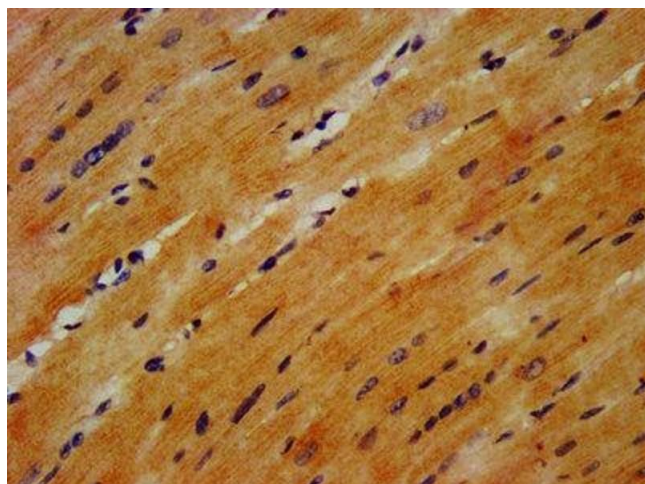
Buffer: Preservative: 0.03 % Proclin 300
Constituents: 50 % Glycerol, 0.01M PBS, PH 7.4

Preservative: ProClin

Precaution of Use: This product contains ProClin: a POISONOUS AND HAZARDOUS SUBSTANCE which should be handled by trained staff only.

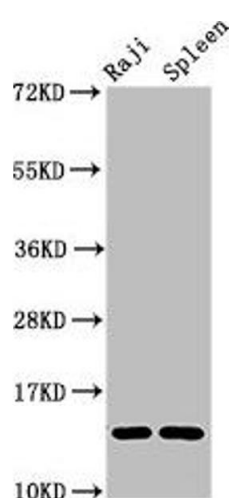
Storage: -20 °C,-80 °C

Storage Comment: Upon receipt, store at -20°C or -80°C. Avoid repeated freeze.



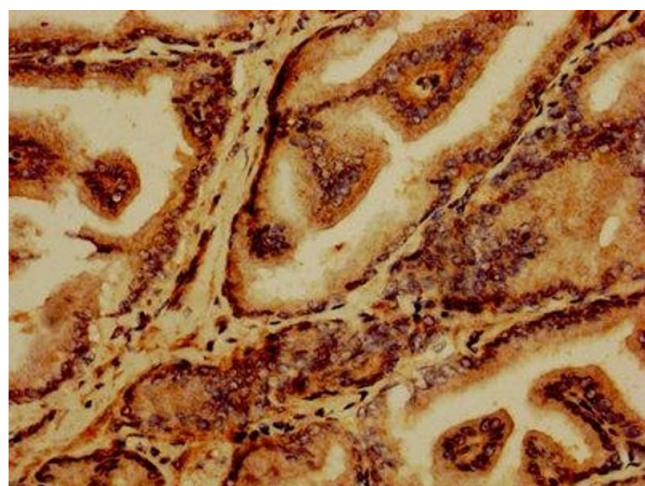
Immunohistochemistry

Image 1. IHC image of ABIN7153521 diluted at 1:1200 and staining in paraffin-embedded human heart tissue performed on a Leica Bond™ system. After dewaxing and hydration, antigen retrieval was mediated by high pressure in a citrate buffer (pH 6.0). Section was blocked with 10% normal goat serum 30min at RT. Then primary antibody (1% BSA) was incubated at 4°C overnight. The primary is detected by a biotinylated secondary antibody and visualized using an HRP conjugated SP system.



Western Blotting

Image 2. Western Blot Positive WB detected in: Raji whole cell lysate, Rat spleen tissue All lanes: GABARAPL2 antibody at 4 µg/mL Secondary Goat polyclonal to rabbit IgG at 1/50000 dilution Predicted band size: 14 kDa Observed band size: 14 kDa



Immunohistochemistry

Image 3. IHC image of ABIN7153521 diluted at 1:1200 and staining in paraffin-embedded human prostate tissue performed on a Leica Bond™ system. After dewaxing and hydration, antigen retrieval was mediated by high pressure in a citrate buffer (pH 6.0). Section was blocked with 10% normal goat serum 30min at RT. Then primary antibody (1% BSA) was incubated at 4°C overnight. The primary is detected by a biotinylated secondary antibody and visualized using an HRP conjugated SP system.