



[Go to Product page](#)

Datasheet for ABIN7153555
anti-SGCG antibody (AA 108-221)

2 Images

Overview

Quantity:	100 µg
Target:	SGCG
Binding Specificity:	AA 108-221
Reactivity:	Human
Host:	Rabbit
Clonality:	Polyclonal
Conjugate:	This SGCG antibody is un-conjugated
Application:	ELISA, Immunohistochemistry (IHC), Immunofluorescence (IF)

Product Details

Immunogen:	Recombinant Human Gamma-sarcoglycan protein (108-221AA)
Isotype:	IgG
Cross-Reactivity:	Human
Purification:	>95%, Protein G purified

Target Details

Target:	SGCG
Alternative Name:	SGCG (SGCG Products)
Background:	Background: Component of the sarcoglycan complex, a subcomplex of the dystrophin-glycoprotein complex which forms a link between the F-actin cytoskeleton and the extracellular

Target Details

matrix.

Aliases: 35 kDa dystrophin associated glycoprotein antibody, 35 kDa dystrophin-associated glycoprotein antibody, 35DAG antibody, 35kD dystrophin associated glycoprotein antibody, 35 kDa dystrophin-associated glycoprotein antibody, A4 antibody, DAGA4 antibody, DMDA antibody, DMDA1 antibody, Gamma SG antibody, Gamma-sarcoglycan antibody, Gamma-SG antibody, LGMD2C antibody, MAM antibody, MGC130048 antibody, Sarcoglycan gamma antibody, SCARM2 antibody, SCG3 antibody, SGCG antibody, SGCG_HUMAN antibody, TYPE antibody

UniProt: [Q13326](#)

Application Details

Application Notes: Recommended dilution: IHC:1:500-1:1000, IF:1:50-1:200,

Restrictions: For Research Use only

Handling

Format: Liquid

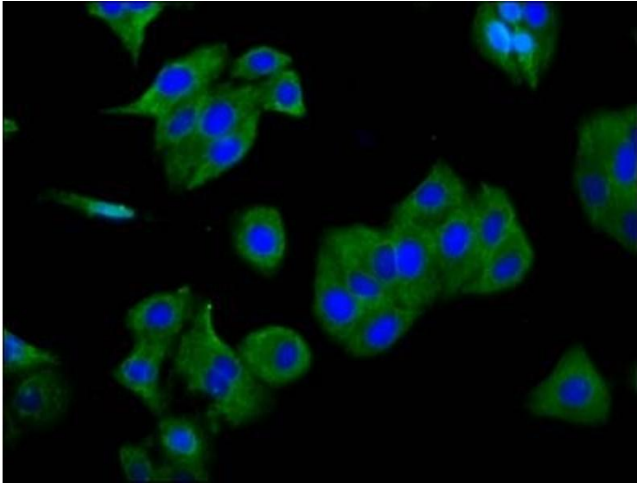
Buffer: Preservative: 0.03 % Proclin 300
Constituents: 50 % Glycerol, 0.01M PBS, pH 7.4

Preservative: ProClin

Precaution of Use: This product contains ProClin: a POISONOUS AND HAZARDOUS SUBSTANCE which should be handled by trained staff only.

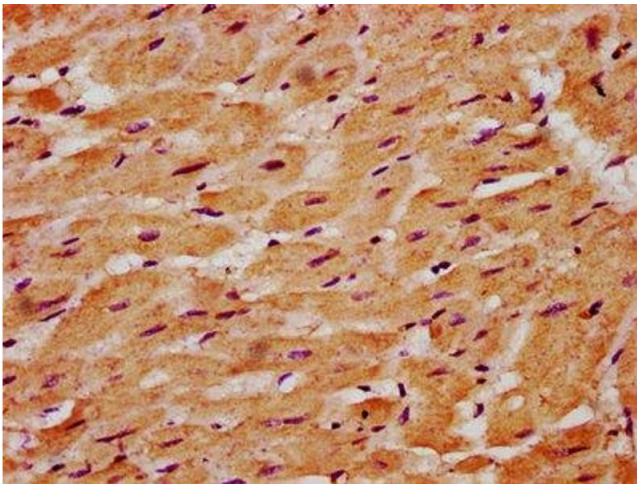
Storage: -20 °C,-80 °C

Storage Comment: Upon receipt, store at -20°C or -80°C. Avoid repeated freeze.



Immunofluorescence

Image 1. Immunofluorescence staining of HepG2 cells with ABIN7153555 at 1:166, counter-stained with DAPI. The cells were fixed in 4% formaldehyde, permeabilized using 0.2% Triton X-100 and blocked in 10% normal Goat Serum. The cells were then incubated with the antibody overnight at 4°C. The secondary antibody was Alexa Fluor 488-conjugated AffiniPure Goat Anti-Rabbit IgG(H+L).



Immunohistochemistry

Image 2. IHC image of ABIN7153555 diluted at 1:500 and staining in paraffin-embedded human heart tissue performed on a Leica Bond™ system. After dewaxing and hydration, antigen retrieval was mediated by high pressure in a citrate buffer (pH 6.0). Section was blocked with 10% normal goat serum 30min at RT. Then primary antibody (1% BSA) was incubated at 4°C overnight. The primary is detected by a biotinylated secondary antibody and visualized using an HRP conjugated SP system.