



[Go to Product page](#)

Datasheet for ABIN7153559
anti-APH1A antibody (AA 90-118)

1 Image

Overview

Quantity:	100 µg
Target:	APH1A
Binding Specificity:	AA 90-118
Reactivity:	Human
Host:	Rabbit
Clonality:	Polyclonal
Conjugate:	This APH1A antibody is un-conjugated
Application:	ELISA, Immunofluorescence (IF)

Product Details

Immunogen:	Recombinant Human Gamma-secretase subunit APH-1A protein (90-118AA)
Isotype:	IgG
Cross-Reactivity:	Human
Purification:	>95%, Protein G purified

Target Details

Target:	APH1A
Alternative Name:	APH1A (APH1A Products)
Background:	Background: Essential subunit of the gamma-secretase complex, an endoprotease complex that catalyzes the intramembrane cleavage of integral proteins such as Notch receptors and

Target Details

APP (beta-amyloid precursor protein). It probably represents a stabilizing cofactor for the presenilin homodimer that promotes the formation of a stable complex.

Aliases: 6530402N02Rik antibody, AL138795.3 antibody, Anterior Pharynx Defective 1 antibody, Anterior pharynx defective 1 homolog A antibody, APH 1A antibody, Aph 1alpha antibody, APH-1a antibody, Aph-1alpha antibody, Aph1a antibody, APH1A gamma secretase subunit antibody, APH1A_HUMAN antibody, CGI 78 antibody, CGI78 antibody, Gamma secretase subunit APH 1A antibody, Gamma Secretase Subunit APH1a antibody, Gamma-secretase subunit APH-1A antibody, Likely ortholog of C. elegans anterior pharynx defective 1A antibody, Presenilin Stabilization Factor antibody, Presenilin-stabilization factor antibody, PSF antibody, UNQ579/PRO1141 antibody

UniProt: [Q96BI3](#)

Pathways: [Notch Signaling](#), [Neurotrophin Signaling Pathway](#)

Application Details

Application Notes: Recommended dilution: IF:1:50-1:200,

Restrictions: For Research Use only

Handling

Format: Liquid

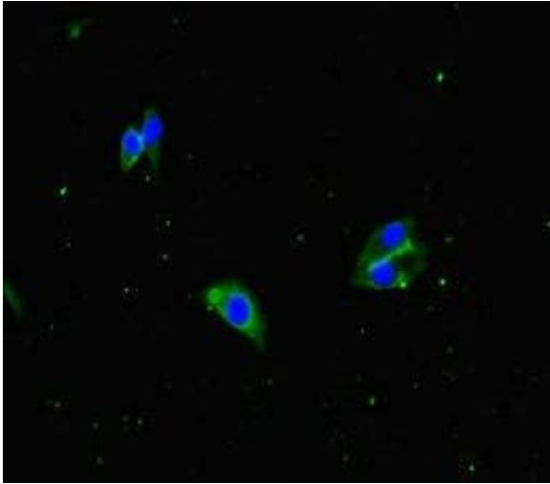
Buffer: Preservative: 0.03 % Proclin 300
Constituents: 50 % Glycerol, 0.01M PBS, PH 7.4

Preservative: ProClin

Precaution of Use: This product contains ProClin: a POISONOUS AND HAZARDOUS SUBSTANCE which should be handled by trained staff only.

Storage: -20 °C,-80 °C

Storage Comment: Upon receipt, store at -20°C or -80°C. Avoid repeated freeze.



Immunofluorescence

Image 1. Immunofluorescent analysis of HeLa cells using ABIN7153559 at dilution of 1:100 and Alexa Fluor 488-conjugated AffiniPure Goat Anti-Rabbit IgG(H+L)