

Datasheet for ABIN7153564
anti-SNCG antibody (AA 1-127)

3 Images

[Go to Product page](#)

Overview

Quantity:	100 µg
Target:	SNCG
Binding Specificity:	AA 1-127
Reactivity:	Human
Host:	Rabbit
Clonality:	Polyclonal
Conjugate:	This SNCG antibody is un-conjugated
Application:	Western Blotting (WB), Immunohistochemistry (IHC), ELISA

Product Details

Immunogen:	Recombinant Human Gamma-synuclein protein (1-127AA)
Isotype:	IgG
Cross-Reactivity:	Human, Mouse
Purification:	>95%, Protein G purified

Target Details

Target:	SNCG
Alternative Name:	SNCG (SNCG Products)
Background:	Background: Plays a role in neurofilament network integrity. May be involved in modulating axonal architecture during development and in the adult. In vitro, increases the susceptibility of

Target Details

neurofilament-H to calcium-dependent proteases By similarity. May also function in modulating the keratin network in skin. Activates the MAPK and Elk-1 signal transduction pathway By similarity.

Aliases: BCSG1 antibody, Breast cancer specific gene 1 protein antibody, Breast cancer specific protein 1 antibody, Breast cancer-specific gene 1 protein antibody, Gamma synuclein antibody, Gamma-synuclein antibody, Persyn antibody, PRSN antibody, SNCG antibody, SR antibody, Synoretin antibody, Synuclein gamma antibody, synuclein, gamma (breast cancer-specific protein 1) antibody, SYUG_HUMAN antibody

UniProt: [O76070](#)

Application Details

Application Notes: Recommended dilution: WB:1:1000-1:5000, IHC:1:20-1:200,

Restrictions: For Research Use only

Handling

Format: Liquid

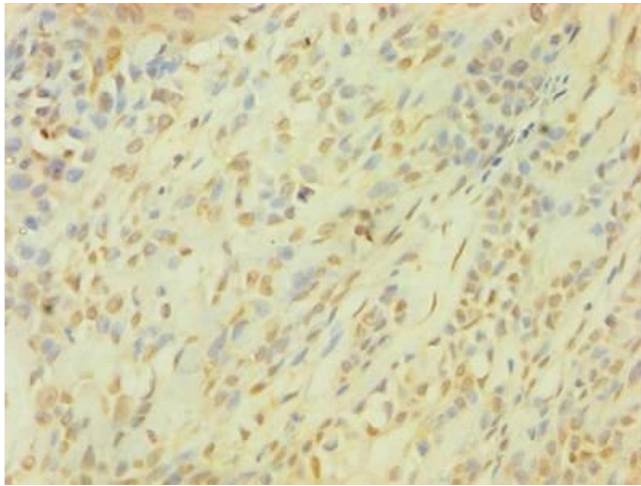
Buffer: Preservative: 0.03 % Proclin 300
Constituents: 50 % Glycerol, 0.01M PBS, PH 7.4

Preservative: ProClin

Precaution of Use: This product contains ProClin: a POISONOUS AND HAZARDOUS SUBSTANCE which should be handled by trained staff only.

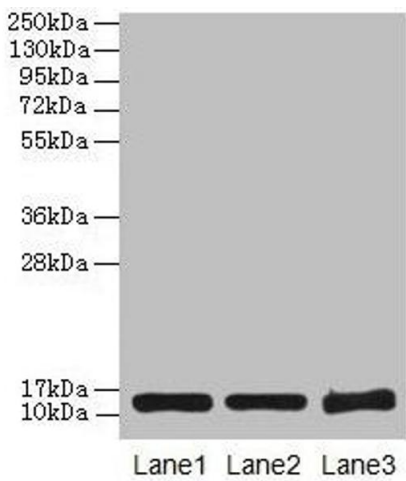
Storage: -20 °C,-80 °C

Storage Comment: Upon receipt, store at -20°C or -80°C. Avoid repeated freeze.



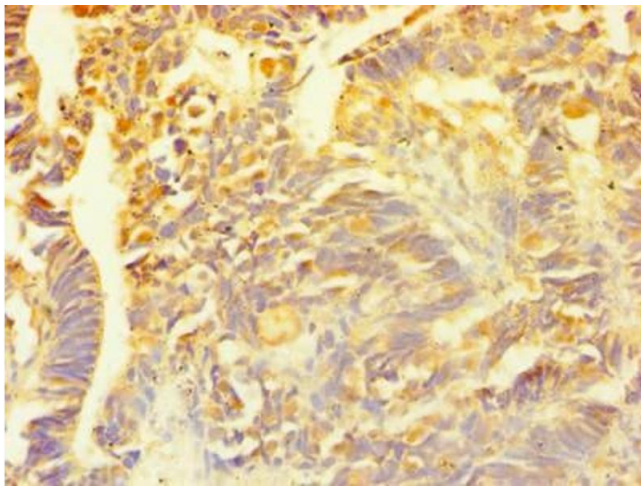
Immunohistochemistry

Image 1. Immunohistochemistry of paraffin-embedded human breast cancer using ABIN7153564 at dilution of 1:100



Western Blotting

Image 2. Western blot All lanes: SNCG antibody at 16 μ g/mL Lane 1: HT29 whole cell lysate Lane 2: Mouse brain tissue Lane 3: 293T whole cell lysate Secondary Goat polyclonal to rabbit IgG at 1/10000 dilution Predicted band size: 14 kDa Observed band size: 14 kDa



Immunohistochemistry

Image 3. Immunohistochemistry of paraffin-embedded human ovarian cancer using ABIN7153564 at dilution of 1:100