



[Go to Product page](#)

Datasheet for ABIN7153581  
**anti-GDAP1 antibody (AA 1-225)**

2 Images

Overview

Quantity:	100 µL
Target:	GDAP1
Binding Specificity:	AA 1-225
Reactivity:	Human
Host:	Rabbit
Clonality:	Polyclonal
Conjugate:	This GDAP1 antibody is un-conjugated
Application:	Western Blotting (WB), Immunohistochemistry (IHC), ELISA

Product Details

Immunogen:	Recombinant Human Ganglioside-induced differentiation-associated protein 1 protein (1-225AA)
Isotype:	IgG
Cross-Reactivity:	Human, Mouse
Purification:	Antigen Affinity Purified

Target Details

Target:	GDAP1
Alternative Name:	GDAP1 ( <a href="#">GDAP1 Products</a> )
Background:	Background: Regulates the mitochondrial network by promoting mitochondrial fission.

## Target Details

Aliases: Charcot Marie Tooth neuropathy 4A antibody, CMT4 antibody, CMT4A antibody, CMTRIA antibody, Ganglioside induced differentiation associated protein 1 antibody, Ganglioside-induced differentiation-associated protein 1 antibody, GDAP1 antibody, GDAP1\_HUMAN antibody

UniProt: [Q8TB36](#)

## Application Details

Application Notes: Recommended dilution: WB:1:1000-1:5000, IHC:1:20-1:200,

Restrictions: For Research Use only

## Handling

Format: Liquid

Buffer: PBS with 0.02 % sodium azide, 50 % glycerol, pH 7.3.

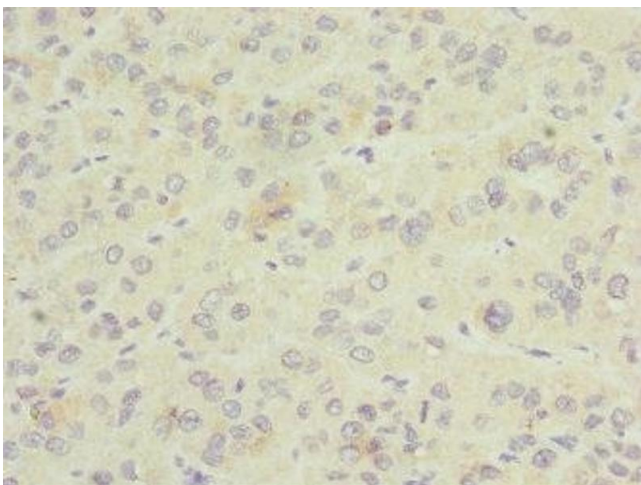
Preservative: Sodium azide

Precaution of Use: This product contains Sodium azide: a POISONOUS AND HAZARDOUS SUBSTANCE which should be handled by trained staff only.

Storage: -20 °C,-80 °C

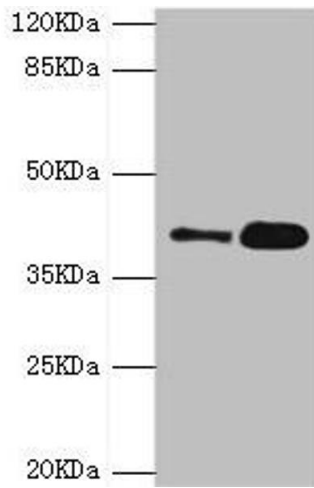
Storage Comment: Upon receipt, store at -20°C or -80°C. Avoid repeated freeze.

## Images



### Immunohistochemistry

**Image 1.** Immunohistochemistry of paraffin-embedded human liver cancer using ABIN7153581 at dilution of 1:100



### Western Blotting

**Image 2.** Western blot All lanes: GDAP1 antibody at 4.15  $\mu$ g/mL Lane 1: MCF-7 whole cell lysate Lane 2: Mouse brain tissue Secondary Goat polyclonal to rabbit IgG at 1/10000 dilution Predicted band size: 42, 34 kDa Observed band size: 42 kDa