

Datasheet for ABIN7153605
anti-GJB1 antibody (AA 215-283)



[Go to Product page](#)

2 Images

Overview

Quantity:	100 µg
Target:	GJB1
Binding Specificity:	AA 215-283
Reactivity:	Human
Host:	Rabbit
Clonality:	Polyclonal
Conjugate:	This GJB1 antibody is un-conjugated
Application:	Immunofluorescence (IF), Immunohistochemistry (IHC), ELISA

Product Details

Immunogen:	Recombinant Human Gap junction beta-1 protein (215-283AA)
Isotype:	IgG
Cross-Reactivity:	Human
Purification:	>95%, Protein G purified

Target Details

Target:	GJB1
Alternative Name:	GJB1 (GJB1 Products)
Background:	Background: One gap junction consists of a cluster of closely packed pairs of transmembrane channels, the connexons, through which materials of low MW diffuse from one cell to a

Target Details

neighboring cell.

Aliases: Charcot Marie Tooth neuropathy X linked antibody, CMTX 1 antibody, CMTX antibody, CMTX1 antibody, Connexin-32 antibody, Connexin32 antibody, CX 32 antibody, Cx32 antibody, CXB1_HUMAN antibody, GAP junction 28 kDa liver protein antibody, Gap junction beta 1 protein antibody, Gap junction beta-1 protein antibody, Gap junction protein beta 1 32kD antibody, Gap junction protein beta 1 antibody, GJB 1 antibody, GJB1 antibody

UniProt: [P08034](#)

Pathways: [Cell-Cell Junction Organization](#)

Application Details

Application Notes: Recommended dilution: IHC:1:20-1:200, IF:1:50-1:200,

Restrictions: For Research Use only

Handling

Format: Liquid

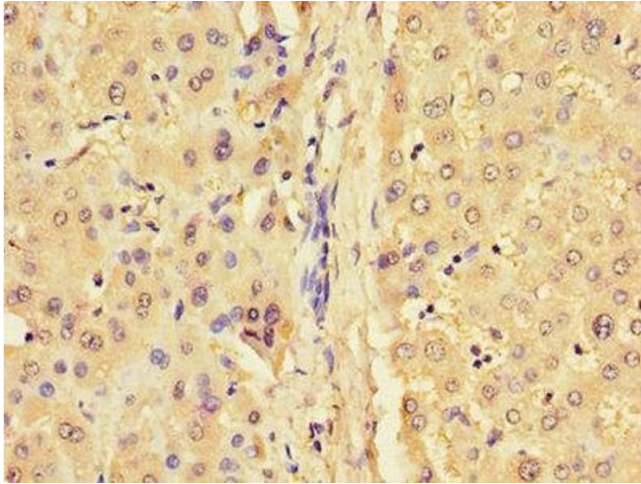
Buffer: Preservative: 0.03 % Proclin 300
Constituents: 50 % Glycerol, 0.01M PBS, PH 7.4

Preservative: ProClin

Precaution of Use: This product contains ProClin: a POISONOUS AND HAZARDOUS SUBSTANCE which should be handled by trained staff only.

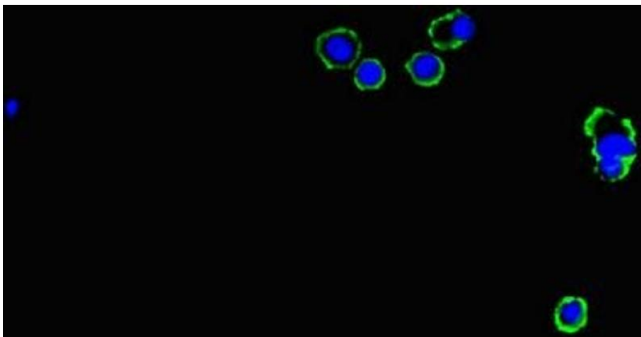
Storage: -20 °C,-80 °C

Storage Comment: Upon receipt, store at -20°C or -80°C. Avoid repeated freeze.



Immunohistochemistry

Image 1. Immunohistochemistry of paraffin-embedded human liver tissue using ABIN7153605 at dilution of 1:100



Immunofluorescence

Image 2. Immunofluorescent analysis of MCF-7 cells using ABIN7153605 at dilution of 1:100 and Alexa Fluor 488-conjugated AffiniPure Goat Anti-Rabbit IgG(H+L)