

Datasheet for ABIN7153633  
**anti-GJD2 antibody (AA 99-197)**[Go to Product page](#)

## 4 Images

## Overview

Quantity:	100 µg
Target:	GJD2
Binding Specificity:	AA 99-197
Reactivity:	Human
Host:	Rabbit
Clonality:	Polyclonal
Conjugate:	This GJD2 antibody is un-conjugated
Application:	Western Blotting (WB), ELISA, Immunohistochemistry (IHC), Immunofluorescence (IF)

## Product Details

Immunogen:	Recombinant Human Gap junction delta-2 protein (99-197AA)
Isotype:	IgG
Cross-Reactivity:	Human
Purification:	>95%, Protein G purified

## Target Details

Target:	GJD2
Alternative Name:	GJD2 ( <a href="#">GJD2 Products</a> )
Background:	Background: One gap junction consists of a cluster of closely packed pairs of transmembrane channels, the connexons, through which materials of low MW diffuse from one cell to a

## Target Details

neighboring cell.

Aliases: Connexin 36 / GJA9 antibody, Connexin 36 antibody, Connexin-36 antibody, Cx36 antibody, CXD2\_HUMAN antibody, Gap junction alpha-9 protein antibody, Gap junction delta-2 protein antibody, Gap junction protein alpha 9 antibody, gap junction protein, alpha 9, 36 kDa antibody, GJA9 antibody, GJD2 antibody, MGC138315 antibody, MGC138319 antibody

UniProt: [Q9UKL4](#)

## Application Details

Application Notes: Recommended dilution: WB:1:500-1:5000, IHC:1:500-1:1000, IF:1:50-1:200,

Restrictions: For Research Use only

## Handling

Format: Liquid

Buffer: Preservative: 0.03 % Proclin 300  
Constituents: 50 % Glycerol, 0.01M PBS, pH 7.4

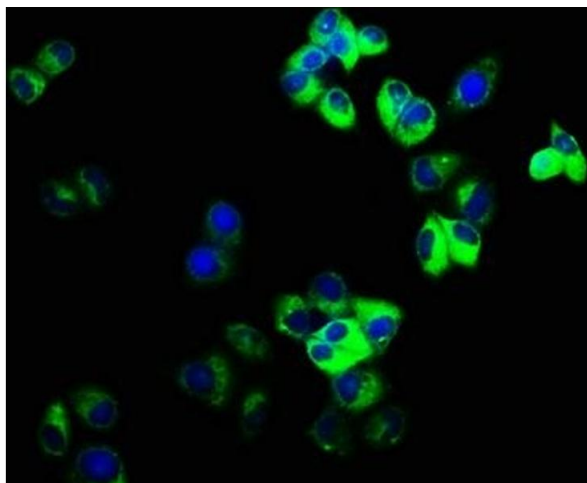
Preservative: ProClin

Precaution of Use: This product contains ProClin: a POISONOUS AND HAZARDOUS SUBSTANCE which should be handled by trained staff only.

Storage: -20 °C,-80 °C

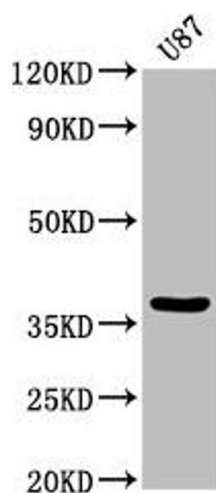
Storage Comment: Upon receipt, store at -20°C or -80°C. Avoid repeated freeze.

## Images



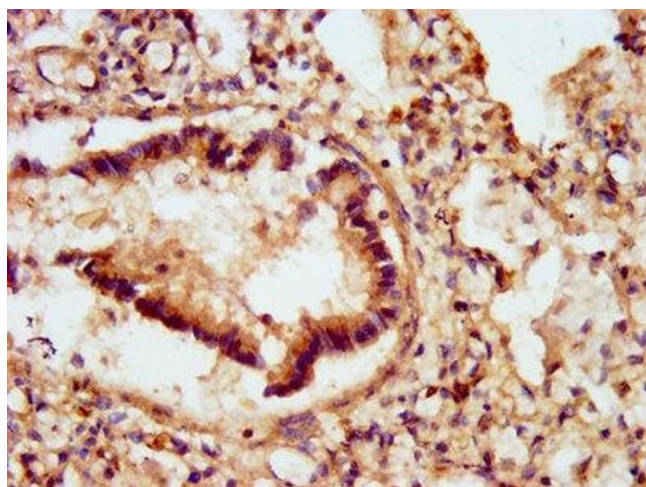
### Immunofluorescence

**Image 1.** Immunofluorescence staining of Hela cells with ABIN7153633 at 1:166, counter-stained with DAPI. The cells were fixed in 4% formaldehyde, permeabilized using 0.2% Triton X-100 and blocked in 10% normal Goat Serum. The cells were then incubated with the antibody overnight at 4°C. The secondary antibody was Alexa Fluor 488-conjugated AffiniPure Goat Anti-Rabbit IgG(H+L).



#### Western Blotting

**Image 2.** Western Blot Positive WB detected in: U87 whole cell lysate All lanes: GJD2 antibody at 3.2 µg/mL Secondary Goat polyclonal to rabbit IgG at 1/50000 dilution Predicted band size: 37 kDa Observed band size: 37 kDa



#### Immunohistochemistry

**Image 3.** IHC image of ABIN7153633 diluted at 1:500 and staining in paraffin-embedded human lung tissue performed on a Leica Bond™ system. After dewaxing and hydration, antigen retrieval was mediated by high pressure in a citrate buffer (pH 6.0). Section was blocked with 10% normal goat serum 30min at RT. Then primary antibody (1% BSA) was incubated at 4°C overnight. The primary is detected by a biotinylated secondary antibody and visualized using an HRP conjugated SP system.

Please check the [product details page](#) for more images. Overall 4 images are available for ABIN7153633.