



[Go to Product page](#)

Datasheet for ABIN7153655  
**anti-MLZE antibody (AA 1-508)**

1 Image

### Overview

Quantity:	100 µg
Target:	MLZE
Binding Specificity:	AA 1-508
Reactivity:	Human
Host:	Rabbit
Clonality:	Polyclonal
Conjugate:	This MLZE antibody is un-conjugated
Application:	ELISA, Immunohistochemistry (IHC)

### Product Details

Immunogen:	Recombinant Human Gasdermin-C protein (1-508AA)
Isotype:	IgG
Cross-Reactivity:	Human
Purification:	>95%, Protein G purified

### Target Details

Target:	MLZE
Alternative Name:	GSDMC ( <a href="#">MLZE Products</a> )
Background:	Background: cytoplasm, microtubule organizing center, mitochondrion Aliases: Gasdermin C antibody, Gasdermin-C antibody, GSDMC antibody, GSDMC_HUMAN

## Target Details

antibody, Melanoma derived leucine zipper, extra nuclear factor antibody, Melanoma-derived leucine zipper-containing extranuclear factor antibody, MLZE antibody

UniProt: [Q9BYG8](#)

## Application Details

Application Notes: Recommended dilution: IHC:1:20-1:200,

Restrictions: For Research Use only

## Handling

Format: Liquid

Buffer: Preservative: 0.03 % Proclin 300  
Constituents: 50 % Glycerol, 0.01M PBS, PH 7.4

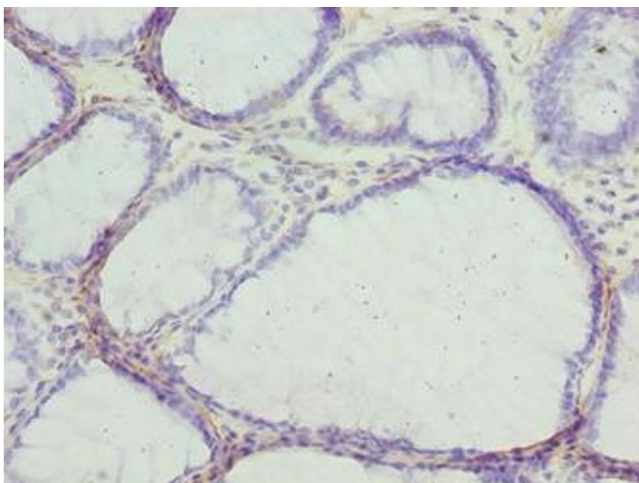
Preservative: ProClin

Precaution of Use: This product contains ProClin: a POISONOUS AND HAZARDOUS SUBSTANCE which should be handled by trained staff only.

Storage: -20 °C,-80 °C

Storage Comment: Upon receipt, store at -20°C or -80°C. Avoid repeated freeze.

## Images



### Immunohistochemistry

**Image 1.** Immunohistochemistry of paraffin-embedded human colon cancer using ABIN7153655 at dilution of 1:100