



[Go to Product page](#)

Datasheet for ABIN7153675

## anti-Gastrin-Releasing Peptide antibody (AA 31-98)

### 3 Images

#### Overview

Quantity:	100 µg
Target:	Gastrin-Releasing Peptide (GRP)
Binding Specificity:	AA 31-98
Reactivity:	Human
Host:	Rabbit
Clonality:	Polyclonal
Conjugate:	This Gastrin-Releasing Peptide antibody is un-conjugated
Application:	ELISA, Immunohistochemistry (IHC), Immunofluorescence (IF)

#### Product Details

Immunogen:	Recombinant Human Gastrin-releasing peptide protein (31-98AA)
Isotype:	IgG
Cross-Reactivity:	Human
Purification:	>95%, Protein G purified

#### Target Details

Target:	Gastrin-Releasing Peptide (GRP)
Alternative Name:	GRP ( <a href="#">GRP Products</a> )
Background:	Background: GRP stimulates gastrin release as well as other gastrointestinal hormones. Operates as a negative feedback regulating fear and established a causal relationship between

## Target Details

---

GRP-receptor gene expression, long-term potentiation, and amygdala-dependent memory for fear

Aliases: BN antibody, Bombesin antibody, GRP antibody, GRP-10 antibody, GRP\_HUMAN antibody, GRP10 antibody, Neuromedin-C antibody, NeuromedinC antibody, Pre progastrin releasing peptide antibody, PreproGRP antibody, ProGRP antibody

UniProt: [P07492](#)

Pathways: [Peptide Hormone Metabolism](#), [Hormone Activity](#)

## Application Details

---

Application Notes: Recommended dilution: IHC:1:20-1:200, IF:1:50-1:200,

Restrictions: For Research Use only

## Handling

---

Format: Liquid

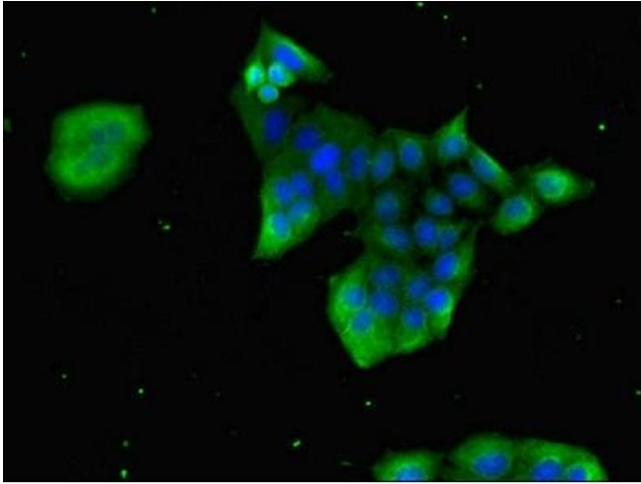
Buffer: Preservative: 0.03 % Proclin 300  
Constituents: 50 % Glycerol, 0.01M PBS, PH 7.4

Preservative: ProClin

Precaution of Use: This product contains ProClin: a POISONOUS AND HAZARDOUS SUBSTANCE which should be handled by trained staff only.

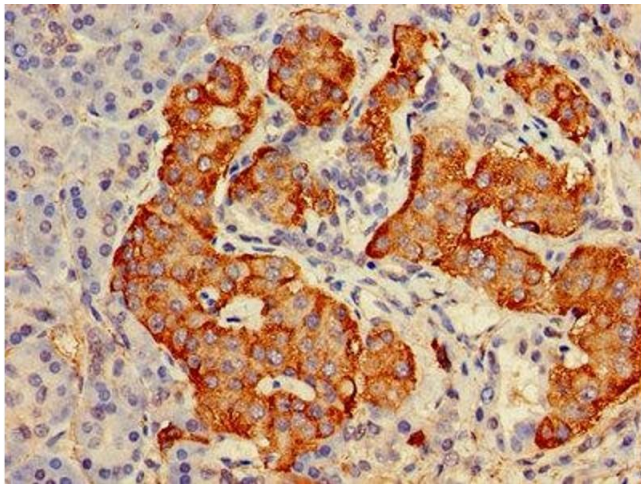
Storage: -20 °C,-80 °C

Storage Comment: Upon receipt, store at -20°C or -80°C. Avoid repeated freeze.



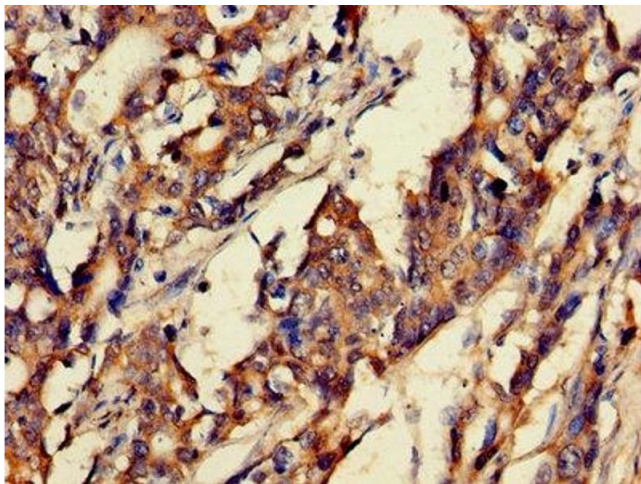
#### Immunofluorescence

**Image 1.** Immunofluorescent analysis of PC-3 cells using ABIN7153675 at dilution of 1:100 and Alexa Fluor 488-conjugated AffiniPure Goat Anti-Rabbit IgG(H+L)



#### Immunohistochemistry

**Image 2.** Immunohistochemistry of paraffin-embedded human pancreatic tissue using ABIN7153675 at dilution of 1:100



#### Immunohistochemistry

**Image 3.** Immunohistochemistry of paraffin-embedded human gastric cancer using ABIN7153675 at dilution of 1:100