



[Go to Product page](#)

Datasheet for ABIN7153725
anti-GFRA3 antibody (AA 32-236)

3 Images

Overview

| | |
|----------------------|--|
| Quantity: | 100 µg |
| Target: | GFRA3 |
| Binding Specificity: | AA 32-236 |
| Reactivity: | Human |
| Host: | Rabbit |
| Clonality: | Polyclonal |
| Conjugate: | This GFRA3 antibody is un-conjugated |
| Application: | ELISA, Immunohistochemistry (IHC), Immunofluorescence (IF) |

Product Details

| | |
|-------------------|---|
| Immunogen: | Recombinant Human GDNF family receptor alpha-3 protein (32-236AA) |
| Isotype: | IgG |
| Cross-Reactivity: | Human |
| Purification: | >95%, Protein G purified |

Target Details

| | |
|-------------------|---|
| Target: | GFRA3 |
| Alternative Name: | GFRA3 (GFRA3 Products) |
| Background: | Background: Receptor for the glial cell line-derived neurotrophic factor, ARTN (artemin). Mediates the artemin-induced autophosphorylation and activation of the RET receptor tyrosine |

Target Details

kinase.

Aliases: GDNF family receptor alpha 3 antibody, GDNF family receptor alpha-3 antibody, GDNF receptor alpha-3 antibody, GDNFR-alpha-3 antibody, GDNFR3 antibody, GFR-alpha-3 antibody, GFRA3 antibody, GFRA3_HUMAN antibody, Glial cell line derived neurotrophic factor receptor alpha 3 antibody, GPI linked receptor antibody, OTTHUMP00000159486 antibody, OTTHUMP00000224020 antibody

UniProt: [O60609](#)

Application Details

Application Notes: Recommended dilution: IHC:1:20-1:200, IF:1:50-1:200,

Restrictions: For Research Use only

Handling

Format: Liquid

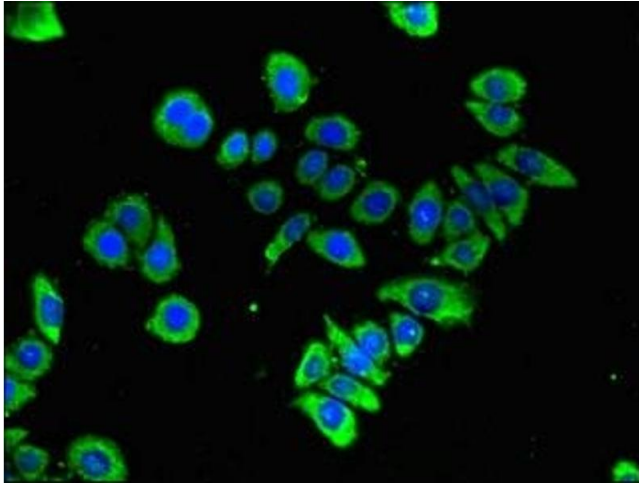
Buffer: Preservative: 0.03 % Proclin 300
Constituents: 50 % Glycerol, 0.01M PBS, PH 7.4

Preservative: ProClin

Precaution of Use: This product contains ProClin: a POISONOUS AND HAZARDOUS SUBSTANCE which should be handled by trained staff only.

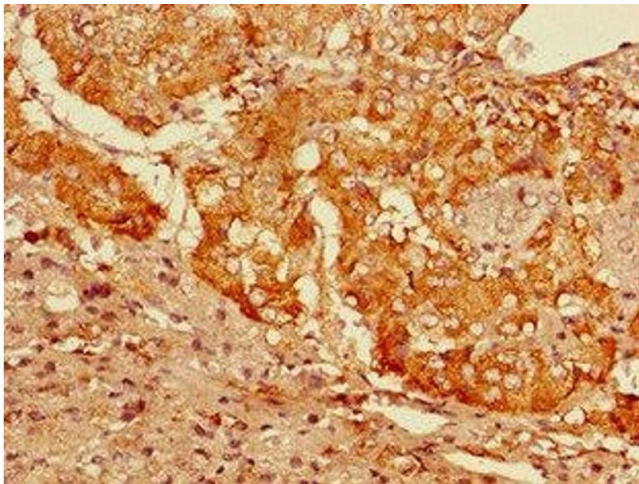
Storage: -20 °C,-80 °C

Storage Comment: Upon receipt, store at -20°C or -80°C. Avoid repeated freeze.



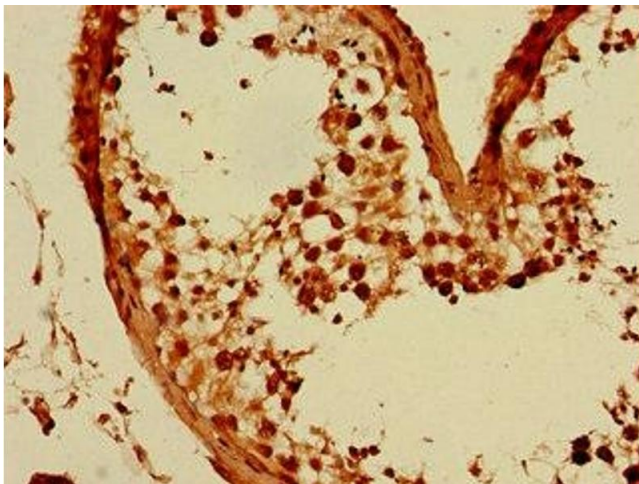
Immunofluorescence

Image 1. Immunofluorescent analysis of PC-3 cells using ABIN7153725 at dilution of 1:100 and Alexa Fluor 488-conjugated AffiniPure Goat Anti-Rabbit IgG(H+L)



Immunohistochemistry

Image 2. Immunohistochemistry of paraffin-embedded human adrenal gland tissue using ABIN7153725 at dilution of 1:100



Immunohistochemistry

Image 3. Immunohistochemistry of paraffin-embedded human testis tissue using ABIN7153725 at dilution of 1:100