



[Go to Product page](#)

Datasheet for ABIN7153745
anti-GMDS antibody (AA 243-346)

2 Images

Overview

| | |
|----------------------|--|
| Quantity: | 100 µg |
| Target: | GMDS |
| Binding Specificity: | AA 243-346 |
| Reactivity: | Human |
| Host: | Rabbit |
| Clonality: | Polyclonal |
| Conjugate: | This GMDS antibody is un-conjugated |
| Application: | ELISA, Immunohistochemistry (IHC), Immunofluorescence (IF) |

Product Details

| | |
|-------------------|---|
| Immunogen: | Recombinant Human GDP-mannose 4,6 dehydratase protein (243-346AA) |
| Isotype: | IgG |
| Cross-Reactivity: | Human |
| Purification: | >95%, Protein G purified |

Target Details

| | |
|-------------------|---|
| Target: | GMDS |
| Alternative Name: | GMDS (GMDS Products) |
| Background: | Background: Catalyzes the conversion of GDP-D-mannose to GDP-4-dehydro-6-deoxy-D-mannose. |

Target Details

Aliases: GDP D mannose dehydratase antibody, GDP mannose 4 6 dehydratase antibody, GDP-D-mannose dehydratase antibody, GDP-mannose 4,6 dehydratase antibody, GMD antibody, GmDs antibody, GMDS_HUMAN antibody, OTTHUMP00000017756 antibody, OTTHUMP00000232770 antibody, SDR3E1 antibody, Short chain dehydrogenase/reductase family 3E member 1 antibody

UniProt: [O60547](#)

Application Details

Application Notes: Recommended dilution: IHC:1:200-1:500, IF:1:50-1:200,

Restrictions: For Research Use only

Handling

Format: Liquid

Buffer: Preservative: 0.03 % Proclin 300
Constituents: 50 % Glycerol, 0.01M PBS, pH 7.4

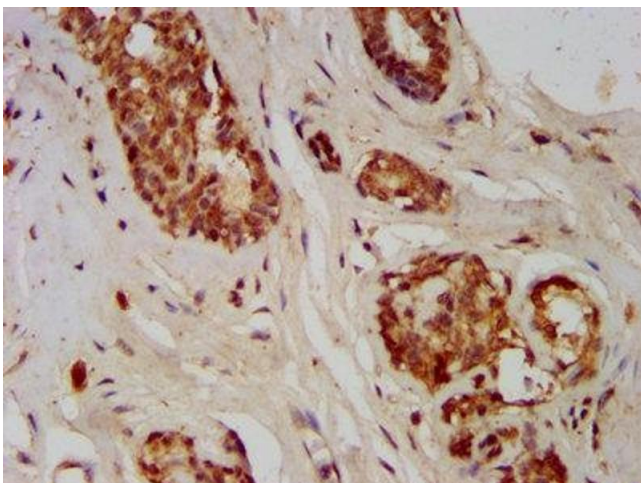
Preservative: ProClin

Precaution of Use: This product contains ProClin: a POISONOUS AND HAZARDOUS SUBSTANCE which should be handled by trained staff only.

Storage: -20 °C,-80 °C

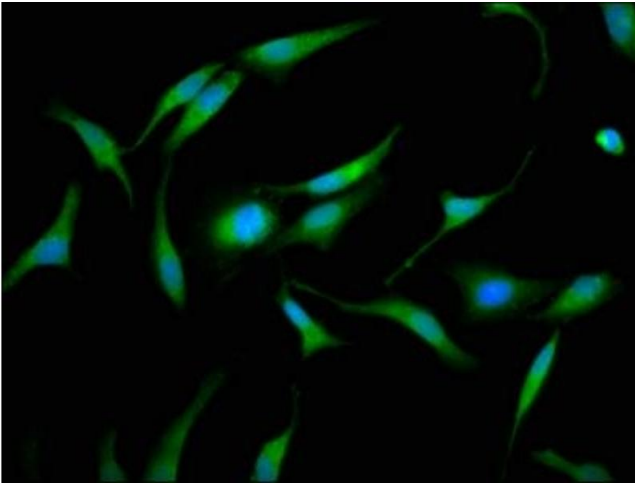
Storage Comment: Upon receipt, store at -20°C or -80°C. Avoid repeated freeze.

Images



Immunohistochemistry

Image 1. IHC image of ABIN7153745 diluted at 1:400 and staining in paraffin-embedded human breast cancer performed on a Leica Bond™ system. After dewaxing and hydration, antigen retrieval was mediated by high pressure in a citrate buffer (pH 6.0). Section was blocked with 10% normal goat serum 30min at RT. Then primary antibody (1% BSA) was incubated at 4°C overnight. The primary is detected by a biotinylated secondary antibody and



visualized using an HRP conjugated SP system.

Immunofluorescence

Image 2. Immunofluorescence staining of HeLa cells with ABIN7153745 at 1:133, counter-stained with DAPI. The cells were fixed in 4% formaldehyde, permeabilized using 0.2% Triton X-100 and blocked in 10% normal Goat Serum. The cells were then incubated with the antibody overnight at 4°C. The secondary antibody was Alexa Fluor 488-conjugated AffiniPure Goat Anti-Rabbit IgG(H+L).