



[Go to Product page](#)

Datasheet for ABIN7153749
anti-Gelsolin antibody (AA 28-782)

3 Images

Overview

Quantity:	100 µg
Target:	Gelsolin (GSN)
Binding Specificity:	AA 28-782
Reactivity:	Human
Host:	Rabbit
Clonality:	Polyclonal
Conjugate:	This Gelsolin antibody is un-conjugated
Application:	Western Blotting (WB), Immunohistochemistry (IHC), ELISA, Immunofluorescence (IF)

Product Details

Immunogen:	Recombinant Human Gelsolin protein (28-782AA)
Isotype:	IgG
Cross-Reactivity:	Human
Purification:	>95%, Protein G purified

Target Details

Target:	Gelsolin (GSN)
Alternative Name:	GSN (GSN Products)
Background:	Background: Calcium-regulated, actin-modulating protein that binds to the plus (or barbed) ends of actin monomers or filaments, preventing monomer exchange (end-blocking or

Target Details

capping). It can promote the assembly of monomers into filaments (nucleation) as well as sever filaments already formed. Plays a role in ciliogenesis.

Aliases: Actin depolymerizing factor antibody, Actin-depolymerizing factor antibody, ADF antibody, AGEL antibody, Brevin antibody, DKFZp313L0718 antibody, GELS_HUMAN antibody, Gelsolin antibody, Gsn antibody

UniProt: [P06396](#)

Pathways: [Caspase Cascade in Apoptosis](#), [Regulation of Actin Filament Polymerization](#), [Autophagy](#)

Application Details

Application Notes: Recommended dilution: WB:1:500-1:5000, IHC:1:200-1:500, IF:1:50-1:200,

Restrictions: For Research Use only

Handling

Format: Liquid

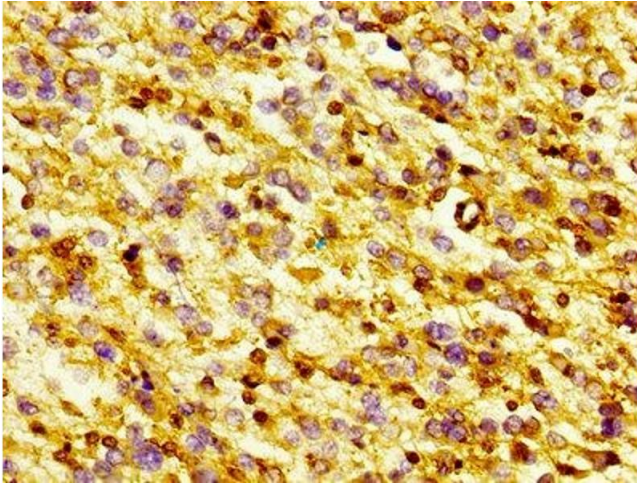
Buffer: Preservative: 0.03 % Proclin 300
Constituents: 50 % Glycerol, 0.01M PBS, PH 7.4

Preservative: ProClin

Precaution of Use: This product contains ProClin: a POISONOUS AND HAZARDOUS SUBSTANCE which should be handled by trained staff only.

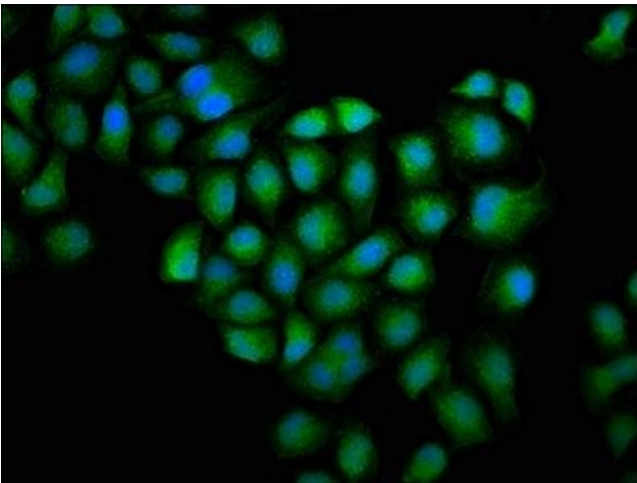
Storage: -20 °C,-80 °C

Storage Comment: Upon receipt, store at -20°C or -80°C. Avoid repeated freeze.



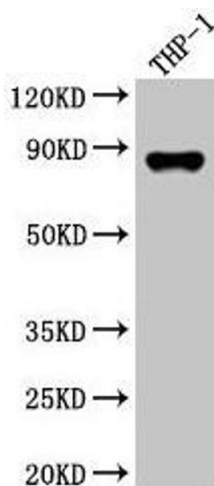
Immunohistochemistry

Image 1. IHC image of ABIN7153749 diluted at 1:300 and staining in paraffin-embedded human glioma performed on a Leica Bond™ system. After dewaxing and hydration, antigen retrieval was mediated by high pressure in a citrate buffer (pH 6.0). Section was blocked with 10% normal goat serum 30min at RT. Then primary antibody (1% BSA) was incubated at 4°C overnight. The primary is detected by a biotinylated secondary antibody and visualized using an HRP conjugated SP system.



Immunofluorescence

Image 2. Immunofluorescence staining of HeLa cells with ABIN7153749 at 1:100, counter-stained with DAPI. The cells were fixed in 4% formaldehyde, permeabilized using 0.2% Triton X-100 and blocked in 10% normal Goat Serum. The cells were then incubated with the antibody overnight at 4°C. The secondary antibody was Alexa Fluor 488-conjugated AffiniPure Goat Anti-Rabbit IgG(H+L).



Western Blotting

Image 3. Western Blot Positive WB detected in: THP-1 whole cell lysate All lanes: GSN antibody at 3.5 µg/mL Secondary Goat polyclonal to rabbit IgG at 1/50000 dilution Predicted band size: 86, 81, 82 kDa Observed band size: 86 kDa