



[Go to Product page](#)

Datasheet for ABIN7153765  
**anti-GEMIN7 antibody (AA 1-131)**

1 Image

Overview

Quantity:	100 µg
Target:	GEMIN7
Binding Specificity:	AA 1-131
Reactivity:	Human
Host:	Rabbit
Clonality:	Polyclonal
Conjugate:	This GEMIN7 antibody is un-conjugated
Application:	ELISA, Western Blotting (WB)

Product Details

Immunogen:	Recombinant Human Gem-associated protein 7 protein (1-131AA)
Isotype:	IgG
Cross-Reactivity:	Human
Purification:	>95%, Protein G purified

Target Details

Target:	GEMIN7
Alternative Name:	GEMIN7 ( <a href="#">GEMIN7 Products</a> )
Background:	Background: The SMN complex plays a catalyst role in the assembly of small nuclear ribonucleoproteins (snRNPs), the building blocks of the spliceosome. Thereby, plays an

## Target Details

---

important role in the splicing of cellular pre-mRNAs. Most spliceosomal snRNPs contain a common set of Sm proteins SNRPB, SNRPD1, SNRPD2, SNRPD3, SNRPE, SNRPF and SNRPG that assemble in a heptameric protein ring on the Sm site of the small nuclear RNA to form the core snRNP. In the cytosol, the Sm proteins SNRPD1, SNRPD2, SNRPE, SNRPF and SNRPG are trapped in an inactive 6S pICln-Sm complex by the chaperone CLNS1A that controls the assembly of the core snRNP. Dissociation by the SMN complex of CLNS1A from the trapped Sm proteins and their transfer to an SMN-Sm complex triggers the assembly of core snRNPs and their transport to the nucleus.

Aliases: GEMIN7Gem-associated protein 7 antibody, Gemin-7 antibody, SIP3 antibody

---

UniProt: [Q9H840](#)

---

Pathways: [Ribonucleoprotein Complex Subunit Organization](#)

## Application Details

---

Application Notes: Recommended dilution: WB:1:1000-1:5000,

---

Restrictions: For Research Use only

## Handling

---

Format: Liquid

---

Buffer: Preservative: 0.03 % Proclin 300  
Constituents: 50 % Glycerol, 0.01M PBS, PH 7.4

---

Preservative: ProClin

---

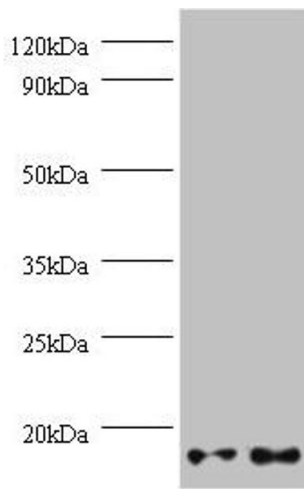
Precaution of Use: This product contains ProClin: a POISONOUS AND HAZARDOUS SUBSTANCE which should be handled by trained staff only.

---

Storage: -20 °C,-80 °C

---

Storage Comment: Upon receipt, store at -20°C or -80°C. Avoid repeated freeze.



### Western Blotting

**Image 1.** Western blot All lanes: GEMIN7 antibody at 2  $\mu$ g/mL Lane 1: Hela whole cell lysate Lane 2: 293T whole cell lysate Secondary Goat polyclonal to rabbit IgG at 1/10000 dilution Predicted band size: 15 kDa Observed band size: 15 kDa