

Datasheet for ABIN7153815
anti-Gephyrin antibody (AA 360-460)

2 Images

[Go to Product page](#)

Overview

Quantity:	100 µg
Target:	Gephyrin (GPHN)
Binding Specificity:	AA 360-460
Reactivity:	Human
Host:	Rabbit
Clonality:	Polyclonal
Conjugate:	This Gephyrin antibody is un-conjugated
Application:	Immunohistochemistry (IHC), ELISA

Product Details

Immunogen:	Recombinant Human Gephyrin protein (360-460AA)
Isotype:	IgG
Cross-Reactivity:	Human
Purification:	>95%, Protein G purified

Target Details

Target:	Gephyrin (GPHN)
Alternative Name:	GPHN (GPHN Products)
Background:	Background: Microtubule-associated protein involved in membrane protein-cytoskeleton interactions. It is thought to anchor the inhibitory glycine receptor (GLYR) to subsynaptic

Target Details

microtubules. Catalyzes two steps in the biosynthesis of the molybdenum cofactor. In the first step, molybdopterin is adenylated. Subsequently, molybdate is inserted into adenylated molybdopterin and AMP is released.

Aliases: Domain E antibody, Domain G antibody, GEPH antibody, GEPH_HUMAN antibody, GPH antibody, GPHN antibody, GPHRYN antibody, KIAA1385 antibody, Molybdopterin molybdenumtransferase antibody, MPT adenyltransferase antibody, MPT Mo-transferase antibody

UniProt: [Q9NQX3](#)

Pathways: [Synaptic Membrane](#), [Skeletal Muscle Fiber Development](#)

Application Details

Application Notes: Recommended dilution: IHC:1:200-1:500,

Restrictions: For Research Use only

Handling

Format: Liquid

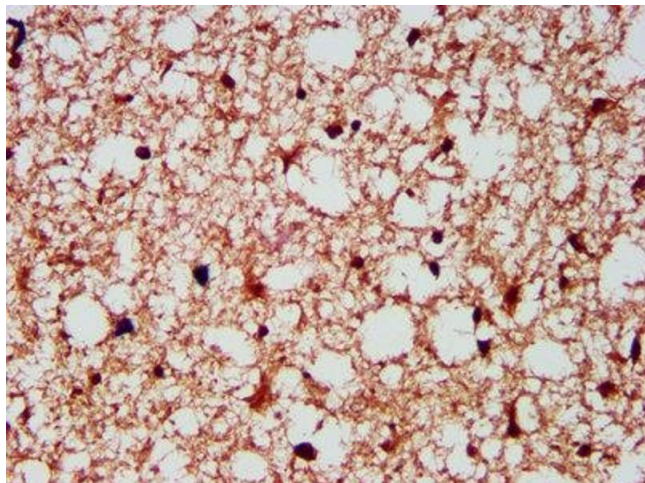
Buffer: Preservative: 0.03 % Proclin 300
Constituents: 50 % Glycerol, 0.01M PBS, pH 7.4

Preservative: ProClin

Precaution of Use: This product contains ProClin: a POISONOUS AND HAZARDOUS SUBSTANCE which should be handled by trained staff only.

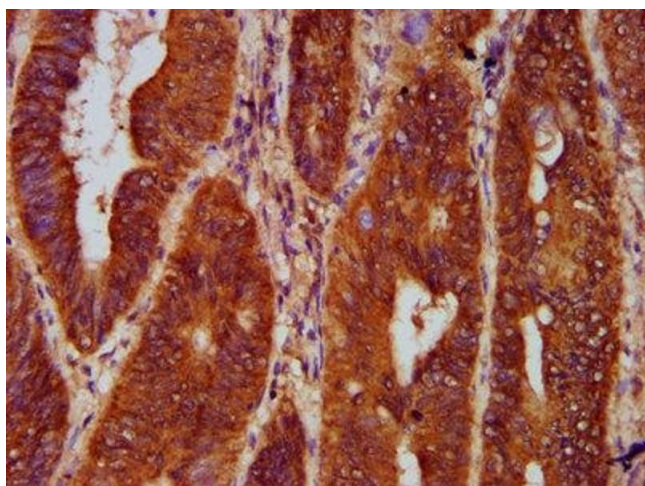
Storage: -20 °C,-80 °C

Storage Comment: Upon receipt, store at -20°C or -80°C. Avoid repeated freeze.



Immunohistochemistry

Image 1. IHC image of ABIN7153815 diluted at 1:300 and staining in paraffin-embedded human brain tissue performed on a Leica Bond™ system. After dewaxing and hydration, antigen retrieval was mediated by high pressure in a citrate buffer (pH 6.0). Section was blocked with 10% normal goat serum 30min at RT. Then primary antibody (1% BSA) was incubated at 4°C overnight. The primary is detected by a biotinylated secondary antibody and visualized using an HRP conjugated SP system.



Immunohistochemistry

Image 2. IHC image of ABIN7153815 diluted at 1:300 and staining in paraffin-embedded human colon cancer tissue performed on a Leica Bond™ system. After dewaxing and hydration, antigen retrieval was mediated by high pressure in a citrate buffer (pH 6.0). Section was blocked with 10% normal goat serum 30min at RT. Then primary antibody (1% BSA) was incubated at 4°C overnight. The primary is detected by a biotinylated secondary antibody and visualized using an HRP conjugated SP system.