



[Go to Product page](#)

Datasheet for ABIN7153831

## anti-GSG1-Like antibody (AA 84-176)

### 1 Image

#### Overview

Quantity:	100 µg
Target:	GSG1-Like (GSG1L)
Binding Specificity:	AA 84-176
Reactivity:	Human
Host:	Rabbit
Clonality:	Polyclonal
Conjugate:	This GSG1-Like antibody is un-conjugated
Application:	ELISA, Immunofluorescence (IF)

#### Product Details

Immunogen:	Recombinant Human Germ cell-specific gene 1-like protein (84-176AA)
Isotype:	IgG
Cross-Reactivity:	Human
Purification:	>95%, Protein G purified

#### Target Details

Target:	GSG1-Like (GSG1L)
Alternative Name:	GSG1L ( <a href="#">GSG1L Products</a> )
Background:	Background: As a component of the inner core of AMPAR complex, modifies AMPA receptor (AMPA) gating.

## Target Details

Aliases: Germ cell-specific gene 1-like protein antibody, GSG1-like protein antibody, GSG1L antibody, GSG1L\_HUMAN antibody, KTSR5831 antibody, MGC18079 antibody, PRO19651 antibody

UniProt: [Q6UXU4](#)

## Application Details

Application Notes: Recommended dilution: IF:1:50-1:200,

Restrictions: For Research Use only

## Handling

Format: Liquid

Buffer: Preservative: 0.03 % Proclin 300  
Constituents: 50 % Glycerol, 0.01M PBS, pH 7.4

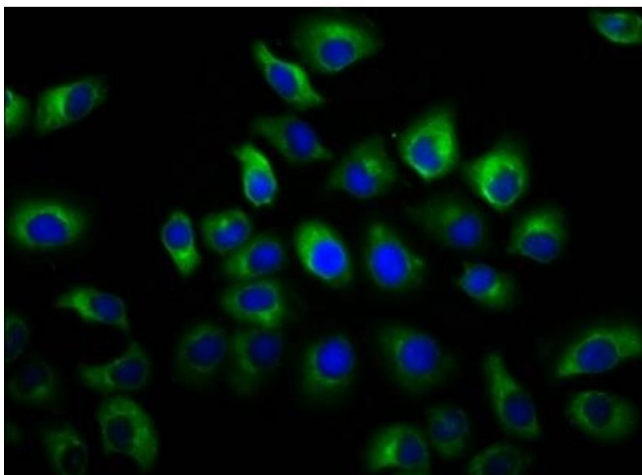
Preservative: ProClin

Precaution of Use: This product contains ProClin: a POISONOUS AND HAZARDOUS SUBSTANCE which should be handled by trained staff only.

Storage: -20 °C,-80 °C

Storage Comment: Upon receipt, store at -20°C or -80°C. Avoid repeated freeze.

## Images



### Immunofluorescence

**Image 1.** Immunofluorescence staining of A549 cells with ABIN7153831 at 1:66, counter-stained with DAPI. The cells were fixed in 4% formaldehyde, permeabilized using 0.2% Triton X-100 and blocked in 10% normal Goat Serum. The cells were then incubated with the antibody overnight at 4°C. The secondary antibody was Alexa Fluor 488-conjugated AffiniPure Goat Anti-Rabbit IgG(H+L).