

Datasheet for ABIN7153835  
**anti-GCET2 antibody (AA 1-178)**[Go to Product page](#)

## 2 Images

## Overview

Quantity:	100 µg
Target:	GCET2
Binding Specificity:	AA 1-178
Reactivity:	Human
Host:	Rabbit
Clonality:	Polyclonal
Conjugate:	This GCET2 antibody is un-conjugated
Application:	ELISA, Immunohistochemistry (IHC)

## Product Details

Immunogen:	Recombinant Human Germinal center-associated signaling and motility protein (1-178AA)
Isotype:	IgG
Cross-Reactivity:	Human
Purification:	>95%, Protein G purified

## Target Details

Target:	GCET2
Alternative Name:	GCSAM ( <a href="#">GCET2 Products</a> )
Background:	Background: Involved in the negative regulation of lymphocyte motility. It mediates the migration-inhibitory effects of IL6. Serves as a positive regulator of the RhoA signaling pathway.

## Target Details

Enhancement of RhoA activation results in inhibition of lymphocyte and lymphoma cell motility by activation of its downstream effector ROCK. Is a regulator of B-cell receptor signaling, that acts through SYK kinase activation.

Aliases: GCAT2 antibody, Gcet antibody, GCET2 germinal center expressed transcript 2 antibody, GCET2 germinal centre expressed transcript 2 antibody, Gcsam antibody, GCSAM\_HUMAN antibody, Germinal center associated lymphoma antibody, Germinal center associated lymphoma protein antibody, Germinal center B cell associated protein 2 antibody, Germinal center B-cell-expressed transcript 2 protein antibody, Germinal center expressed transcript 2 antibody, Germinal center-associated lymphoma protein antibody, Germinal center-associated signaling and motility protein antibody, Germinal centre associated lymphoma antibody, Germinal centre associated lymphoma protein antibody, Germinal centre B cell associated protein 2 antibody, Germinal centre expressed transcript 2 antibody, hGAL antibody, M17 antibody, M17 L antibody

UniProt: [Q8N6F7](#)

## Application Details

Application Notes: Recommended dilution: IHC:1:20-1:200,

Restrictions: For Research Use only

## Handling

Format: Liquid

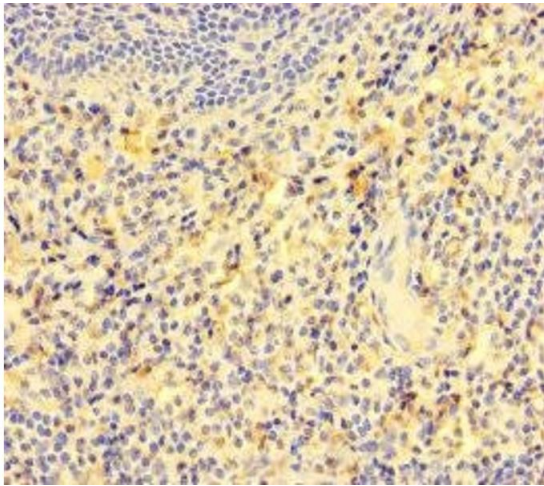
Buffer: Preservative: 0.03 % Proclin 300  
Constituents: 50 % Glycerol, 0.01M PBS, PH 7.4

Preservative: ProClin

Precaution of Use: This product contains ProClin: a POISONOUS AND HAZARDOUS SUBSTANCE which should be handled by trained staff only.

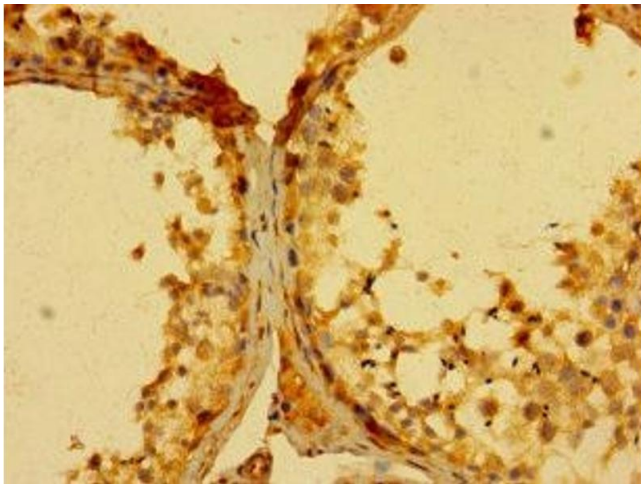
Storage: -20 °C,-80 °C

Storage Comment: Upon receipt, store at -20°C or -80°C. Avoid repeated freeze.



#### Immunohistochemistry

**Image 1.** Immunohistochemistry of paraffin-embedded human tonsil tissue using ABIN7153835 at dilution of 1:100



#### Immunohistochemistry

**Image 2.** Immunohistochemistry of paraffin-embedded human testis tissue using ABIN7153835 at dilution of 1:100