

Datasheet for ABIN7153843
anti-GANP antibody (AA 292-435)[Go to Product page](#)

2 Images

Overview

Quantity:	100 µg
Target:	GANP (MCM3AP)
Binding Specificity:	AA 292-435
Reactivity:	Human
Host:	Rabbit
Clonality:	Polyclonal
Conjugate:	This GANP antibody is un-conjugated
Application:	ELISA, Immunohistochemistry (IHC), Immunofluorescence (IF)

Product Details

Immunogen:	Recombinant Human Germinal-center associated nuclear protein (292-435AA)
Isotype:	IgG
Cross-Reactivity:	Human
Purification:	>95%, Protein G purified

Target Details

Target:	GANP (MCM3AP)
Alternative Name:	MCM3AP (MCM3AP Products)
Background:	Background: Isoform GANP: Essential for the generation of high-affinity B-cells against T-cell-dependent antigens by affecting somatic hypermutation at the IgV-regions. May have

Target Details

stimulation-dependent DNA primase activity that would generate extra RNA primers in very rapidly proliferating cells and would support clonal expansion of differentiating B-cells (By similarity). Involved in the nuclear export of poly(A)-containing mRNAs by acting as a scaffold for the TREX-2 complex. The TREX-2 complex functions in docking export-competent ribonucleoprotein particles (mRNPs) to the nuclear entrance of the nuclear pore complex (nuclear basket). TREX-2 participates in mRNA export and accurate chromatin positioning in the nucleus by tethering genes to the nuclear periphery.

Aliases: 80 kDa MCM3 associated protein antibody, 80 kDa MCM3-associated protein antibody, FLJ44336 antibody, FLJ45306 antibody, Germinal center associated nuclear protein antibody, KIAA0572 antibody, MAP80 antibody, MCM3 import protein antibody, MCM3 minichromosome maintenance deficient 3 associated protein antibody, MCM3A antibody, MCM3A_HUMAN antibody, Mcm3ap antibody, Minichromosome maintenance complex component 3 associated protein antibody, Minichromosome maintenance deficient 3 associated protein antibody, Minichromosome maintenance protein 3 associated protein antibody, Protein GANP antibody, SAC3 antibody

UniProt: [O60318](#)

Pathways: [Protein targeting to Nucleus](#)

Application Details

Application Notes: Recommended dilution: IHC:1:20-1:200, IF:1:50-1:200,

Restrictions: For Research Use only

Handling

Format: Liquid

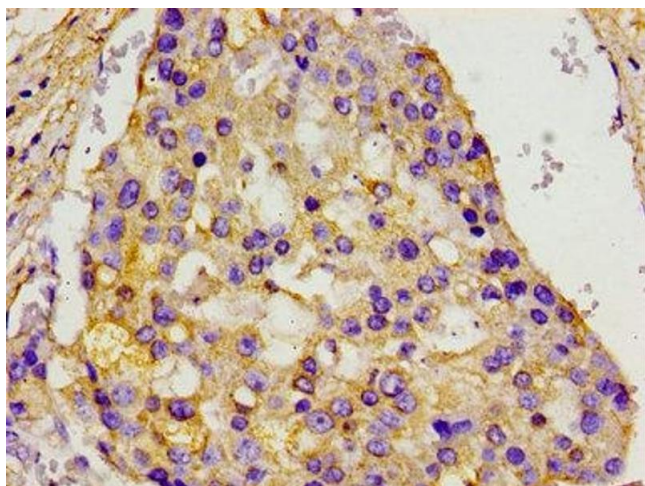
Buffer: Preservative: 0.03 % Proclin 300
Constituents: 50 % Glycerol, 0.01M PBS, pH 7.4

Preservative: ProClin

Precaution of Use: This product contains ProClin: a POISONOUS AND HAZARDOUS SUBSTANCE which should be handled by trained staff only.

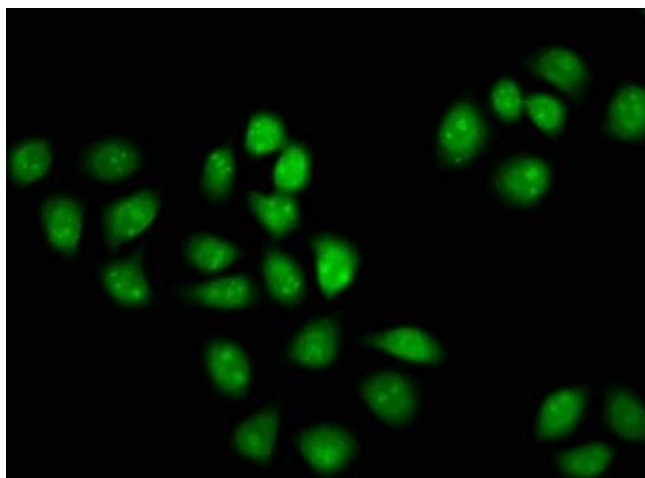
Storage: -20 °C,-80 °C

Storage Comment: Upon receipt, store at -20°C or -80°C. Avoid repeated freeze.



Immunohistochemistry

Image 1. Immunohistochemistry of paraffin-embedded human breast cancer using ABIN7153843 at dilution of 1:100



Immunofluorescence

Image 2. Immunofluorescence staining of HeLa cells with ABIN7153843 at 1:133, counter-stained with DAPI. The cells were fixed in 4% formaldehyde, permeabilized using 0.2% Triton X-100 and blocked in 10% normal Goat Serum. The cells were then incubated with the antibody overnight at 4°C. The secondary antibody was Alexa Fluor 488-conjugated AffiniPure Goat Anti-Rabbit IgG(H+L).