

Datasheet for ABIN7153857
anti-GLIPR1 antibody (AA 22-232)[Go to Product page](#)

3 Images

Overview

Quantity:	100 µg
Target:	GLIPR1
Binding Specificity:	AA 22-232
Reactivity:	Human
Host:	Rabbit
Clonality:	Polyclonal
Conjugate:	This GLIPR1 antibody is un-conjugated
Application:	ELISA, Immunohistochemistry (IHC), Immunofluorescence (IF)

Product Details

Immunogen:	Recombinant Human Glioma pathogenesis-related protein 1 protein (22-232AA)
Isotype:	IgG
Cross-Reactivity:	Human
Purification:	>95%, Protein G purified

Target Details

Target:	GLIPR1
Alternative Name:	GLIPR1 (GLIPR1 Products)
Background:	Background: Glioma pathogenesis-related protein 1 (GLIPR1) regulated numerous apoptotic, cell cycle, and spindle/centrosome assembly-related genes, including AURKA and TPX2, and

Target Details

induced apoptosis and/or mitotic catastrophe (MC) in prostate cancer (PCa) cells, including p53-mutated/deleted, androgen-insensitive metastatic PCa cells.

Aliases: CRISP 7 antibody, CRISP7 antibody, GLI pathogenesis related 1 antibody, GLI pathogenesis-related 1 (glioma) antibody, Glioma pathogenesis related protein 1 antibody, Glioma pathogenesis-related protein 1 antibody, GLIP1_HUMAN antibody, GliPR 1 antibody, GLIPR antibody, GLIPR1 antibody, Protein RTVP-1 antibody, RELATED TO TESTIS SPECIFIC, VESPID, AND PATHOGENESIS PROTEINS 1 antibody, RTVP 1 antibody, RTVP1 antibody, Testes specific vespid and pathogenesis protein 1 antibody, testes-specific vespid and pathogenesis protein 1 antibody

UniProt: [P48060](#)

Pathways: [Regulation of Lipid Metabolism by PPARalpha](#)

Application Details

Application Notes: Recommended dilution: IHC:1:20-1:200, IF:1:50-1:200,

Restrictions: For Research Use only

Handling

Format: Liquid

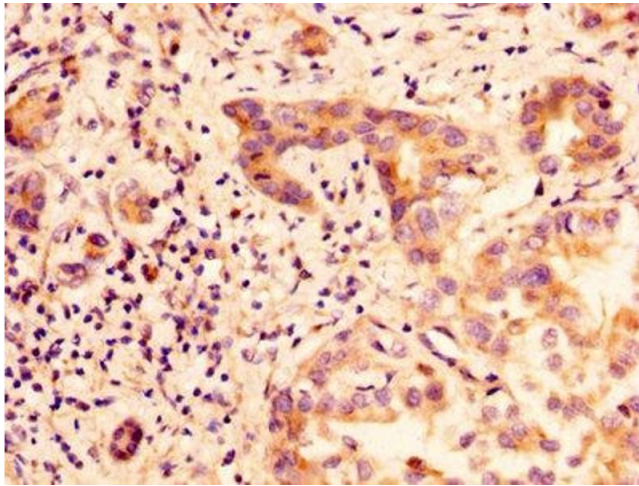
Buffer: Preservative: 0.03 % Proclin 300
Constituents: 50 % Glycerol, 0.01M PBS, PH 7.4

Preservative: ProClin

Precaution of Use: This product contains ProClin: a POISONOUS AND HAZARDOUS SUBSTANCE which should be handled by trained staff only.

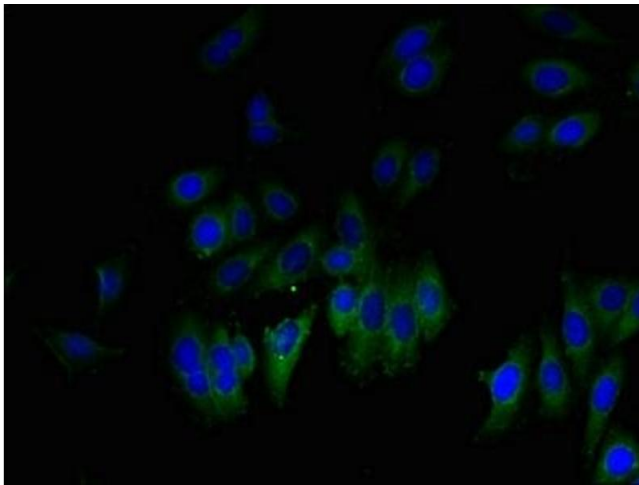
Storage: -20 °C,-80 °C

Storage Comment: Upon receipt, store at -20°C or -80°C. Avoid repeated freeze.



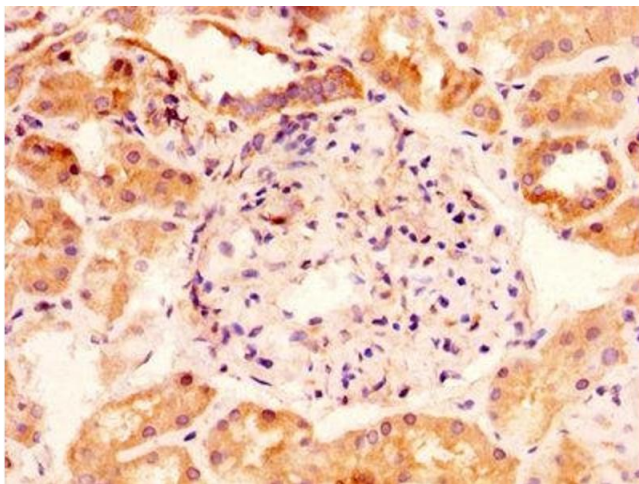
Immunohistochemistry

Image 1. IHC image of ABIN7153857 diluted at 1:100 and staining in paraffin-embedded human liver cancer performed on a Leica Bond™ system. After dewaxing and hydration, antigen retrieval was mediated by high pressure in a citrate buffer (pH 6.0). Section was blocked with 10% normal goat serum 30min at RT. Then primary antibody (1% BSA) was incubated at 4°C overnight. The primary is detected by a biotinylated secondary antibody and visualized using an HRP conjugated SP system.



Immunofluorescence

Image 2. Immunofluorescent analysis of HepG2 cells using ABIN7153857 at dilution of 1:100 and Alexa Fluor 488-conjugated AffiniPure Goat Anti-Rabbit IgG(H+L)



Immunohistochemistry

Image 3. IHC image of ABIN7153857 diluted at 1:100 and staining in paraffin-embedded human kidney tissue performed on a Leica Bond™ system. After dewaxing and hydration, antigen retrieval was mediated by high pressure in a citrate buffer (pH 6.0). Section was blocked with 10% normal goat serum 30min at RT. Then primary antibody (1% BSA) was incubated at 4°C overnight. The primary is detected by a biotinylated secondary antibody and visualized using an HRP conjugated SP system.