



[Go to Product page](#)

Datasheet for ABIN7153890
anti-GCK antibody (AA 1-300)

3 Images

Overview

Quantity:	100 µL
Target:	GCK
Binding Specificity:	AA 1-300
Reactivity:	Human
Host:	Rabbit
Clonality:	Polyclonal
Conjugate:	This GCK antibody is un-conjugated
Application:	Western Blotting (WB), ELISA, Immunohistochemistry (IHC)

Product Details

Immunogen:	Recombinant Human Glucokinase protein (1-300AA)
Isotype:	IgG
Cross-Reactivity:	Human
Purification:	Antigen Affinity Purified

Target Details

Target:	GCK
Alternative Name:	GCK (GCK Products)
Background:	Background: Catalyzes the initial step in utilization of glucose by the beta-cell and liver at physiological glucose concentration. Glucokinase has a high Km for glucose, and so it is

Target Details

effective only when glucose is abundant. The role of GCK is to provide G6P for the synthesis of glycogen. Pancreatic glucokinase plays an important role in modulating insulin secretion. Hepatic glucokinase helps to facilitate the uptake and conversion of glucose by acting as an insulin-sensitive determinant of hepatic glucose usage.

Aliases: ATP:D-hexose 6-phosphotransferase antibody, FGQTL3 antibody, GCK antibody, GK antibody, GLK antibody, Glucokinase antibody, Hexokinase D pancreatic isozyme antibody, Hexokinase type IV antibody, Hexokinase-4 antibody, Hexokinase-D antibody, HHF3 antibody, HK IV antibody, HK4 antibody, HKIV antibody, HXK4_HUMAN antibody, HXKP antibody, LGLK antibody, MODY2 antibody

UniProt: [P35557](#)

Pathways: [MAPK Signaling](#), [Positive Regulation of Peptide Hormone Secretion](#), [Carbohydrate Homeostasis](#), [Cellular Glucan Metabolic Process](#), [Regulation of Carbohydrate Metabolic Process](#)

Application Details

Application Notes: Recommended dilution: WB:1:200-1:1000, IHC:1:20-1:200,

Restrictions: For Research Use only

Handling

Format: Liquid

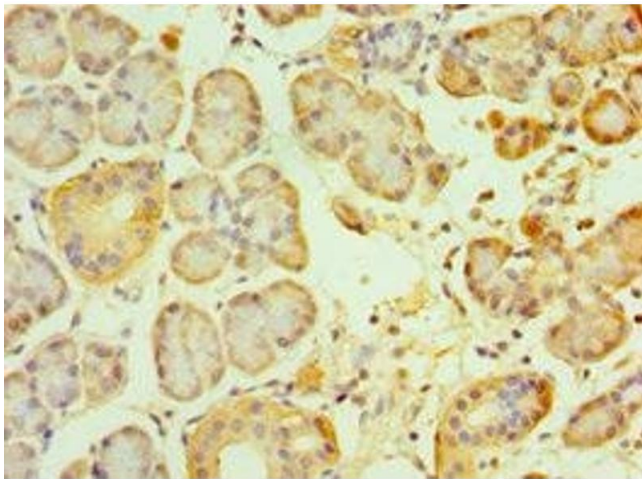
Buffer: PBS with 0.02 % sodium azide, 50 % glycerol, pH 7.3.

Preservative: Sodium azide

Precaution of Use: This product contains Sodium azide: a POISONOUS AND HAZARDOUS SUBSTANCE which should be handled by trained staff only.

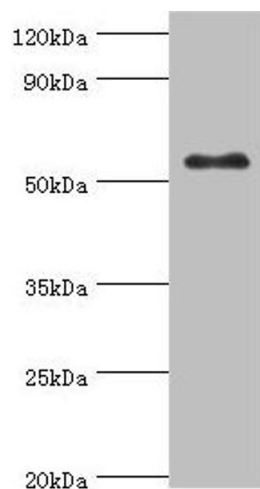
Storage: -20 °C,-80 °C

Storage Comment: Upon receipt, store at -20°C or -80°C. Avoid repeated freeze.



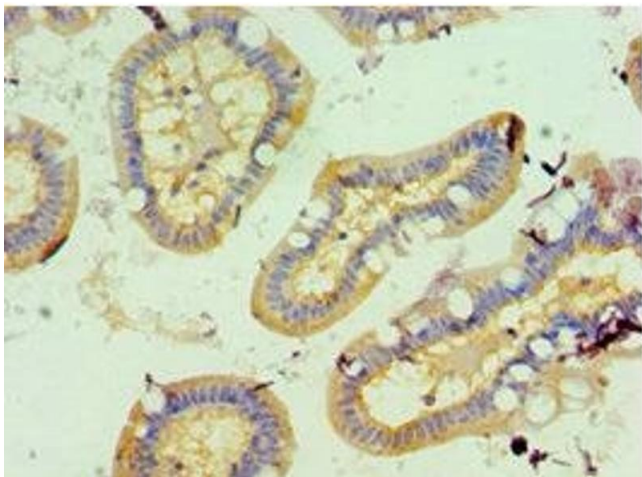
Immunohistochemistry

Image 1. Immunohistochemistry of paraffin-embedded human pancreatic tissue using ABIN7153890 at dilution of 1:100



Western Blotting

Image 2. Western blot All lanes: Glucokinase antibody at 8 μ g/mL + HepG2 whole cell lysate Secondary Goat polyclonal to rabbit IgG at 1/10000 dilution Predicted band size: 52 kDa Observed band size: 52 kDa



Immunohistochemistry

Image 3. Immunohistochemistry of paraffin-embedded human small intestine tissue using ABIN7153890 at dilution of 1:100