

Datasheet for ABIN7153892
anti-GCKR antibody (AA 1-625)[Go to Product page](#)

2 Images

Overview

Quantity:	100 µg
Target:	GCKR
Binding Specificity:	AA 1-625
Reactivity:	Human
Host:	Rabbit
Clonality:	Polyclonal
Conjugate:	This GCKR antibody is un-conjugated
Application:	ELISA, Immunohistochemistry (IHC)

Product Details

Immunogen:	Recombinant Human Glucokinase regulatory protein (1-625AA)
Isotype:	IgG
Cross-Reactivity:	Human
Purification:	>95%, Protein G purified

Target Details

Target:	GCKR
Alternative Name:	GCKR (GCKR Products)
Background:	Background: Inhibits glucokinase (GCK) by forming an inactive complex with this enzyme. The affinity of GCKR for GCK is modulated by fructose metabolites: GCKR with bound fructose 6-

Target Details

phosphate has increased affinity for GCK, while GCKR with bound fructose 1-phosphate has strongly decreased affinity for GCK and does not inhibit GCK activity.

Aliases: FGQTL5 antibody, GCK antibody, GCKR antibody, GCKR_HUMAN antibody, GKRP antibody, GLRE antibody, glucokinase (hexokinase 4) regulator antibody, Glucokinase antibody, Glucokinase regulator antibody, Glucokinase regulatory protein antibody, Hexokinase 4 regulator antibody, Hexokinase type IV antibody, Hexokinase-4 antibody, Hexokinase-D antibody, HK IV antibody, HK4 antibody, OTTHUMP00000158533 antibody

UniProt: [Q14397](#)

Pathways: [Carbohydrate Homeostasis](#), [Regulation of Carbohydrate Metabolic Process](#), [Protein targeting to Nucleus](#)

Application Details

Application Notes: Recommended dilution: IHC:1:20-1:200,

Restrictions: For Research Use only

Handling

Format: Liquid

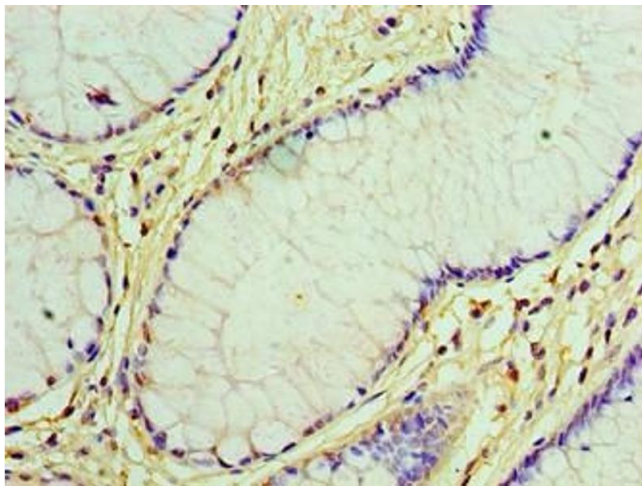
Buffer: Preservative: 0.03 % Proclin 300
Constituents: 50 % Glycerol, 0.01M PBS, PH 7.4

Preservative: ProClin

Precaution of Use: This product contains ProClin: a POISONOUS AND HAZARDOUS SUBSTANCE which should be handled by trained staff only.

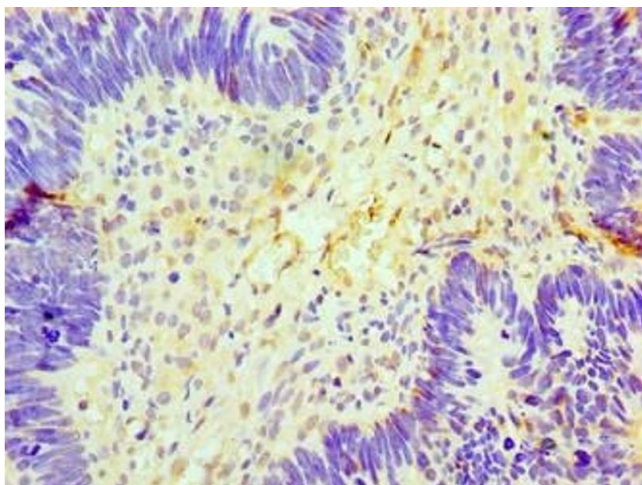
Storage: -20 °C, -80 °C

Storage Comment: Upon receipt, store at -20°C or -80°C. Avoid repeated freeze.



Immunohistochemistry

Image 1. Immunohistochemistry of paraffin-embedded human colon cancer using ABIN7153892 at dilution of 1:100



Immunohistochemistry

Image 2. Immunohistochemistry of paraffin-embedded human ovarian cancer using ABIN7153892 at dilution of 1:100